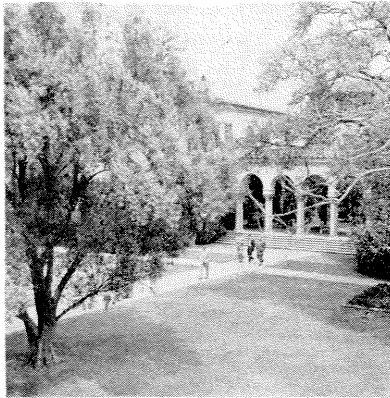


ENGINEERING AND SCIENCE

IN THIS ISSUE



On our cover this month is a rare view of the Olive Walk, taken from the upper reaches of the student houses, looking toward the Athenaeum. What else is rare about this view is that we're running it on our cover at all. Unlike most college publications, ours usually bypasses campus views in favor of scientists and engineers as cover subjects. Here, then, to show what a well-rounded publication this is, is a campus view—and a reminder that we still have a full complement of natural beauty in these parts.

President DuBridge's article on page 13 of this issue, "Things We Do Not Know," has been adapted from a talk given on February 10 to the Los Angeles Rotary Club.

Margaret and Geoffrey Burbidge, who wrote "Cosmical Alchemy" on page 17, are at Caltech this year—she as a research fellow at the Kellogg Radiation Laboratory, and he as a Carnegie Fellow of the Mount Wilson and Palomar Observatories.

An observational astronomer, Mrs. Burbidge got her PhD from the University of London in 1943, has served as assistant director and acting director of the Observatory there. A theoretical astrophysicist, Dr. Burbidge got his PhD in applied mathematics from the University of London in 1951. The Burbidges began a collaboration with Dr. W. A. Fowler last year (when he was a Fulbright professor at Cambridge University) on research which is now continuing at Caltech—and which the Burbidges describe in their article.

PICTURE CREDITS

p 18, 19, 21, 22 Walter W. Girdner
p 25 Stuart Bowen '56
p 26 Ben Olender—
Pasadena Star-News

MARCH, 1956

VOLUME XIX

NUMBER 6

PUBLISHED AT THE CALIFORNIA INSTITUTE OF TECHNOLOGY

CONTENTS

In This Issue	3
Books	6
Things We Do Not Know	13
<i>They are likely to be the most important things about a university. Some comments about education and research at Caltech</i> by L. A. DuBridge	
Cosmical Alchemy	17
<i>Combined research from four fields of science—physics, astrophysics, astronomy, geochemistry—leads to a new theory of the synthesis of elements in stars.</i> by Margaret and Geoffrey Burbidge	
Faculty Portrait	22
<i>R. R. Martel, professor of structural engineering</i>	
Student Life	25
<i>1956 student elections. A pictorial record</i>	
The Month at Caltech	26
Alumni News	36
Personals	40
Alumni Seminar Day Program	54

STAFF

Publisher.....Richard C. Armstrong '28
Editor and Business Manager.....Edward Hutchings, Jr.
Staff Photographer.....Stuart Bowen '56
Editorial Consultant.....George R. MacMinn
Professor of English, Emeritus

Published monthly, October through June, at the California Institute of Technology, 1201 East California St., Pasadena 4, Calif., for the undergraduates, graduate students and alumni of the Institute. Annual subscription \$3.50 domestic, \$4.50 foreign, single copies 50 cents. Entered as second class matter at the Post Office at Pasadena, California, on September 6, 1939, under act of March 3, 1879. All Publisher's Rights Reserved. Reproduction of material contained herein forbidden without written authorization. Manuscripts and all other editorial correspondence should be addressed to: The Editor, *Engineering and Science*, California Institute of Technology.