

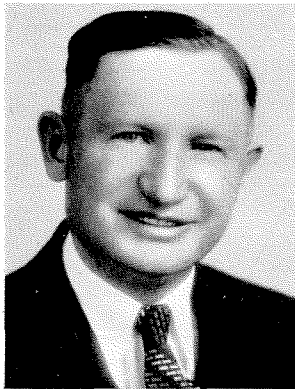
ALUMNI YOU SHOULD KNOW

UNIVERSITY E. E. DIRECTOR

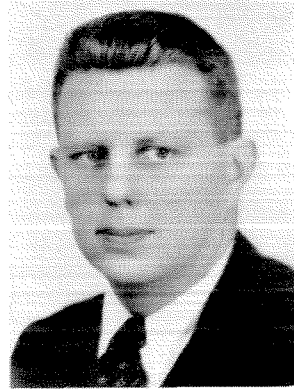
Since entering the Institute in 1922 as winner of a Westinghouse war memorial scholarship, William A. Lewis, Jr., has been known for top-flight talent in the field of electrical engineering. Winner of prizes, participant in extra-curricular activities and outstanding student, he completed work for his B.S. degree (with honor) in 1926; M.S. (with honor) in 1927; and Ph.D. (summa cum laude) in 1929. In addition to his college work at the Institute, Bill rendered valuable service in planning the control system for the Guggenheim wind tunnel equipment and assisting in plans for electrical installations in the Institute buildings.

Entering the employ of Westinghouse Electric and Manufacturing Company, Dr. Lewis soon became an authority on technical electrical problems. During a ten-year period he served in several departments and became a Westinghouse lecturer in electrical engineering at the University of Pittsburgh.

Recognizing his excellent qualifications, the board of trustees of Cornell University recently chose Dr. Lewis to serve as director in the School of Electrical Engineering in the College of Engineering. He received word of his appointment on his thirty-fifth birthday and is thus one of the youngest men ever selected for high administrative office at Cornell. He took office on February first.



DONALD R. WARREN



WILLIAM A. LEWIS, JR.

HIGHWAY BRIDGE ENGINEER

Donald R. Warren, better known as "Don" Warren, is an outstanding example of an engineer who is always studying and keeping abreast of the times. With years of experience in responsible charge of civil engineering projects, but never having had the good fortune to complete work for his degree he took time to study, received his B.S. in 1938.

Because Don topped the list on the civil service examination for Senior Field Engineer on the San Francisco-Oakland Bay Bridge several years ago, he was put in charge of all construction surveys, landing of caissons in tidal water (often a mile off shore), alignment of suspension bridge cables, and the linking together of the many units which form the \$77,000,000 double deck bridge across San Francisco Bay.

As reward for the work done on this famous bridge, Chief Engineer C. H. Purcell last year placed Don in charge of all state bridge construction in Southern California. All bridges, grade separations and structures on 6,000 miles of state highways are under his supervision.

Some of the other engineering projects on which Don has served in a responsible capacity are: The deep water piers for the San Mateo-Hayward Bridge across San Francisco Bay, the development of the theory of incursion and control of salinity in the Sacramento-San Joaquin Delta, the construction of Big Meadows Dam and many other projects.

Don takes an active interest in the activities of the American Society of Civil Engineers and the Structural Engineers Association. Although a busy man, Don will always greet with a smile any reference to his alma mater, the California Institute of Technology.