



On January 11, morning after the big "blizzard," Caltech's campus and mountains looked like a New England winter scene.

## THE BIG SNOW

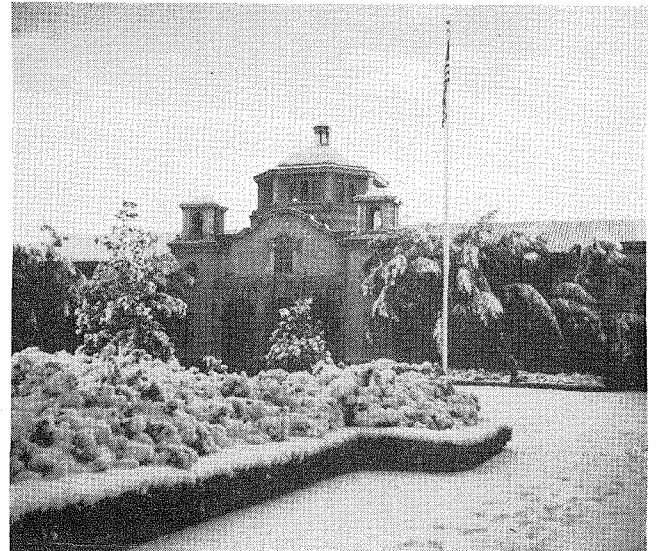
*A pictorial record of some very unusual weather*

Pictures by Hugh Stoddart

Inexperienced sculptors made a limp, short-lived snowman.



Throop Hall looked wintry at 10 a.m.; snow melted by noon.





Student houses got their share of Pasadena's four-inch fall.



Shovelling out wasn't very hard; but, still, it was necessary.

Olive trees between Throop and Athenaeum had an unfamiliar look. So did one student who appeared in a raccoon coat.

