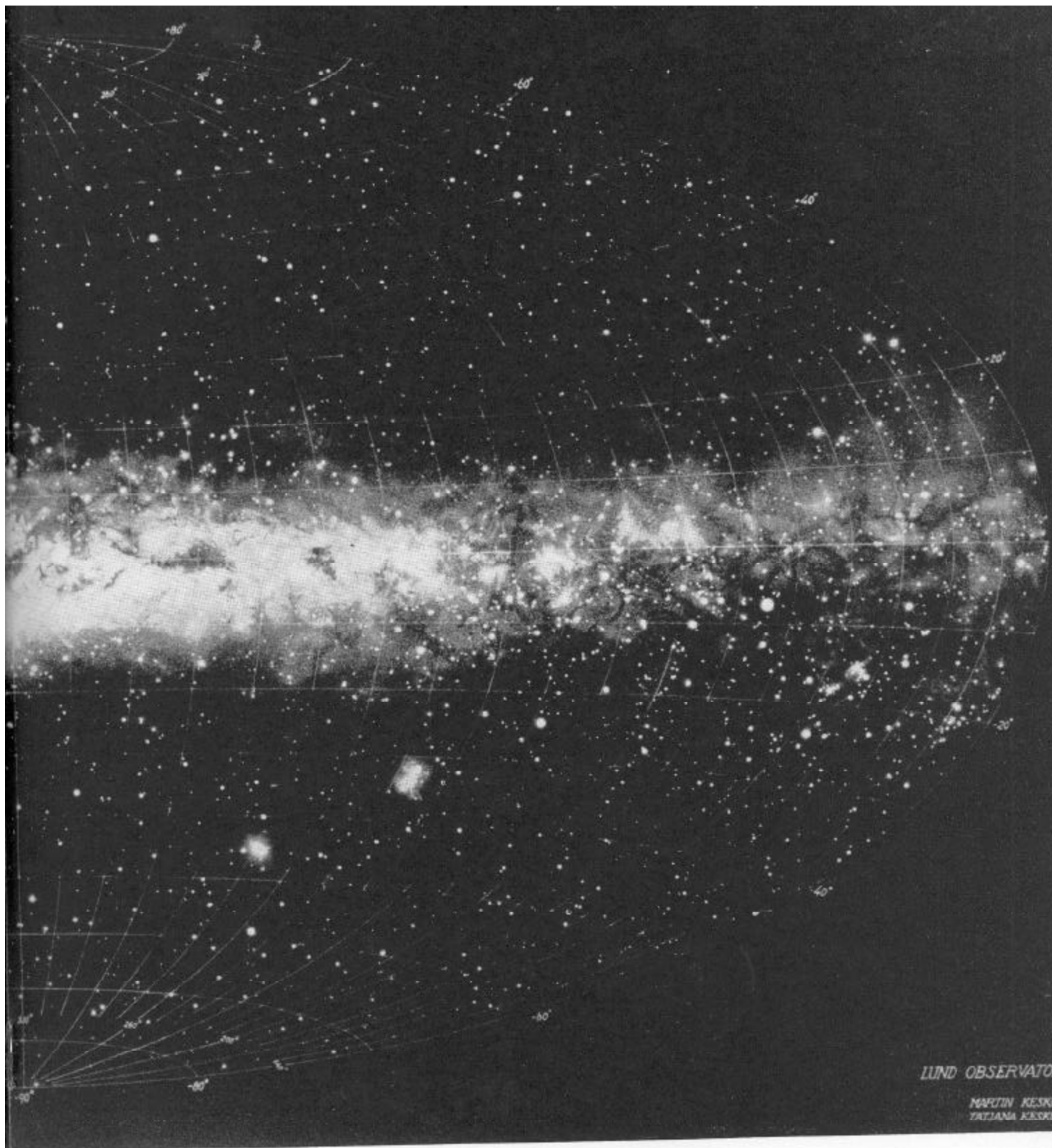


THE MILKY WAY

THIS PICTURE, published here for the first time, is one of the finest known reproductions of our Galaxy, the Milky Way. It is not a photograph.

Though astronomers have photographed over a thousand million galaxies, the Milky Way Galaxy cannot be seen or photographed in its entirety because a great



deal of it lies hidden from us by gases, dust and stars.

This picture is a painting, made under the direction of Dr. Knute Lundmark, former director of the Lund Observatory in Sweden, who presented a reproduction to the Mount Wilson and Palomar Observatories.

Working on an eight-foot screen, the artists painted

tiny white dots on a black surface—grouping the dots so carefully that the actual luminosity of each is correct according to current magnitudes.

The Milky Way measures about 100,000 light years in diameter; our whole solar system is a tiny dot about two-thirds of the way from the center of the Galaxy.