

# ALUMNI NEWS

## New Board Members

■ IN ACCORDANCE WITH Section 3.04 of the By-Laws of the Association, the Directors met as a nominating committee on February 9, 1950. Five vacancies will occur on the Board at the end of the current fiscal year, one vacancy to be filled from the present Board and four members to be elected by the Association. The present members of the Board and the years in which their terms of office expire, follow:

R. C. Armstrong '28 1951	J. W. Lewis, Jr. '41 1950
N. A. D'Arcy '28 1950	R. F. Mettler '44 1950
R. J. Hare '21 1951	R. P. Sharp '34 1951
R. M. Lehman '31 1950	A. C. Tutschulte '31 1951
G. K. Whitworth '20 1950	

The four members of the Association nominated by the Directors are:

T. C. Coleman '26	D. C. Tillman '45
J. E. Sherborne '34	W. O. Wetmore '37

In accordance with Section 3.04 of the By-Laws of the Association: "... Additional nominations may be made by petitions signed by at least ten (10) regular members in good standing, provided that the petitions are received by the Secretary not later than April fifteenth."

Statements about the nominees of the Directors are presented below.

—D. S. Clark, Secretary



■ THEODORE C. COLEMAN received his B.S. in Engineering and Economics in 1926. He participated in various student activities, and received an Honor Key during his junior and senior years. After three years with the Los Angeles County Road Department as a Junior Civil Engineer he entered the investment banking business as a salesman for Blyth & Co. in Pasadena. In 1930 he became manager in the Pasadena office of Banks, Huntley & Co., and was made a partner and sales manager for this firm in 1936.

Prior to the outbreak of World War II he was one of the organizers of Northrop Aircraft, Inc., joining that company as Secretary in 1940. He was made Vice-President and director in 1941, serving in this capacity until the end of the war.

At the end of 1945 he took his family to Sao Paulo, Brazil, where he engaged in his own business as distributor for a number of U. S. airplane and other manufacturers. At the end of 1947 he returned to California and served for a brief time as Assistant Treasurer of the Standard Oil Company of California in San Francisco.

He has now returned to Southern California and re-entered the investment securities business as manager of the Pasadena office for Hill Richards & Co. He is a member of Pi Kappa Delta, the Gnome Club, Stock Exchange Club, and Valley Hunt Club in Pasadena. He served as a director of the Alumni Association in the early 1930's.



■ JOHN E. SHERBORNE received his B.S. in Science in 1934. He was President of the Chem Club, member of the Drama and Press Clubs and Associate Editor of the *California Tech*. From graduation until 1936 he worked at Tech as API research fellow with Sage and Lacey. In July, 1936, he joined the staff of the Union Oil Company of California as apprentice engineer. He continued to serve this company in various production engineering capacities until 1940. From 1940 until 1944 he was employed by the same company as a process engineer in charge of those phases of process engineering having to do with oil and water gathering, handling, dehydration, water disposal and water treatment. In 1945 he was made Division Production Engineer; in January of 1948 he was promoted to Chief Production Research Engineer, and in August of 1948 he was made Chief Production Engineer. In October of 1949 he was transferred to the Research Department as Assistant to the Vice President.

From 1940 until 1947 he also served as a member of the staff of the Department of Petroleum Engineering of the University of Southern California, during which

**SAVE THE DAY**

---

**THE ANNUAL MEETING**

of the

**ALUMNI ASSOCIATION**

will be held on

**June 7**

---

**COMMENCEMENT WEEK REUNIONS**

**JUNE 7**

for the classes of 1915, 1920, 1925, 1930  
1935, 1940, and 1945

# ALUMNI SEMINAR DAY

## APRIL 15th

### THE PROGRAM

#### MEAD

The Psychology of Leadership

#### GREENSTEIN

Physical Properties of Interstellar Space

#### SWEEZY

Is the Cold War Ruining Us?

#### ENGEL

A Story from the Oldest Rocks in the World

#### WENT

The Earhart Plant Research Laboratory

#### PANEL DISCUSSION

Who Should Go to Caltech?

■ Prof. Hallett Smith will lead a discussion of the Humanities at Tech. An opportunity to meet the new Chairman of Humanities.

■ To acquaint the Alumni with the "Post-War" Campus, all the new labs and facilities will be open.

### EVENING BANQUET

#### UNTEREINER

What's Around the Corner

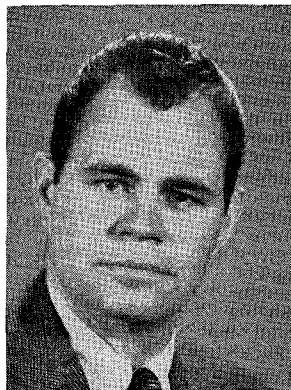
**DON'T FORGET . . . APRIL 15TH**

Registration 8:30 A.M.

time he conducted evening classes in various phases of petroleum production and reservoir engineering.

He has taken an active part in A.I.M.E. activities since 1938, and has served on both the Membership and Engineering Research committees—as chairman of the latter committee from 1946 through 1948. From 1947 to the present time he has been a member of the Executive Committee of the Petroleum Branch and, in 1948, he was Vice-Chairman of the Petroleum Branch. In 1949 he was also chairman of the Production Technology Committee. He is currently chairman of the Petroleum Branch.

He has been active in A.P.I. affairs for a number of years, during which time he has served as chairman of numerous district and national committees. He is also a member of Sigma Xi, A.A.P.G. and A.I.Ch.E.

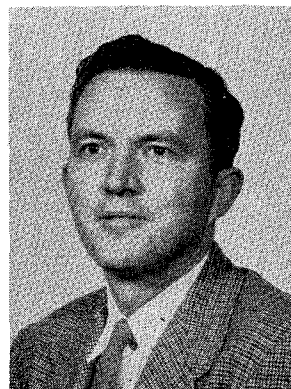


■ DONALD C. TILLMAN received his B.S. in 1945 and his M.S. in 1947 in Civil Engineering. He was a three-year letterman. He was a co-captain of the track team and a center on the football team (his name was placed on the Wheaton Football Trophy in 1944). He served on the Student Body Board of Directors as Second Representative-at-Large, Athletic Manager, and President. He was also

Junior Class President, a member of the Board of Control, the Beavers, Tau Beta Pi, and holder of the Honor Key.

As an Ensign in the United States Navy, following graduation, he served as an instructor in the Civil Engineering Corps Officers' School at Davisville, Rhode Island. After discharge and working for private engineers in the east, he returned to a teaching assistantship and graduate year at Caltech.

In 1947 he worked for a contractor as Job Engineer on the Pacific Coast Highway realignment and construction at Malibu. He next went to work for the Street and Parkway Design Division of the City of Los Angeles and he has been engaged for the past two years in the design of freeways.



■ WILLIAM O. WETMORE received his B.S. in Engineering in 1937, his M.S. in Mechanical Engineering in 1939, and his Ph.D. in 1941. As an undergraduate he was Treasurer and Vice-President of Dabney House, Vice-President of the Varsity Club, athletic manager of the student body, captain of the football team, a member of the Beavers, and holder of the Honor Key. For two years, in 1938 and 1939,

he was Resident Associate of Ricketts House.

From 1941 to 1945 he served as Chief Metallurgist for the Permanente Metal Corp., near San Jose, Calif. During this time he also taught war training courses in

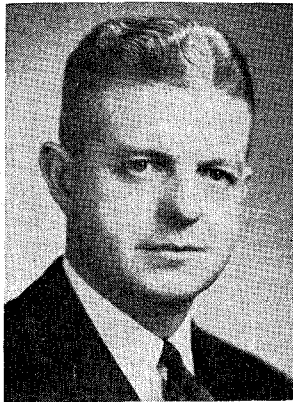
Metallurgy at Stanford University and the University of Santa Clara.

From 1945 to 1947 he worked on production problems related to the fabrication of metal parts for the Kinney Aluminum Co. in Los Angeles, and the General Tire and Rubber Co. of California in Pasadena.

Since 1947 he has headed the Metallurgy Branch of the U. S. Naval Ordnance Test Station in Pasadena.

He is a member of Sigma Xi and various metallurgical societies, and during the current (1949-1950) year he is serving as Chairman of the Social Committee for the Alumni Association.

## Vesper Trophy



■ THE INSTITUTE'S Athletic Department was happily surprised recently to receive a new perpetual trophy from Howard Vesper '22, to be awarded at the close of each basketball season to that member of the squad most qualified from the standpoint of sportsmanship, improvement, moral influence and scholarship. The first winner will be announced this month, and his name is to be engraved on the trophy, which is designed to accom-

modate such listings for a number of years.

In making the award, Howard Vesper, who played basketball on Tech teams from 1918 to 1922, says, "It is my sincere hope that the establishment of this award will in some measure be effective in stimulating greater interest and enthusiasm in the sport at the Institute."

## Chapter Notes

■ THE ALUMNI CLUB of Chicago held its winter meeting on January 26 at the Chicago Engineers Club. Special guest and speaker of the evening was Prof. Gilbert D. McCann, who gave an illustrated talk on the Analog Computer. The club was also happy to see Prof. F. C. Lindvall, who was in Chicago at the time.

■ ALUMNI OF the San Francisco Chapter, their wives and friends, gathered for a social evening at the Twentieth Century Club in Berkeley on Friday, January 20. After a pot luck dinner, new members were introduced—alumni of the classes of '48 and '49. (After looking at the graduation dates on some of the name tags around him, W. N. Jarmie '48 decided he would feel more at home if he wrote down his birth date, which he did—1928.) Besides Jarmie, Byron Youtz '48 and Kent Terwilliger '49 were welcomed to the chapter. The group then adjourned to the second floor of the club house for dancing—and some spirited group singing—until midnight.

Alumni attending the dinner dance included: E. E. Dorresten '22, L. H. Erb '22, H. G. Vesper '22, M. W. Edwards '26, M. T. Jones '26, D. J. Pompeo '26, H. E. Larson '27, A. Hazard '30, R. Stirton '30, J. S. Detweiler '31, E. S. Hill '31, C. K. Lewis '31, G. E. Liedholm '31, J. F. McGarry '31, E. C. Keachie '32, R. W. Haskins '34, J. J. Halloran '35, R. G. Heitz '36, T. Vermeulen '36, A. L. Grossberg '42, L. J. True '42, J. W. Hadley '45, W. N. Jarmie '48, B. Youtz, '48, and K. Terwilliger '49.

## SIT BACK AND RELAX



### LET CALMEC MANUFACTURING COMPANY WORRY ABOUT YOUR METAL PARTS AND PRODUCTS

Here you get excellent service, as well as the best prices. With our established credit and banking facilities our inventory consists of any and all metal sheets, rods, forgings, or castings available on the coast and these in all alloys. We have the most modern facilities and most complete plant to give you the maximum of service, whether it is a small part, a large part, or a product from your ideas to the shipped article direct to your customers, under your name, from our plant.

#### Our Facilities Also Include—

1. Most modern toolrooms, and most qualified toolmakers under the immediate direction of J. F. McIntyre, a partner.
2. Complete automatic screw machine department.
3. A Tocco induction heat treater (largest on coast).
4. Three Potter Johnson semi automatics.
5. Twelve Warner Swasey turrets—from 9 $\frac{7}{8}$ " down to 1 $\frac{1}{2}$ ".
6. Complete grinding department.
7. Complete milling equipment — some semi automatic.
8. Engine lathes — long bed.
9. Assembly or sub-assembly work according to your specifications.
10. Personnel, consisting of men we had before the war with a few exceptions.

Management, Sales, and Supervision personnel are young family men of vision and ambition, raised in the plant except for their college years. Once a customer does business with our organization—consisting of the most qualified personnel—of the finest skills and ingenuities in our field—they continue to do business with us, because they find that we do better work of real "quality" production.

### CALMEC MANUFACTURING CO.

Robert A. McIntyre, M.S. '38      Logan 5-5329  
5825 District Blvd.      Los Angeles 22, Calif.