

# ALUMNI NEWS

## New Board Members

THE BOARD OF DIRECTORS of the Alumni Association met as a nominating committee on February 14, 1952, in accordance with Section 3.04 of the bylaws. Five vacancies will occur on the Board at the end of the current fiscal year, one vacancy to be filled from the present Board and four members to be elected by the Association. The present members of the Board and the years in which their terms of office expire follow:

T. C. Coleman '28.....1952	H. N. Marsh '22.....1953
J. P. Foster '49.....1953	R. P. Sharp '34.....1952
P. W. Hubay '49.....1953	J. E. Sherborne '34.....1952
K. E. Kingman '29.....1953	D. C. Tillman '45.....1952
W. O. Wetmore '37.....1952	

The four members of the Association nominated by the Directors are:

F. H. Felberg '42	A. A. Ray '35
F. M. Greenhalgh '41	K. F. Russell '29

Section 3.04 of the bylaws provides that the membership may make additional nominations by petition, signed by at least ten (10) regular members in good

standing, provided the petition is received by the Secretary not later than April 15. If further nominations are not received by April 15, the Secretary casts a unanimous ballot for the members nominated by the Board. Otherwise a letter ballot is required.

Statements about the nominees of the Directors are presented in this issue of *Engineering and Science*.

—Donald S. Clark, Secretary

## The Nominees

**F**RED H. FELBERG got his B.S. in 1942 and stayed on at Tech to work on the staff of the 10-foot wind tunnel in the Aeronautics Department and get his M.S. in 1945. That year he joined the staff of the Southern California Cooperative Wind Tunnel, operated by Caltech, and has been there ever since. In 1946 he was appointed Lecturer in Aero-



nautics at the Institute and has continued in this appointment, teaching courses in airplane aerodynamics in the Aeronautics graduate school. In 1951 he was appointed Modification Project Coordinator to handle scheduling, budget control, and materials priority problems in connection with the 61½ million dollar expansion and modification program in progress at the Cooperative Wind Tunnel.

**F**RANCIS M. GREENHALGH, after receiving his B.S. in Mechanical Engineering in 1941, started work for the Caterpillar Tractor Company in Peoria, Illinois. He entered and completed their engineering training course, which covered experience in engineering, research, manufacturing, and sales departments. At the close of the training program, he went



into Caterpillar's purchasing department. From 1943 to 1946 he served in the U. S. Navy, doing ordnance specialty work, then returned to the purchasing department at Caterpillar Tractor Company as assistant buyer. Since 1949 he has been in the purchasing department of the Southern Counties Gas Co., and is now technical buyer of electrical equipment, fabricated materials, tools, and special items.

*Notes on Quality* **LIGHTING:**

Here in the West the installation assuring maximum lighting efficiency with minimum service and maintenance is, by every standard of comparison, SMOOT-HOLMAN. The hallmark of quality in better buildings is the presence of SMOOT-HOLMAN equipment.

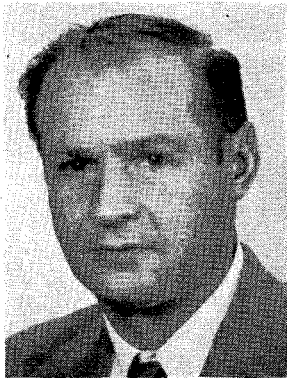
The New D-P Seal-Lux, pictured above, is a vapor-tight fluorescent luminaire built for high efficiency and rugged service life under the most exacting conditions.

- 1 Collegiate Slimline fluorescent
- 2 D-P Line-light
- 3 Constellation Slimline fluorescent
- 4 Educator incandescent
- 5 RLM Standard Dome Reflector
- 6 The Master Floodlight
- 7 LH Ceiling light

**SMOOT-HOLMAN**  
ILLUMINATION EQUIPMENT  
INGLEWOOD, CALIFORNIA  
MADE IN U.S.A.

**SMOOT-HOLMAN COMPANY**, Inglewood, Calif. Offices in Principal Western Cities - Branch and Warehouse in San Francisco

**A**LLEN A. RAY received a B.S. in Mechanical Engineering in 1935. His first job was with the Union Oil Company of California as an engineering trainee at Wilmington and Oleum, Calif. From 1940 to 1942 he taught at Cogswell Polytechnical College in San Francisco, then worked for two years as a process engineer with the Permanente Metals Corp. at San Jose. In 1944 he entered the plastics field and in 1949 started Ray Products Company, manufacturing and fabricating plastic items for the medical profession. Allen is now Vice-Chairman of the Alumni Fund Committee for classes 1933-40.



**K**ENNETH F. RUSSELL graduated in 1929 with a B.S. in Mechanical Engineering. Shortly thereafter he was employed by the Vortex Company (they make air cleaning devices) in Claremont. He's been with them ever since. He started out in the engineering laboratory, then worked his way through product engineer, production engineer, and chief engineer, to become general manager of the Company. He has also acted as a consultant both in design and management. Recently he has served as a member of the Air Filter Industry Advisory Committee for the National Production Authority. Last year he was chairman of the program committee for the Alumni Seminar, and this year he's Seminar chairman. His oldest son, Tom, is a senior in M.E. at Caltech.



### Chapter Notes

**T**HE SACRAMENTO CHAPTER held its first annual dinner dance on February 2, at the University Club. Walter Paulson, ex-'32, and Layton Stanton '27, Ph.D. '31, were in charge of the arrangements and decorations. Present with their wives were: Tracy Atherton '25, John Bailey, ex-'47, Herbert Deardorff '30, George Fleming, Oliver Folsom, ex-'41, Fred Goat '24, Edward Ida '46, Wayne MacRostie '42, Return Moore '47, M.S. '48, Henry Nies, '23, Arthur Root, ex-'26, Richard Silberstein '41, M.S. '42, and Jeffrey Wineland '31.

**T**HE SAN FRANCISCO CHAPTER held an informal dinner dance in the Garden Room of the Hotel Claremont in Berkeley on Sunday evening, February 10.

## ENGINEERING GRADUATES CONSIDER YOUR FUTURE IN AIR CONDITIONING WITH **TRANE**

Trane, a leading manufacturer of air conditioning, heating, ventilating and heat transfer equipment, is seeking qualified engineering graduates for interesting careers with its sales and home office staff.

Those selected will join the Trane Graduate Training Program at La Crosse for an intensive training course that will prepare them for responsible positions in La Crosse or in one of the company's 80 sales offices. The training period is financed by the company to make the trainee self-supporting.

Men who have completed the Trane Graduate Training Program have established an interesting pattern of success with the company. Included in this number are the president and numerous other company officers, managers of a majority of the sales offices and home office sales divisions.

Trane has continued to grow steadily and at a rate consistent with financial stability. Annual sales have increased fourfold in the last ten years. Yet, the company continues to develop new products for new fields to increase its potential business opportunities.

Based on past record and future possibilities, Trane offers you outstanding opportunities in one of the fastest growing industries. For more information write for the brochure "The Trane Graduate Training Program." It contains full details as well as a complete financial report of the company.

**THE TRANE COMPANY  
LA CROSSE, WISCONSIN**

## SIT BACK AND RELAX



**Let Calmec Manufacturing Company  
Worry About  
Your Metal Parts and Products**

We have the most modern facilities and most complete plant to give you the maximum of service, whether it is a small part, a large part, or a product from your ideas to the shipped article direct to your customers, under your name, from our plant.

**CALMEC MANUFACTURING CO.**

Robert A. McIntyre, M.S. '38      Kimball 6204  
5825 District Blvd.      Los Angeles 22, Calif.