



*At Blacker it's an Arabian Night*



*Fleming is a Pleasure Dome of aluminum foil*

## STUDENT LIFE

# FROM THE DAWN OF HISTORY TO KUBLA KHAN

**D**ESPITE THE FACT that it capped a busy week of mid-terms, the recent Interhouse Dance was undoubtedly the most successful in many years.

Dabney's "Dawn of History" decorations included a talking dinosaur and numerous other prehistoric monsters, with luminescent paint for skin. The master stroke of their decorations was a huge volcano which filled Dabney Court, and belched forth flames with a deafening roar. (A spark coil and butane gas supplied the flames; the roar was achieved by amplifying the sound of tennis balls bouncing against a screen.)

Blacker Court boasted a manikin flying on a carpet

CONTINUED ON PAGE 34



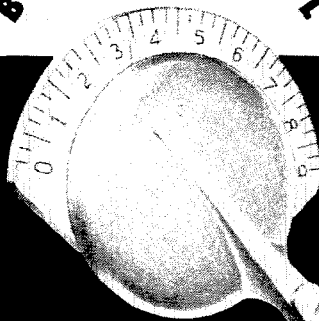
*In Blacker Court—a flying carpet*



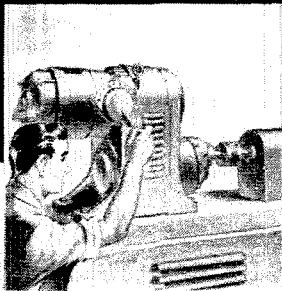
*In Dabney House—a talking dinosaur*

# ANY RPM

BY DIAL CONTROL



THE MIRACLE MOTOR  
INSTANT SPEED CHANGE  
2 TO 10,000 RPM



## U.S.

# VARIDRIVE MOTORS

ANY RPM at your finger tips. Gives magic speed control to your machine. The U. S. Vari-drive Motor gives your machine any and all speeds *instantly* over a 10 to 1 ratio. It definitely increases output. It helps you produce better quality work. 2 to 10,000 rpm; 1/4 to 50 hp. Mail Coupon for 16-page Catalog.

**U.S. ELECTRICAL MOTORS Inc.**

(Box 2058) Los Angeles 54, Calif., or Milford, Conn.

## STUDENT LIFE . . . CONTINUED



Fleming's decorators appropriated 60 medicine-cabinet mirrors to make a solid mirrored wall—forcing at least one rugged individual to shave in the lounge.

overhead, and an artificial pond, to help portray an "Arabian Night." Inside, an Aladdin's lamp, by means of clever lighting, produced a genie upon rubbing.

Ricketts was turned into a "Haunted House," with spiders, skeletons, and a creaking staircase. They were either clever here in putting up artificial cobwebs, or lax in removing the real ones.

Throop Club featured an underground cavern theme with an underground spring, and guests were obliged to crawl through a tunnel to enter and leave the dance.

Fleming came through with the coolest decorations of the evening. Modeled after the Pleasure Dome of Kubla Khan in Coleridge's poem, all walls and exits were covered with aluminum foil, and stalactites hung from the ceiling. Two entrances were lined with walls of solid ice (3,500 pounds). Although a student house rule forbids undue water in the rooms, there was considerable debate over whether or not 500 pounds of ice could legally be placed on someone's bed. A huge mirror covered one whole wall—made up of some sixty individual mirrors from as many medicine cabinets.

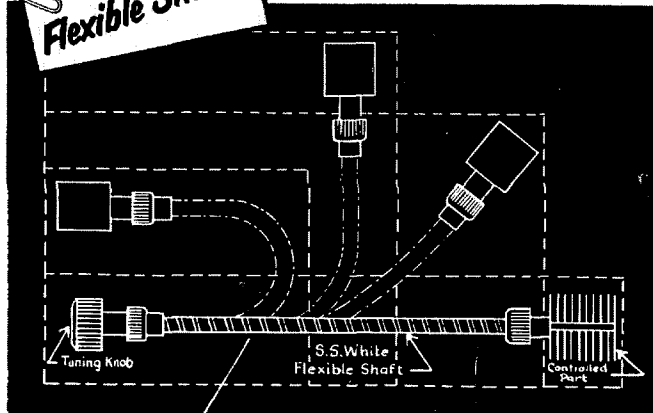
### Political Note

**S**HORTLY BEFORE the election, the Caltech YMCA sponsored a straw vote among Tech undergrads, grad students, faculty and employees. The results:

	Undergrads	Grad Students	Faculty
Eisenhower	255	86	39
Stevenson	141	95	68
Others	30	3	5

CONTINUED ON PAGE 36

**The economics  
of  
Flexible Shafts**



**S.S. White  
Flexible Shafts  
make it easy to meet  
space and dimensional  
requirements**



The flexible construction of an S.S. White remote control flexible shaft allows controlled parts to be mounted where desired to satisfy limited space conditions and to meet specific equipment dimensions. These versatile "Metal Muscles"® can be snaked around turns and curves to provide a one-piece, sensitive control coupling between any two points. As a result, the designer has more leeway in developing a design that meets existing operating, assembly, and servicing requirements and can be produced at lower cost.

Many of the problems you'll face in industry will deal with the application of power drive and remote control with cost being an essential factor. That's why it will pay you to become familiar with S.S. White Flexible Shafts, because these "Metal Muscles"® offer important savings in transmitting power or control.

**SEND FOR THIS FREE  
FLEXIBLE SHAFT BOOKLET**

*Bulletin 5008 contains basic flexible shaft facts and shows how to select and apply flexible shafts. Write for a copy.*

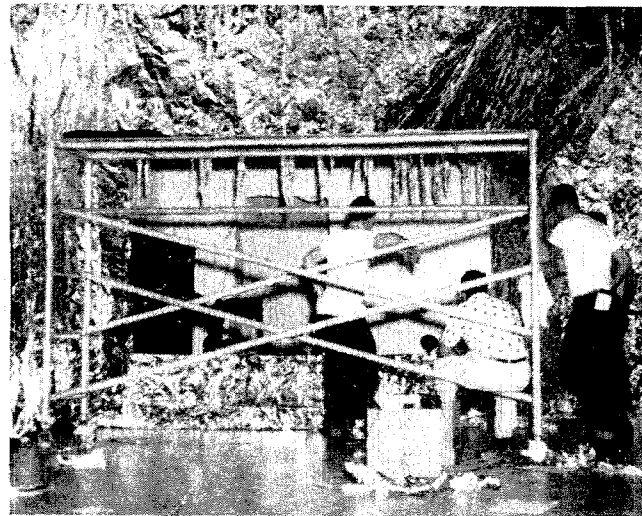


**THE S.S. White INDUSTRIAL DIVISION  
DENTAL MFG. CO.**



Dept. C, 10 East 40th St.  
NEW YORK 16, N. Y.

**STUDENT LIFE . . . CONTINUED**



*The night before: Stalactites still going up at 4:30 a.m.*

The Stevenson vote among the undergraduates seems far more than could be expected, judging from their geographical and economic backgrounds. There was a significant tendency of science majors to favor Stevenson. As for the faculty's overwhelming vote for Stevenson—it only proves what education does for people.

**Shepard Scholarship**

PERHAPS ONE OF the most unusual scholarships offered to students anywhere is the Don Shepard Memorial Scholarship. Shepard, who graduated from Tech in June of 1950, was killed in an airplane accident in October of the same year. He not only took part in school activities, he was also interested in the many cultural opportunities in southern California.

As a memorial to him, his parents and friends set up a \$150 award to the student who could most profitably benefit from attending the many operas, plays, and concerts in this area. The award is given to men who have paid their tuition, but who could not participate in these other activities without aid. This year's recipient is Neil Stefanides, a senior who is also one of the most effective line-backers in our football conference.

**On Water Fighting**

THERE ONCE WAS a time when the water fight was a noble tradition in the student houses. Last year, however, a rule was passed stating that anyone throwing water around inside the student houses was eligible to be fined at least \$5, the money to go to the Interhouse Committee. Recently, however, the students changed the rule so that the money now goes into the treasury of the house wherein the infraction occurs. Nobody seems to be getting rich fast, so we must assume that water fighting, like goldfish eating, has gone the way of all great ideas in this changing world.

—Al Haber '53