

PERSONALS

1918

Ralph T. Taylor is now assistant supervisor for the State Division of Architecture in charge of supervision of public school construction for the 13 southern counties of the state. Formerly in charge of field supervision, Ralph moves into the slot vacated by Ernest Maug '26 (see below).

1921

Edward F. Forgy is still assistant sales manager of the motor and control division at the Westinghouse Corporation in Buffalo, New York. His son Ed has just returned to Fort Ord from Korea. Son John was married last year and is now in the Army.

1922

Francis L. Hopper, after spending the holidays with grandchildren in San Francisco, visited the Institute and spent ten days in southern California renewing old acquaintances. Hop is still with the Bell Laboratories in Winston-Salem, North Carolina, working with military electronic systems for guided missiles, antiaircraft fire control, and underwater sound.

1925

Frank Clayton, chief plant engineer at Convoir in Fort Worth, Texas, has been elected to a three-year term as state director of the Texas Society of Professional Engineers.

Neal D. Smith, formerly executive assistant in the public relations department of the Lockheed Aircraft Corp. in Burbank, has now become county administrator of Sonoma County. He's living in Santa Rosa, Calif.

1926

Ernest Maug has been made supervisor for the State Division of Architecture in charge of supervision of public school construction for the 13 southern California counties. He was formerly assistant supervisor of the southern division. His work involves the supervision of design and construction for all school districts in this area.

1927

Robert Creveling writes from Albuquerque, New Mexico, where he's working for the Sandia Corporation, that he got his MS in 1952—25 years after graduation from Caltech—from the University of New Mexico, where his wife Letitia graduated in 1928, and his daughter Letitia H almost graduated this year. Instead, she married an Air Force lieutenant and is now in Tucson, where he's taking flight training. The Crevelings' other daughter, Patsy, is now in high school.

George E. Moore has just been elected chairman of the Division of Electron Physics of the American Physical Society. Now living in Summit, New Jersey, the

Moore's have three children—a daughter, Kathleen, who is a freshman at Panzer College in Orange, N. J., and two boys, Stephen and John, in high school.

1928

William L. Olsen died on January 15. A resident of San Marino, he had been Los Angeles County engineer since graduating from Caltech, and was engineer for planning the Arroyo Seco Parkway and Angeles Crest Bridge, on the Angeles Crest Highway. Surviving him are his widow, Mrs. Wilma L. Olsen, art supervisor of San Gabriel City Schools; a son, David; his mother, Mrs. Andrew Olsen of Sierra Madre; and a sister Mrs. Clarence Wilson of Pasadena.

1929

Col. Laurence E. Lynn of Sacramento recently received the Legion of Merit in Korea for "exceptionally meritorious conduct in performance of outstanding service" as IX Corps engineer from April 1 to October 20, 1953. He entered the Army in 1940 and served in Europe in World War II. He is now commander of the 24th Engineer Group on the Korean peninsula.

1930

Edward M. Thorndike, PhD, who is professor of physics, and chairman of the department at Queens College, N. Y., starts a year of sabbatical leave this month.

Truman H. Kuhn, professor of geology

ALUMNI ASSOCIATION OFFICERS

PRESIDENT

Gerald P. Foster '40

VICE-PRESIDENT

Kenneth F. Russell '29

SECRETARY

Donald S. Clark '29

TREASURER

George B. Holmes '38

BOARD OF DIRECTORS

Willard E. Baier '23

Robert R. Bennett '45

Fred H. Felberg '42

Francis M. Greenhalgh '41

Douglas C. Kingman '28

C. Vernon Newton '34

Allen A. Ray '35

ALUMNI CHAPTER OFFICERS

New York Chapter:

PRESIDENT

California-Texas Oil Co., Ltd., 380 Madison Ave., N. Y.

VICE-PRESIDENT

Bulova Watch Co., Bulova Park, Flushing

SECRETARY-TREASURER

Attorney, 247 Park Ave., New York

S. Kendall Gold '42

G. William Boutelle '48

Frank F. Scheck '48

Washington, D. C. Chapter:

PRESIDENT

800 World Center Bldg., Wash. 6

SECRETARY-TREASURER

U.S.C. & G.S., RadioSonic Laboratory, Wash. 25

Charles R. Cutler '45

Clarence A. Burmister '25

San Francisco Chapter:

PRESIDENT

California Research Corp., 576 Standard Ave., Richmond

VICE-PRESIDENT

Dow Chemical Co., Pittsburg, California

SECRETARY-TREASURER

Minn. Honeywell Reg. Co., 1136 Howard St., San Francisco

Arnold Grossberg '42

Robert C. Heitz '36

Tom Tracy '48

Chicago Chapter:

PRESIDENT

American Machine & Foundry Co., 188 W. Randolph St.

VICE-PRESIDENT

Illinois Institute of Technology, 3300 S. Federal St.

SECRETARY-TREASURER

Signode Steel Strapping Co., 2600 N. Western Ave.

LeVan Griffiths '37

Eben Vey '41

Harrison Lingle '43

Sacramento Chapter:

PRESIDENT

State Division of Water Resources, 1120 "N" Street

VICE-PRESIDENT

U. S. Bureau of Reclamation, 2929 Fulton Avenue

SECRETARY-TREASURER

State Division of Highways, 1120 "N" Street

Tracy L. Atherton '25

George A. Fleming '12

Mervin A. Schuhart '32

San Diego Chapter:

CHAIRMAN

U. S. Navy Electronics Lab., San Diego 52

PROGRAM CHAIRMAN

San Diego City Schools, 22nd and J Sts.

SECRETARY

Consolidated Vultee Aircraft Corp.

W. L. Bryant '25

Maurice B. Ross '24

Frank John Dore, Jr. '45

and dean of the graduate school at the Colorado School of Mines in Golden, Colorado, recently returned from a trip to Turkey, where he estimated the chromium reserves of a Turkish mining company.

1934

John F. Pearne, still practicing patent law as a partner in the firm of Evans & McCoy in Cleveland, writes that he still hasn't been able to uncover a single Tech alumnus in that area, and has about decided that there aren't any. (*Are there?*)

1936

Wilson H. Bucknell was recently named chief engineer and operating head of the generator division of the O'Keefe & Merritt Company, Los Angeles. Buck has been instrumental in the development of several unique and highly efficient engine-generator sets, which are now being volume-produced at O'Keefe & Merritt for the military. In this connection he has just completed a comprehensive six-week tour of Army Engineer Field Maintenance establishments in Japan and Korea.

Kenyon T. Bush, formerly superintendent of the Grasselli Chemicals depart-

ment in La Porte, Texas, is now assistant production manager.

1937

Richard T. Brice, Ph.D., is with the Otis Elevator Co. in New York City. At the moment he's defense manager, in charge of administering contracts for national defense items. A little over a year ago the Brices moved into a new home in West Orange, N. J.

Stanley vanVoorhees is the inventor of the first power-driven skis to take you uphill. As reported in the December issue of *Science and Mechanics*, Stan conceived the idea of "regulation skis rigged with hill-climbing traction belts and powered by a back-packed gasoline engine with flexible drive shafts at each ski.

1938

Wesley T. Butterworth, M.S., writes from Galena, Ohio, that his ten-year-old son Richard had polio this spring, but has fully recovered by now. Wes is a member of the school board in Galena's Big Walnut District, is also a member of the executive board of the local IAS chapter.

Stephen J. Jennings, M.S., has been

transferred by General Electric from their analytical engineering section in Schenectady, New York, to the aircraft gas turbine division in Cincinnati, Ohio.

J. Kneeland Nunan, M.S., was recently elected president of Consolidated Vacuum Corporation of Rochester, New York, a subsidiary of Consolidated Engineering Corporation of Pasadena.

1939

John C. Evard, Ph.D. '33, now chief of the supersonic propulsion division of the Lewis Flight Propulsion Laboratory of the National Advisory Committee for Aeronautics, presented a paper ("Transition-Point Fluctuations in Supersonic Flow") at the annual meeting of the Institute of Aeronautical Sciences in New York last month. John went to work for the NACA Aeronautical Laboratory at Langley Field, Virginia, in June 1942, and transferred to the Lewis Flight Propulsion Laboratory in Cleveland, Ohio, in October of the same year. He's living in Strongsville, Ohio, with his wife, Jean, and their son.

James Rainwater has been professor of physics at Columbia University since 1952, and is doing research with Nevis 385 MEV proton synchrocyclotron. Jim has been married since 1942 and now has four children (three boys and one girl)—the oldest, 7 years, and the youngest, 20 months.

1940

H. E. Heywood, M.S., has been assistant chief engineer of the Toledo, Ohio, plant of the National Supply Company for the past five years. They are national manufacturers of oil field machinery. Late this year he'll be moving to Gainesville, Texas, to become manager of a new plant National is building there.

Ray Richards has been appointed head of the field service planning department, field service division, at Lockheed Aircraft Corporation. He joined the company in 1940.

1941

Frederick W. Clarke reports among his "honors and possessions" one wife, Mary G.; two boys, Freddie (6) and George (2); and two companies—Rogers and Clarke, which makes lenses, and Optical Machinery, Inc., which makes lens grinding equipment. The Clarkes live in Rockford, Illinois.

1942

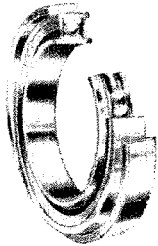
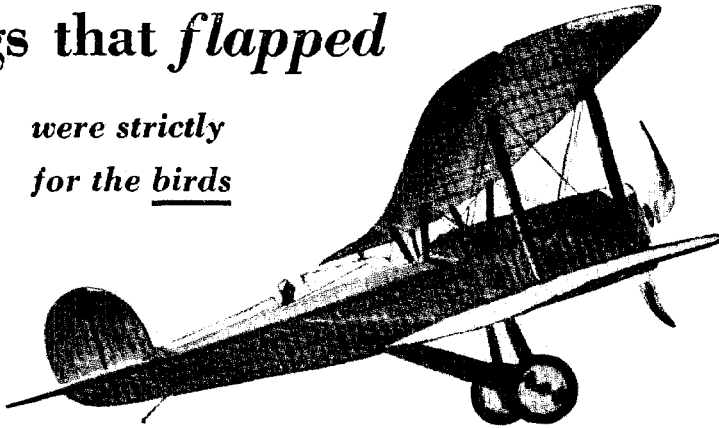
Joe Franzini, Engr. '44, and his wife announced the arrival of Cheryl Ann on January 13. The Franzinis now have two daughters and two sons. Joe is still a member of the civil engineering faculty at Stanford University.

1943

Lawrence Raymond Pugh announces that he has formally changed his last name to Rockwood. At the same time, he's leaving

Wings that flapped

were strictly
for the birds



KP-BS Bearing

A generation ago, about everyone thought that airplane wings should be rigid to be safe. Not so today. Designers of today's high speed planes have found that safety hinged on wing deflection.

To insure unrestricted control systems on wings that bend, Fafnir developed a standard series of Self-Aligning Torque Tube Type Ball Bearings which provide friction-free movement, reduce cost and weight. By keeping in step with aircraft progress, Fafnir continues to lead in the production of aircraft bearings. The Fafnir Bearing Company, New Britain, Conn.

Available
A motion-sound picture depicting high points in manufacture and use of Fafnir Ball Bearings is available to engineering classes. Write to The Fafnir Bearing Company for details.

FAFNIR

BALL BEARINGS

MOST COMPLETE  LINE IN AMERICA

Successful designs must have
low manufacturing costs.

HOW TO CUT COSTS WITH WELDED PRODUCT DESIGN

LOW manufacturing costs are a "must" in today's product planning. As a result, every engineer must know, above all, how to eliminate needless cost in machine designs.

First consideration in designing machinery must be the material used. Steel is three times stronger, twice as rigid as cast iron, yet costs only a third of the price of gray iron.

That's why machine parts built with welded steel designs often cost 50% less to produce.

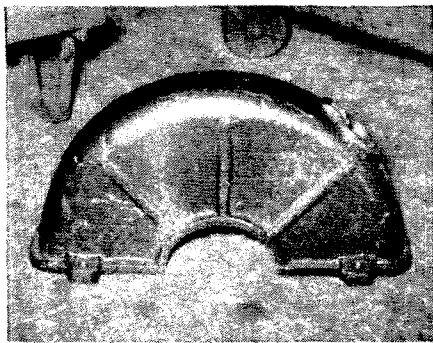


Fig. 1. Original construction of gear case cover weighed 66 pounds... required milling of bottom edge for oil-tight seal with gear case.

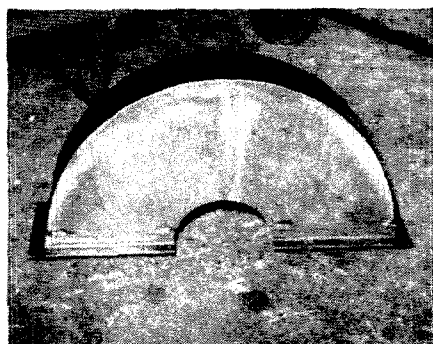


Fig. 2. Steel designed gear case cover now used weighs only 10 pounds... costs half as much to produce. Fabricated entirely in the manufacturer's own shop by arc welding.

Keep in step with the rapid progress in manufacturing with arc welding. Latest design developments are available in bulletins and handbooks that guide the engineering student. Write

THE LINCOLN ELECTRIC COMPANY
Cleveland 17, Ohio
THE WORLD'S LARGEST MANUFACTURER OF
ARC WELDING EQUIPMENT

PERSONALS . . . CONTINUED

his job with Beckman Instruments in Pasadena, to become plant manager of Electro-Measurement Inc. in Portland, Oregon.

1944

Paul S. Winter is director of the Afghan Institute of Technology in Kabul, Afghanistan.

1945

K. Martin Stevenson is on the technical staff at the Hughes Research and Development Corp. in Culver City.

1946

Howard W. Morgan, Jr. writes that he's out of the Navy at last with a full lieutenant promotion. Right now he's a sales engineer with Anaconda Wire and Cable in the Cincinnati, Ohio, office.

David C. Lincoln, M.S. '47, with the Sperry Gyroscope Company in Great Neck, New York, since 1949, was recently promoted to the new position of engineering section head for missile control systems in the Flight Controls Engineering Department.

Lt. Col. Henry L. Gephart, M.S., is now assigned to the design branch of the aircraft laboratory at the Wright Air Development Center, Wright-Patterson Air Force Base, Ohio.

1947

W. C. Cooley, M.S., has been a technical engineer with the aircraft nuclear propulsion department of the General Electric Company in Cincinnati, Ohio, since March, 1953. He received the degree of Doctor of Science in mechanical engineering at MIT in June, 1951.

Morris Feigen, M.S., is on the technical staff of the Hughes Research and Development Laboratories in Culver City.

Roger D. Stuck is teaching at Warren Wilson College, Black Mountain, N. C. He writes that his wife Christine, and children Dean and Phyllis are thriving--and that he will be too, as soon as a broken arm mends up.

Manfred Eimer, M.S. '48, Ph.D. '53, is now in the research analysis section at the Jet Propulsion Laboratory in Pasadena.

1948

John R. B. Whittlesey, M.S. '50 has been studying for his Ph.D. in mathematical statistics for two and a half years at the University of North Carolina. He's currently a research assistant under a grant from the Ford Foundation, says he's maintaining an interest in quantum theory and in psychometrics, has recently published a note in the *Duke Journal of Parapsychology*--and may soon be drafted.

Sol Matt, M.S., received his Ph.D. from Ohio State University on December 18.

Ed Hall, M.S., writes that they're expecting a baby on the Ides of March. He's still at the Wright-Patterson Air Force Base in Ohio, "trying to develop rockets

that go faster, higher and further than anything previously known to man."

1949

Emmett P. Monroe, M.S., received his M.D. degree in 1953, is now interning at Akron City Hospital in Ohio, and plans to enter general practice next summer--location still unknown. The Monroes are living in Cuyahoga Falls, Ohio, and have two daughters--Janise, 3, and Lisa, 1.

Clayton M. Ziemann, Ph.D., was recently made professor of electrical engineering and head of the department of electrical engineering at the United States Air Force Institute of Technology at Wright-Patterson Air Force Base, Ohio.

Murray S. Bornstein, M.S., returned from Europe a year ago after completing a two-year contract as a Corps of Engineers civilian employee. He's spent the past year working for Hardesty & Hanover, New York bridge consultants, as a structural designer. "Not married yet," says Murray, "and no good prospects. Future plans depend on the whim of the draft board."

1949

Frank H. Dickey, Ph.D., has joined the Continental Oil Company as a consultant in theoretical research and will make his headquarters at Ponca City, Oklahoma. Frank has been a chemistry instructor at the University of California at Berkeley for the past two years, and before that, studied for a year in Sweden on a Guggenheim Foundation Fellowship.

1950

Shigeru I. Honda finished his requirements for his PhD in plant physiology from the University of Wisconsin last October. He is now on a Fulbright fellowship at the Botany School of the University of Sydney, Australia.

Richard Scott Pierce, Ph.D. '52, now studying at Harvard under a Frank B. Jewett postdoctoral fellowship, has been named to receive a Jewett fellowship for a second year. He is currently engaged in research on the analysis of automata and lattice ordered rings.

Henry Shapiro, M.S. '51, Engr. '52 was recently advanced to the position of Chief of Applied Mechanics at the Propulsion Research Corporation in Los Angeles.

1951

Ulrich Merten and the former Kathy Williams were married in St. Louis last November. Kent Stratton '51 came from Oak Ridge, Tennessee, to be best man. Mert is still at Washington University in St. Louis, working on a PhD in radiochemistry.

Carl A. Hirsch is now working for The Parsons Co., Frederick, Maryland.

1952

Bill Irwin and his wife announce the arrival of a son, Michael William, on December 30, 1953. Bill is a field engineer

at Induflex Testing Service in Los Angeles.

1953

Arthur E. Britt is now a member of the technical staff of the Hughes Research and Development Laboratories in Culver City.

Bill Blodgett is working as a field engineer for the Sperry Gyroscope Co. on the Skysweeper, a radar-controlled AA gun. Right now he's at Aberdeen Proving Ground, Maryland, though he's due to move on to Fort Bliss, Texas, by about next month. "After that," says Bill, "who knows? May even get back to Pasadena

for a few months—or go overseas."

Alphonse Peters is working as a cost engineer for the Goodyear Atomic Corp. in Portsmouth, Ohio.

Donald E. Coles, PhD, now a research fellow in aeronautics at Tech, is the winner of this year's Lawrence Sperry Award from the Institute of Aeronautical Sciences. The award is made for a notable contribution by a young man to the advancement of aeronautics. Don is the third Caltech graduate to receive this award—Allen Puckett, PhD '49, having won it in 1948, and Dean Chapman '44, PhD '48, won it last year. Don was cited this year for his experimental and theoretical contributions

to the basic knowledge of turbulent skin friction and heat transfer at supersonic speeds.

Joseph D. Gleckler, M.S., is working for Procter & Gamble, in the company's Long Beach plant.

Swaroop BhanjDeo is doing graduate work in geology at Stanford.

Donald O. Emerson is now a graduate assistant at Penn State.

Patrick J. Fazio is working in the geological department of the Shell Oil Company in Los Angeles.

Richard A. Knapp has a job with the Cerro de Pasco Copper Corp. in Morochocha, Peru.

SIT BACK



- AND RELAX

Let CALMEC Worry About Your Metal Parts and Products

We have the most modern facilities and most complete plant to give you the maximum of service. We stand ready to supply small parts, large parts — or products developed from your ideas, and shipped direct to your customers, under your name, from our plant.

CALMEC MANUFACTURING CO.
 ROBERT A. McINTYRE, M.S. '38 Kimball 6204
 5825 DISTRICT BLVD. LOS ANGELES 22, CALIF.

another
SMOOT-HOLMAN
FIRST



The Smoot-Holman Silvray Skylite flush type recessed unit is now completely wired and pre-assembled at the factory with full UNDERWRITERS APPROVAL. These new features greatly simplify installation procedure, resulting in savings in time and money. Skylite utilizes the Silverd Bowl incandescent lamp, sizes 150W/500W, and its contemporary design with baked white enamel finish, harmonizes with every ceiling. For quality and economy, install SMOOT-HOLMAN pre-assembled Skylite units—single or multiple.

look to..... **SMOOT-HOLMAN**for quality

ILLUMINATION EQUIPMENT • INGLEWOOD, CALIFORNIA
 Sales Offices in Most Principal Cities • Branch Office and Warehouse, San Francisco

Oil Properties Consultants, Inc.
 Complete Petroleum and Production
 Engineering Service

Subsurface Geology • Micropaleontology
 Reservoir Mechanics
 Secondary Recovery and Evaluation
 Registered Engineers

Petroleum Engineering Associates, Inc.
 Complete Laboratory Service

Core Analysis • PVT • Fractional Analysis
 Florent H. Bailly, '27 René Engel, Ph.D. '33
 709-711 South Fair Oaks Avenue SYcamore 3-1156
 Pasadena 2, California RYan 1-8141

A E C ENGINEERING AND CONSTRUCTION COMPANY

ENGINEERS • CONTRACTORS • DESIGNERS

STEAM POWER PLANTS • PROCESS PIPING
 MECHANICAL EQUIPMENT INSTALLATIONS

Phoenix LOS ANGELES Las Vegas
 NOrmandy 3-8291

Merrill Berkley Robt. M. Heidenreich