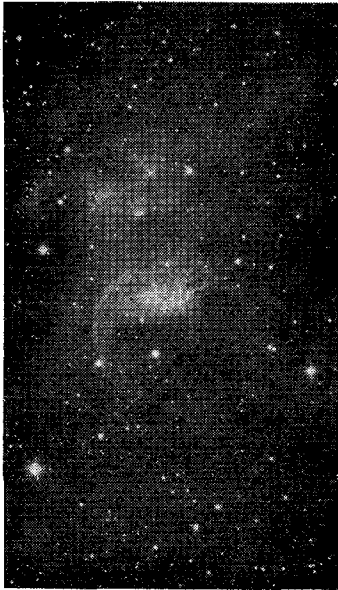


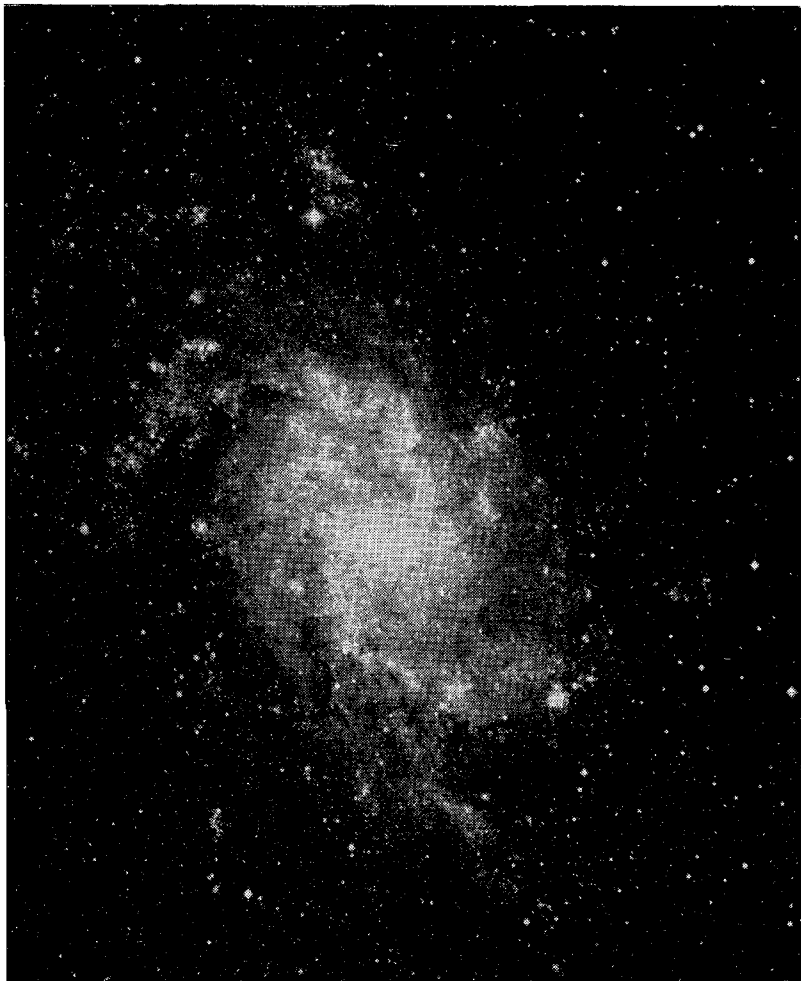
PALOMAR PORTRAITS

Same samples of recent photographs
made with the 200-inch Hale telescope



Nebulosity in Cassiopeia

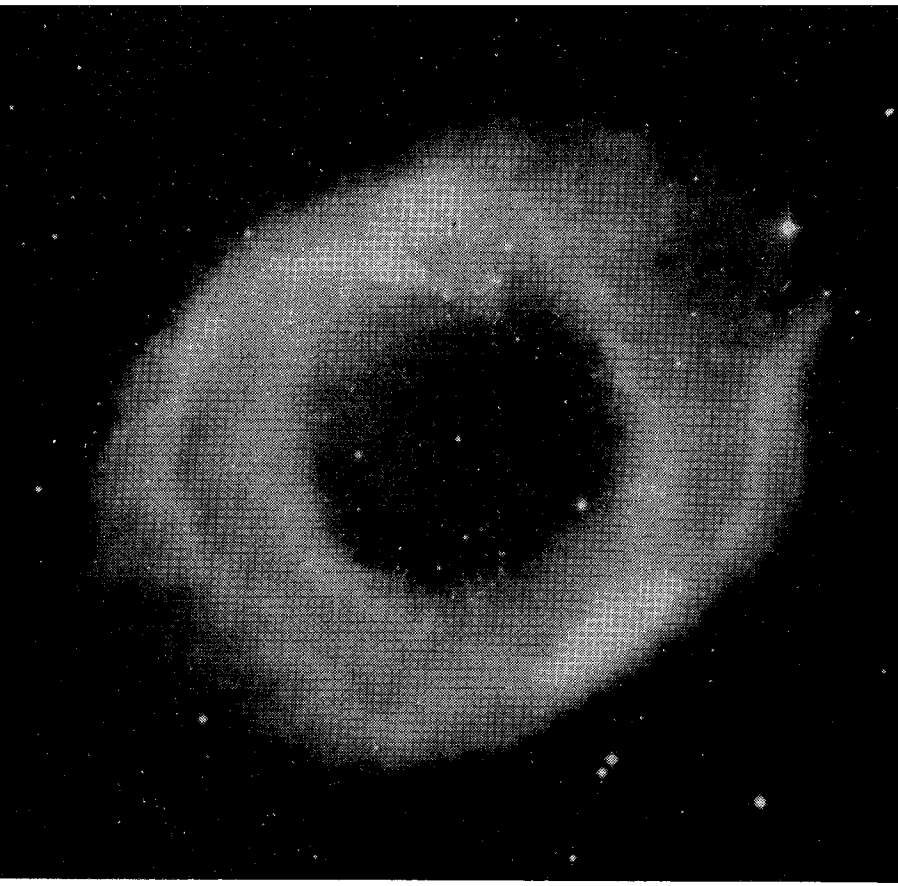
The 48-inch Schmidt's picture of the spiral galaxy Messier 33.



The 200-inch telescope's close-up of the central region of Messier 33.



Planetary nebula in the constellation of Aquarius, photographed on a red-sensitive plate with the 200-inch telescope.



Section of the upper left quadrant of the planetary nebula shown above — enlarged about seven times. 200-inch photograph.

