

# PERSONALS

1922

*W. D. Potter*, employed by the Bureau of Public Roads in Washington, D. C., is being sent by them to Cornell University this year for graduate study in statistics. Bill writes: "Kind of late for this sort of thing, but I'm looking forward to a very pleasurable experience."

1924

*Brigadier General Don Zimmerman*, MS '36, has been appointed dean of the faculty for the new United States Air Force Academy, which will probably go into operation sometime next year. General Zimmerman will be in charge of the selection of personnel to teach the air cadets.

At the 1924 class reunion at the Annual Alumni Banquet last spring, a number of people expressed the desire for information about *M/Sgt. Joseph Lacey*, who, as instructor in Military Science, had served under Captain Hans Kramer at Caltech. Upon inquiry, the Office of the Adjutant General states that *M/Sgt. Lacey*, who served in Headquarters Company, 7th Engineers, in World War I, is now deceased.

1925

*Frank Clayton*, chief plant engineer at Convoir in Fort Worth, Texas, has been elected a director of the Fort Worth Rotary Club.

1926

*J. A. Van den Akker*, PhD. '31, doesn't want any of his classmates to think he has forsaken the field of physics, even if he has become a member of the American Chemical Society. The membership was necessary, it seems, so that he could be chairman of a symposium held at the Fall meeting of the ACS on "The Rheology of Cellulose Fibers and Sheets." This symposium will be sponsored by the cellulose division of the ACS. Johannes is still teaching, and is active in research (in physics) at the Institute of Paper Chemistry in Wisconsin.

1927

*William M. Aultman* has resigned as assistant director of the Department of Water and Sewers in Miami, Florida, to accept a position with Alvord, Burdick & Howson, consulting engineers in Chicago, Illinois. His work continues in the same

field as previously—sanitary engineering.

*J. E. Marsland* was promoted recently to manager of the Technological Department of the Shell Oil Company.

1929

*Andrew V. Haeff*, MS, PhD '32, was recently appointed director of the Research and Development Laboratories at Hughes Aircraft. Before joining Hughes in 1950 he was with the Naval Research Laboratory in Research and Administration.

*Roland W. Lindhurst* died suddenly on August 29. He was Vice President of the Applied Research Labs in Glendale.

1930

*J. G. Pleasants*, MS, PhD '33, has been elected to the newly-created position of Vice President in charge of Research and Development at Proctor & Gamble. Previously he was Vice President in charge of Manufacturing.

1931

*Perry M. Boothe*, MS '32, who has been on duty in Schenectady for four years with the project for nuclear propulsion of submarines at Knolls Atomic Power Laboratory, has been transferred to the Pacific Division, Bureau of Yards and Docks, Pearl Harbor. Perry's wife Marcia and children Allen, 17, Lorraine, 13, and Tommy, 5, are finding the islands a welcome change from the "rigorous" New York climate.

1933

*E. A. Hayes* is now assistant director of the Guided Missile Division of Hughes Aircraft. In his new work Ed will be responsible for research and development. He has been with Hughes since 1946.

1935

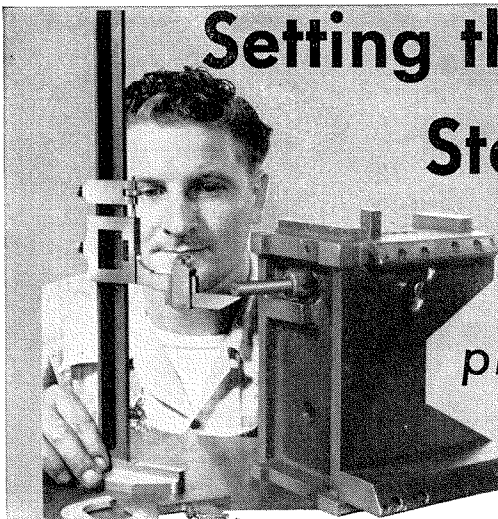
*Henry W. Stoll* thinks someone had a dizzy spell when they nominated him to serve on the ASME Fluid Meters Committee, but the appointment to the big one follows several years of service on subcommittees. The Stoll family now numbers five children, twin boys, two single boys, and a girl. Henry is an engineering physicist at the Taylor Instrument Company in Rochester, N. Y., and is doing his best to keep Rochester Caltech conscious, along with *Don Chapin*, MS '49, the only other Caltech man in town, who works at Taylor Instrument.

1936

*Fred Stitt*, PhD, returns to the Western Research Branch of the U. S. Department of Agriculture in Albany, California, after serving since February 1953 as a member of the Weapons Systems Evaluation Group, Office of the Secretary of Defense in the Pentagon.

1937

*Walter L. Moore*, MS '38, is president of the Austin Branch of the ASCE. Walt is professor of civil engineering at the University of Texas, with special interest



## Setting the Standards

... for a precision-minded world

During the past century Brown & Sharpe Machinists' Tools have raised the accuracy of production standards the world over . . . made them increasingly easier to maintain. From such Brown & Sharpe "firsts" as the micrometer, vernier caliper, and automatic linear division of precision rules have come a complete line of industrial small tools . . . refined and developed by constant research.

In addition, this fine line of quality products includes Johansson Gage Blocks and Accessories, Electronic Measuring Equipment, Cutters, Permanent Magnet Chucks and other shop equipment. Write for catalog. Brown & Sharpe Mfg. Co., Providence 1, R. I.

# Brown & Sharpe B&S

## Welded Steel Designs Cost Less Because:

1. Steel is 3 times stronger than gray iron.
2. Steel is 2½ times as rigid.
3. Steel costs a third as much as iron.

Ultimate savings are limited only by the ingenuity of the designer.

## IMPROVES APPEARANCE SIMPLIFIES PRODUCTION CUTS COST

**Y**OUR success as a designer depends on your ability to keep costs down on products you design. By properly applying the principles of welded steel construction, cost of manufacture can be reduced substantially because material costs are less, actual production is simpler. In addition, the product is stronger, more rugged, has modern appearance.

The examples show how one designer has applied the principles of welded steel to a machine base. The sturdy box-type construction of the steel design eliminates weight because of steel's greater strength and rigidity. Considerable machining, cleaning and finishing of former castings has been eliminated. More modern in appearance, nevertheless, the steel design costs 15% less to produce.

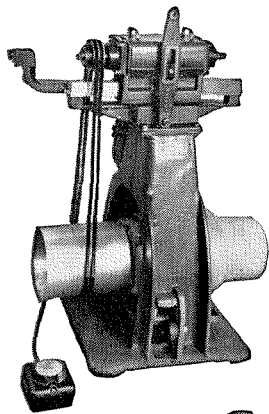
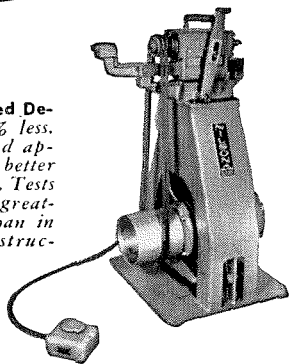


Fig. 1—Original Design of wire straightening machine. Required considerable machining, cleaning and finishing prior to painting.

Fig. 2—Welded Design costs 15% less. Has improved appearance . . . better selling appeal. Tests show base has greater rigidity than in original construction.



### IDEAS FOR DESIGNERS

Latest data on designing machinery for welded steel construction is available to engineering students in the form of bulletins and handbooks. Write:

**THE LINCOLN ELECTRIC COMPANY**  
Cleveland 17, Ohio

**THE WORLD'S LARGEST MANUFACTURER OF  
ARC WELDING EQUIPMENT**

## PERSONALS . . . CONTINUED

in hydraulics and fluid flow problems. All girls in the Moore family—three of them: Claire, 9 years, Cathy, 7, and a baby, Geneva Elaine, a year old in November.

Charles F. Gates, MS '38, has recently been advanced to the post of chief production engineer for the General Petroleum Corporation's production department. Charles has been with General Petroleum ever since he received his MS.

Dr. Dean Nichols, at the King's Daughters Clinic in Temple, Texas, is chief of the dermatology clinic and assistant in Radiology—and is enjoying his work of building up the clinic immensely. He was married last February to Mrs. Warren Allen Smith, thereby acquiring a 15-year-old stepson.

### 1938

Thomas V. Davis, MS '47, and wife Mildred report the arrival of Margaret Susan, their first child, on June 4th in Seattle. Tom is a senior group engineer for Boeing. The Davis family hopes to visit Southern California during the Christmas-New Year holidays "for some of that wonderful sunshine."

### 1939

Hurlowe J. Longfelder, staff engineer of aerodynamics at the Boeing Airplane Company in Seattle, has been elected to serve on a sub-committee of the National Advisory Committee for Aeronautics. He will be working with the sub-committee on high speed aerodynamics.

John W. Black has been appointed assistant director of the Guided Missile Division at Hughes Aircraft. John has been with Hughes 14 years, and has served in the Research and Development Laboratories continuously since 1940.

### 1940

Leo Brewer, assistant professor of chemistry at the University of California, is assisting with a study on the chemical reactions of stars. This will comprise part of a chemical inventory of the universe, being undertaken by the astronomy department of UC.

Ludwig Ivan Epstein, MS '41, is now working for the Glenn L. Martin Company in Baltimore. Ludwig says the work is entirely mathematical and very interesting. He's still single, still publishing in the Journal of the Optical Society of America.

### 1941

Robert H. Harris has sent a quick run-down of his activities since graduation, commencing with his marriage to Betty Ann Morice, a chemist, in 1946. Next notable event was the birth of Marten Hutchison Harris II in 1949. In February, 1951, Bob received his PhD in chemistry

from Purdue, and is now assistant professor of inorganic chemistry at the University of Nebraska.

Colonel John K. Arnold, MS, who has been missing in action since January 12th, '53, when his B-29 disappeared in a combat mission over North Korea, has now been located as a prisoner of war. The alumni office has received the following letter, which may be of interest to his classmates:

Department of the Air Force  
Headquarters United States Air Force  
Washington 25, D.C.

Gentlemen:

In the past you have expressed your interest in Colonel John K. Arnold, Jr. As you may know, the Chinese Communists have reported that he is in their custody. I am writing to advise you that arrangements have been made whereby parcels and letters may be sent to Colonel Arnold.

The Office of Export Supply, Department of Commerce, has issued a letter of authorization to the legal next of kin which must be presented to the Postmaster when mailing packages.

Regrettably, the Department of the Air Force has been unable to procure letters of authorization for other than the legal next of kin. However, if you so desire, you may be able to make arrangements with Colonel Arnold's wife to include in one of her packages any gift you wish to send.

You may write as often as you desire.

Letters should be addressed as follows:

Colonel John K. Arnold  
c/o Chinese People's Committee for World Peace  
Peking, China

Your own name and address should be placed in the upper left-hand corner of the face of the envelope. The words "Prisoner of War Mail" will not be used.

Should you receive any form of communication from or concerning Colonel Arnold, I respectfully request that you furnish this Headquarters, without delay, the original card, or letter and envelope, or photostatic copy thereof. This information may be helpful in securing more definite details concerning his welfare. Any communications you may forward will be handled with strict confidence and returned to you after they have served their purpose.

Your cooperation in this matter will be appreciated.

Sincerely yours,

R. W. Springfield  
Lt. Colonel, USAF

If you would like to contact Mrs. Arnold, her address is 8 National Street, Montgomery, Alabama.

Stanley Sohler was elected president of the Western Sun Bathing Association in July.

David Wood, MS '46, PhD '49, assistant

## PERSONALS . . . CONTINUED

professor of mechanical engineering at Caltech, has been appointed to the city council in Sierra Madre. During World War II Dave was engaged in research at Los Alamos.

1942

*John H. Rubel* is chief of the new Fire Control Systems Laboratory at Hughes Aircraft, heading three divisions: Radar, Computing and Control, and System Integration. John joined Hughes in 1946; previously he had been with Lockheed and General Electric.

1943

*John R. Spencer* received a double addition to the family a year ago; twins, a boy and a girl. The Spencers have one other child. Last spring John was promoted to assistant chief reservoir engineer or Continental in Ponca City, Oklahoma.

*Albert Stallkamp*, PhD, received his doctor's degree at Caltech this spring, and was married to Emilie Graeber June 26th in Pasadena. They had a wedding trip to Jasper, Lake Louise, and Banff, Canada, before returning to make their home in Pasadena.

1944

*Ronald S. Johnson* joined the Ford Motor Company in July. He is working in the Research and Statistical Department in Livonia, Michigan. At the same time Ronald is working on his PhD, which he expects to receive from the University of Michigan in February, 1955.

*R. F. Mettler*, MS '47, PhD '49, has been appointed as a special consultant to the U. S. Department of Defense. Rube started his special assignment in May for the Assistant Secretary of Defense, Research and Development. He is on leave of absence from his regular job as associate head of the Radar Division, Research and Development Laboratories, Hughes Aircraft.

*C. Warren Hunt* reports the arrival of a son, Malcolm Ian, on July 6th—the Hunts' wedding anniversary! This is their second child, the first being their three-year-old Lucile. Warren is currently chief geologist for Petcal Limited and Canadian Homestead Oils Limited of Calgary, Alberta. There are several other Tech alumni in Calgary: *John Legge* '36, a geo-physical consultant, *Ed Alcock* PhD '35, of National Geophysical, and *Paul Kartzke*, '34, Re-

gional Manager of Shell Oil Company.

*Alois W. Schardt*, PhD '51, is a new member of the staff of the Los Alamos Scientific Laboratory of the University of California. Before going to Los Alamos, Alois worked for the Brookhaven National Laboratory.

1945

*Dudley B. Smith* was recalled (involuntarily) to active duty with U. S. Navy Seabees in 1952. After a two-year stint he was released in May, '54 to return to his patent law practice in Portland, Oregon. The Smiths' son, Michael, was born in the Philippines a year ago last September while pa was still on active duty with the Navy.

*Raymond C. Wheeler* has been promoted to the post of chief industrial engineer for General Petroleum's Marketing Department. Ray, who has been with the company since 1946, will make his headquarters in Los Angeles.

*William J. Elliott* has formed a partnership with *Ralph B. Pastoriza*, '44, to practice law in Santa Monica. They plan to specialize in patents and trademarks. Bill was formerly employed as an attorney in the Washington office of the Westinghouse Patent Department. Ralph has had a diverse background in patent law, most recently as a patent attorney in private practice in L.A. He was married in 1953 to Jennie Elms, who at that time was assistant head nurse at the Neurological Institute of the Columbia Presbyterian Medical Center in New York.

1946

*Lt. George R. Pool* is now with the staff of Vice Admiral Woolridge, Commander of the Second Fleet. George is the Carrier Controlled Approach Officer. The Second Fleet staff, based at Norfolk, Virginia, is composed of all the active Navy ships on the East Coast.

*John Fleming*, class secretary, sent in a note regarding the informal class reunion held June 26th at the Huntington Beach State Park. Twenty-three members met for a beach party, which started about 3:30 and went on until late in the evening.

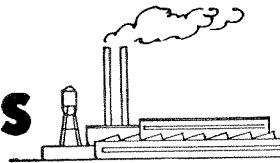
The idea for the reunion originated with *Roger Clapp* and *Bob Sensibaugh*, and *John Tabor*, *Hal McMann* and *John Fleming* pitched in to organize it.

On hand were *James Evans*, *Louis Jensen*, *Colvin Kempton*, *C. R. McEwen*, *David Nielsen*, *Richard Schuster*, *Stan Mendes*, *Teck Wilson*, *Herb Royden*, *Don Root*, *Steve Babcock*, *Orison Wade*, *Howard Greenfield*, *Hal Comlossy*, *Hubie Clark*, *Wayne Blackman*, and *Phil Benton*.

*Robert L. Schrag* received his PhD in electrical engineering from Penn State on June 7th.

*George A. Hufford* was married last May. He is a math instructor at Princeton.

# for all industries



**Agricultural Equipment**  
**Aircraft**  
**Air Conditioning**  
**Automotive**  
**Construction Machinery**  
**Electric Motors**  
**Household Appliances**  
**Instruments**  
**Machine Tools**  
**Portable Power Tools**  
**Textile Machinery**  
**Wood Working Machinery**

The most complete line of ball bearings and power transmission units in America. The Fafnir Bearing Company, New Britain, Conn.

*Facts about Fafnir*

Fafnir's five New Britain plants contain nearly 22 acres of floor space.

# PERSONALS . . . CONTINUED

*Robert C. Siegel* was released from active duty in the Navy last June, after serving 21 months in Yokosuka, Japan. He's now working for the Margo Operation Co. in Oceanside, California.

*Ted Neale, Jr.* has been named a member of the Southern California Advertising Agencies Association's board of directors. Ted is the son of the father-and-son Neale Advertising Associates.

*Milton A. Strauss*, MS '48, reports that he was discharged from the Navy last March, is now associated with his father in the summer resort business at Lake Mills, Wisconsin. "Latest family muster reveals three girls, one boy."

## 1947

*Eugene Wyszpolski*, MS, was recently appointed assistant chief engineer for the USN—Bureau of Aeronautics General Representative—Western Division. The Wyszpolskis (including a son) live in Arcadia.

*Loren F. Stringer*, MS, engineer at the East Pittsburgh, Pa., plant of Westinghouse, has been awarded a graduate scholarship for a year of advanced study. Loren served 36 months with the Navy in World

War II before joining Westinghouse in 1947. As a member of the metal working section at Westinghouse he has been greatly concerned with the design and development of steel mill drives.

*Walter Ogier*, PhD '53, was married June 26th to Mayrene M. Groton of Pasadena.

## 1948

*Leroy C. Land* returned in May from 16 months duty with the Signal Corps in Korea. (For his work as G-3 Plans Officer for the Signal Corps Leroy received the Legion of Merit Medal and the Ulchi Medal from Korea. After an enjoyable 30 day leave with his family in Logan, Utah, he reported to Ft. Leavenworth for temporary duty with the staff and faculty of the Command and General Staff College. In September he started the regular course at the Command and General Staff College. His family—wife Marjorie, son Edward, age 7, daughters Mary Linda, age 11, and Susan Kaye, age 3, are living on the post.

*Rupert M. Bayley* received his MS degree in electrical engineering from USC in June. He is now working as a Trans-

mission Design Engineer Associate for the City of Los Angeles.

## 1949

*Bill Sylvies* and wife have moved to Boise, Idaho, where Bill is working as an engineer-in-training for the State Highway Department.

*Laurence H. Nobles*, MS, is an instructor in geology at Northwestern University. In the summers he does glaciological research in northern Greenland.

*Kenneth Gardner* is coming back to the sunny west, after receiving his MS at MIT last month. Ken was married a year ago.

## 1950

*Herbert A. Forrester* received his PhD in June from Princeton, and will be teaching math this year at the University of Washington in Seattle.

*Julian Brody* received his PhD from Princeton in September. Immediate plans are being made for him by the Air Force.

*Marco A. Romero* has been living for the last year and a half in Camp Roblecito in the state of Guarico, some 100 air miles south of Caracas, Venezuela. (Just to give an idea of the terrain, Marco says

highest quality and standards

look to..... **SMOOT-HOLMAN** ..for quality

INGLEWOOD, CALIFORNIA  
MADE IN U.S.A.

ILLUMINATION EQUIPMENT

- PM-284 COLLEGIATE
- SKYLIKE
- 168 RECESSED TROFFER
- EDUCATOR
- FLOODS

INGLEWOOD, CALIFORNIA

OFFICES IN PRINCIPAL CITIES

aeronautics  
astronomy  
biology  
business  
chemistry  
economics  
electronics  
engineering  
geology  
management  
mathematics  
mechanics  
metallurgy  
meteorology  
mineralogy  
nuclearonics  
petroleum  
physics  
plastics  
statistics

## rocketry

Homer E. Newell Jr., HIGH ALTITUDE ROCKET RESEARCH (Academic Press, \$7.50)

All technical books are available at

## VROMAN'S

Technical Book Division

695 E. Colorado St., Pasadena

SY. 3-1171

RY. 1-6669

Industrial Discount  
Inquiries Welcomed

Write for  
Free Catalog

## E&S SCIENCE WRITING CONTEST

for undergraduates & graduate students

\$100 first prize

\$50 second prize

Articles should be based on some phase of scientific or engineering research, or some individual, connected with Caltech. They may be from 1,000 to 5,000 words, typed, double-spaced.

All manuscripts submitted will be sent to editors of Scientific American for judging. Contest closes May 1, 1955.

E&S will publish all suitable articles throughout the year, paying at rate of \$10 per published text page, or roughly a cent a word.

## PERSONALS . . . CONTINUED

that 100 miles can be traversed by car in seven hours). It's quite an isolated life, but with 60 American families there's plenty of company. Marco is working as a petroleum engineer, specializing in reservoir engineering. He reports the following news of other grads: "Rex Ragon has been working not far from Caracas as an interpreter with a United Geophysical seismograph crew. The only other grad I've seen outside of Pasadena is John Holmes, '51, whom I met while we were both in the Third Infantry Division in Korea in 1952. Recently I met Gerald Sichel, who made many friends in his three years as a chemistry major at Tech. He is now a sales promotion supervisor for the Upjohn Company in Caracas."

Harry Brough has been transferred to New York by the Shell Chemical Company.

Donald H. Baer is now a member of the technical staff of the Microwave Laboratory, Hughes Research and Development. He was formerly employed by the Phillips Petroleum Company.

Bruce B. Stowe received his PhD from Harvard on June 17th.

Dr. Raymond Brow, who is serving his

internship at L. A. General Hospital, was married June 19th to Mary Wachter.

Vern A. Edwards was married June 12th to Doreen Lawson of Pasadena. He is employed as a civil engineering press engineer for an Oakland firm.

### 1951

Joe Carter, MS, research engineer for Boeing Aircraft in Seattle leads an active life in his spare time—mountain climbing, flying and skiing being just a few of his current activities. Joe mentions that there are quite a few Tech men at Boeing, and he occasionally sees Rick Hughes, Dick Merritt, Virgil Sims, and Gib Oakes; all graduate students of '51.

Richard Smyth and wife Emilie announce the arrival of Randolph Lyle Smyth on July 7th.

W. Duncan Rannie, PhD, associate professor of mechanical engineering at Caltech, left last June for Europe to serve as a member of the Scientific Advisory Board to the Chief of Staff, U. S. Air Force. He returned to Caltech early in September.

Robert Kraemer was married on June 20 to Ann Park in St. Theresa's Catholic Church, Alhambra. Bob is employed as a research engineer in rocket propulsion at

North American Aviation.

Pierre St. Amand, MS, PhD '53, has been awarded a United States Educational Exchange Grant as a Research Assistant in Seismology. He will conduct research in geophysics at the Observatoire de Haute Provence and Observatoire in Lyon, France.

Marc Kampé De Fériet was married July 29th to Mademoiselle Huguette Giffo in the Cathédrale of Quimper, France.

Lt. Robert R. Munro, MS '52 is serving as resident officer in charge of Naval construction at Bristol, Tennessee.

### 1952

Ronald Shreve and Denver Gore, MS, are serving as resident associates in the student houses at Caltech this year. Ron will be in Ricketts and Denver in Dabney. Ron is taking graduate study in physics, and Denver came to Caltech as a Guggenheim Jet Propulsion Fellow in 1952.

Gerald Fasman, PhD, has been seeing Europe since receiving his doctorate. After leaving Caltech in '52 he spent two years at Cambridge, England, and the last year at the Eidg. Technische Hochschule in Zurich, Switzerland. Currently he is in Rehovoth, Israel, at the Weizmann Institute of Research, biophysics department.

### 1953

Donald A. Darms, now a private in the Army, recently arrived at the White Sands Proving Ground, Las Cruces, New Mexico. Don is an electronics research engineer.

Jean L. Vidal was married on June 18 to Joy Richardson in Passaic, New Jersey.

Oliver R. Price has joined the Hughes Research and Development Laboratories as a member of the technical staff of the Microwave Laboratory. He was formerly employed by the University of California in Los Angeles.

Bert E. Brown, MS, is a physicist with the Scientific & Tests Branch of the Puget Sound Naval Shipyard, Bremerton, Washington.

Rolf D. Weglein, MS '54, and Arthur J. Stasney, MS '54, have joined Hughes Aircraft as members of the technical staff of the Radar Division, Research and Development Laboratories.

### 1954

John J. Peyton was named outstanding senior cadet at the Air Force ROTC Summer Camp at McClellan Air Force Base, Sacramento. John was selected for the honor from the cadets representing 12 colleges and universities in the western states and Hawaii. Simultaneously, he received his commission as second lieutenant in the Air Force Reserve.

Howard E. Shanks is now a member of the technical staff of the Radar Division of the Hughes Research and Development Laboratories.



Quality...

### A Key to K&E Leadership

Projects created by engineers, architects, designers, scientists start with drawings . . . on tracing paper. Modern needs offered a difficult challenge . . . to produce a tracing paper combining permanent strength, permanent transparency and the ideal drawing surface. Albanene®, the acknowledged leader of quality papers, has achieved this. Quality is one of the keys to K&E's eighty-seven years of leadership in drafting, reproduction, surveying and optical tooling equipment and materials, in slide rules and measuring tapes.

**KEUFFEL & ESSER CO.**

New York • Hoboken, N. J.

Chicago • St. Louis • Detroit • San Francisco • Los Angeles • Montreal