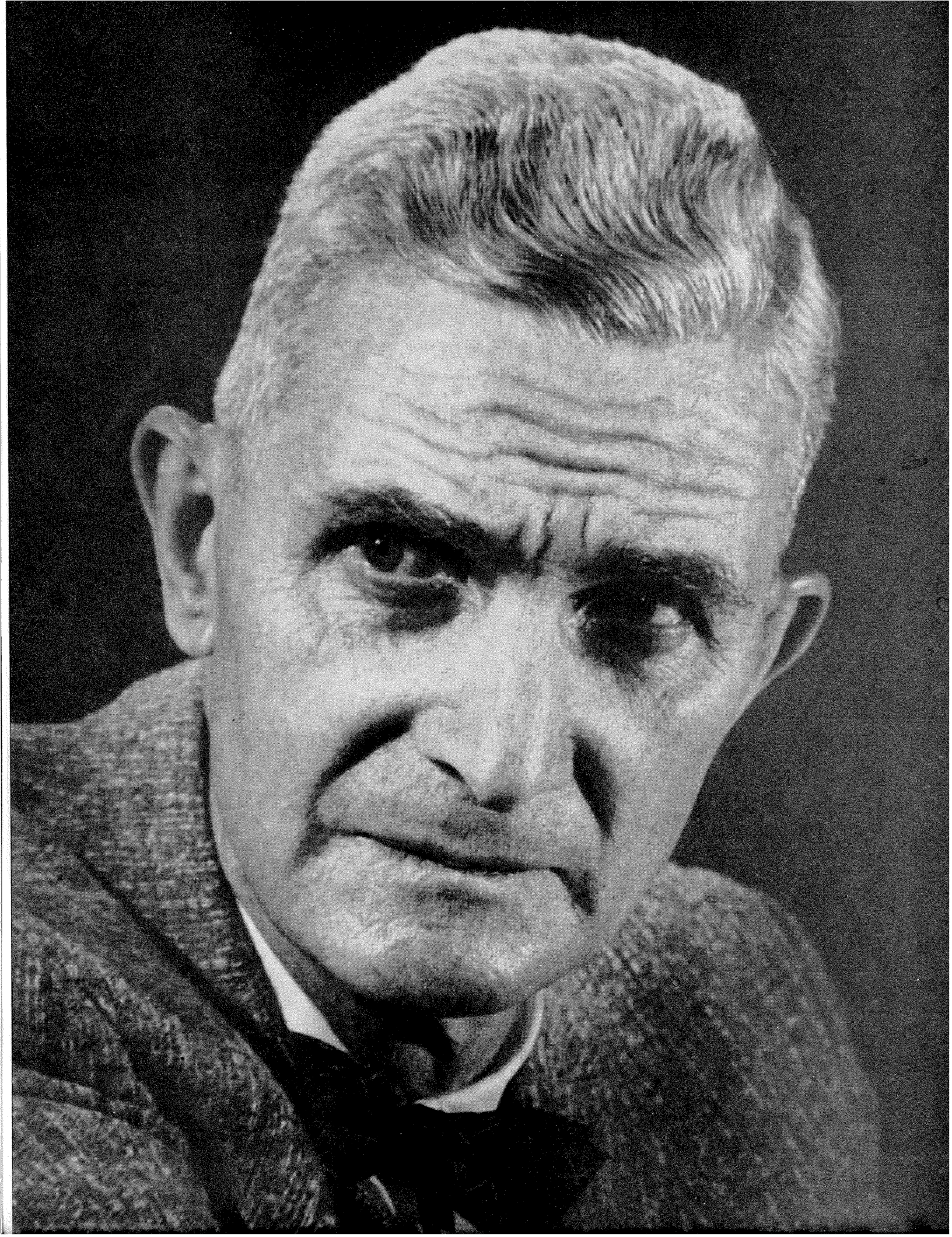


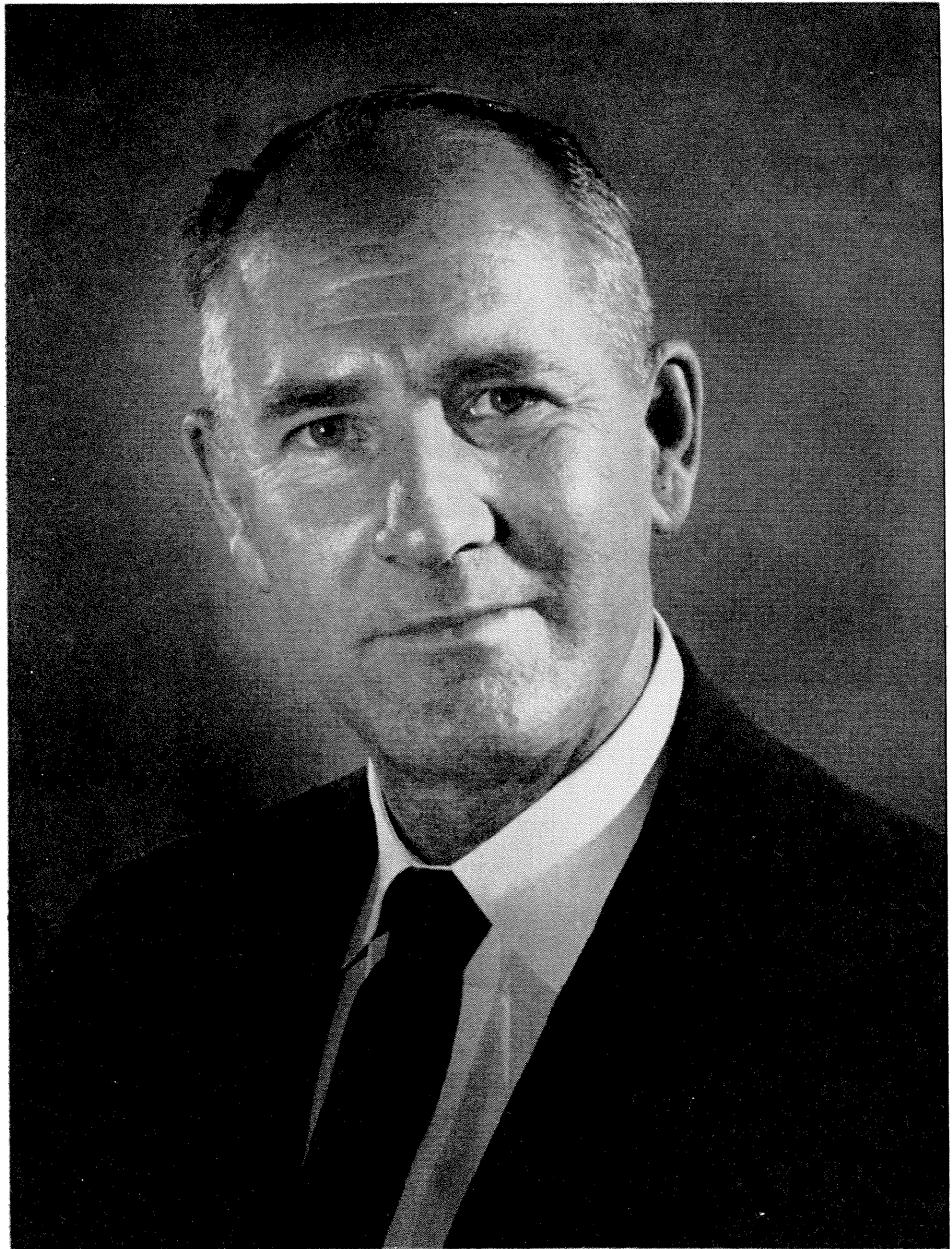
# A PORTFOLIO OF FACULTY PORTRAITS

by THOMAS W. HARVEY

**T**HE PHOTOGRAPHS on the next eight pages were taken by Thomas W. Harvey, administrative assistant of physics at Caltech. Among other things, Tom Harvey runs the physics stockroom (more commonly known as "Harvey's Dime Store") and, in the course of a normal year, can produce enough miscellaneous equipment to set up approximately 300 laboratory experiments for freshmen and sophomore classes and for the renowned Friday Evening Demonstration Lectures.

After hours, Tom Harvey is a photographer. He's been one for 25 years, since he was 14, and his chief photographic interest has always been in portraits—in trying to record, as honestly as possible, the character in a face. Since he came to Caltech in 1947, faculty members have been some of Tom Harvey's favorite subjects. Some of the favorite faces in his collection are on the following pages.

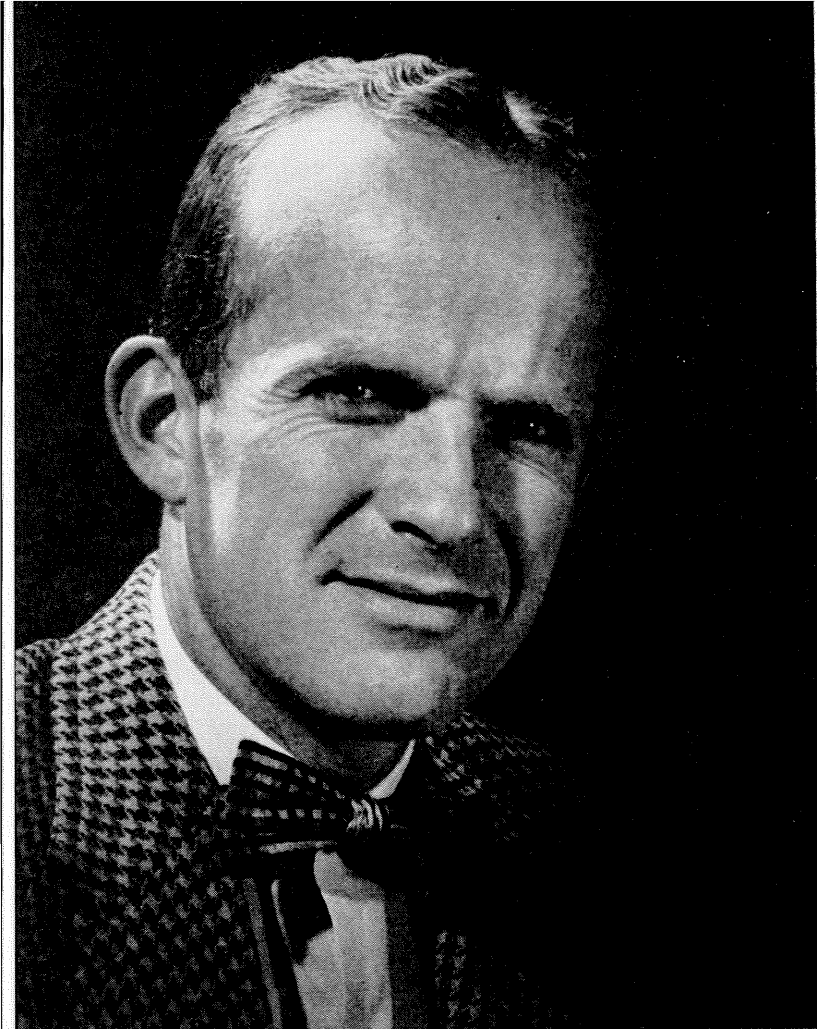




*George W. Beadle, professor of biology, and chairman of the biology division*

*William R. Smythe, professor of physics*

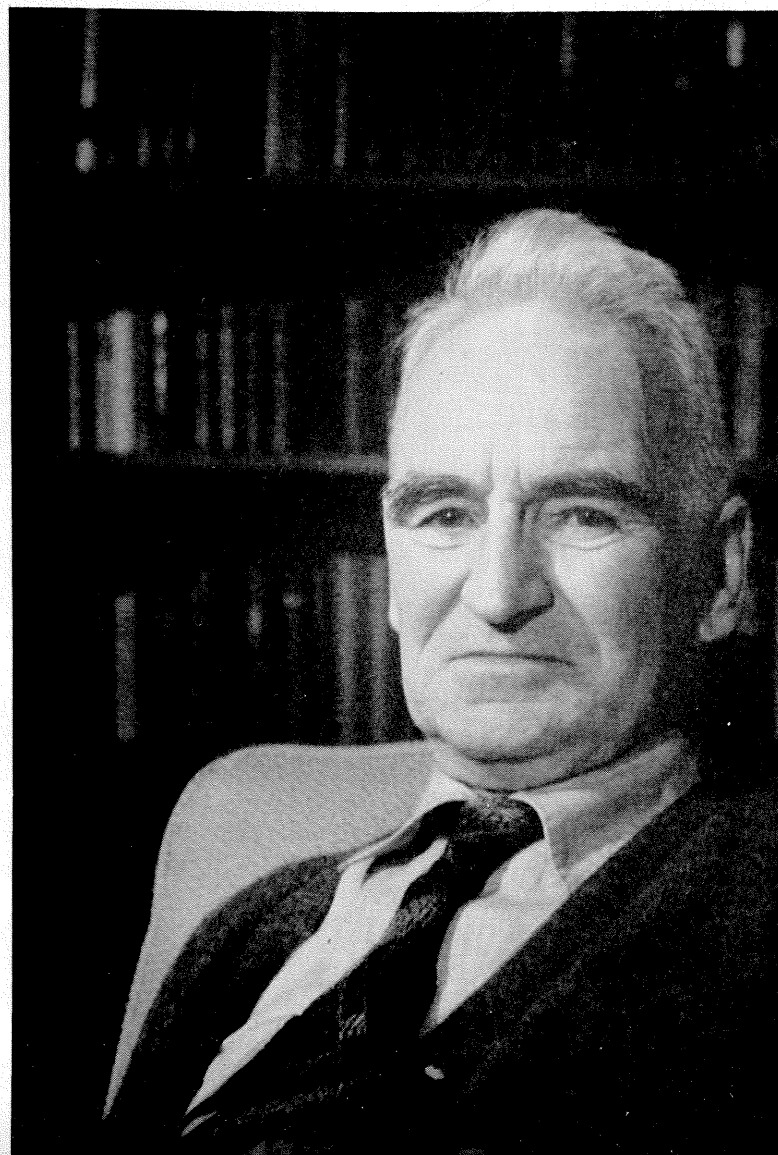
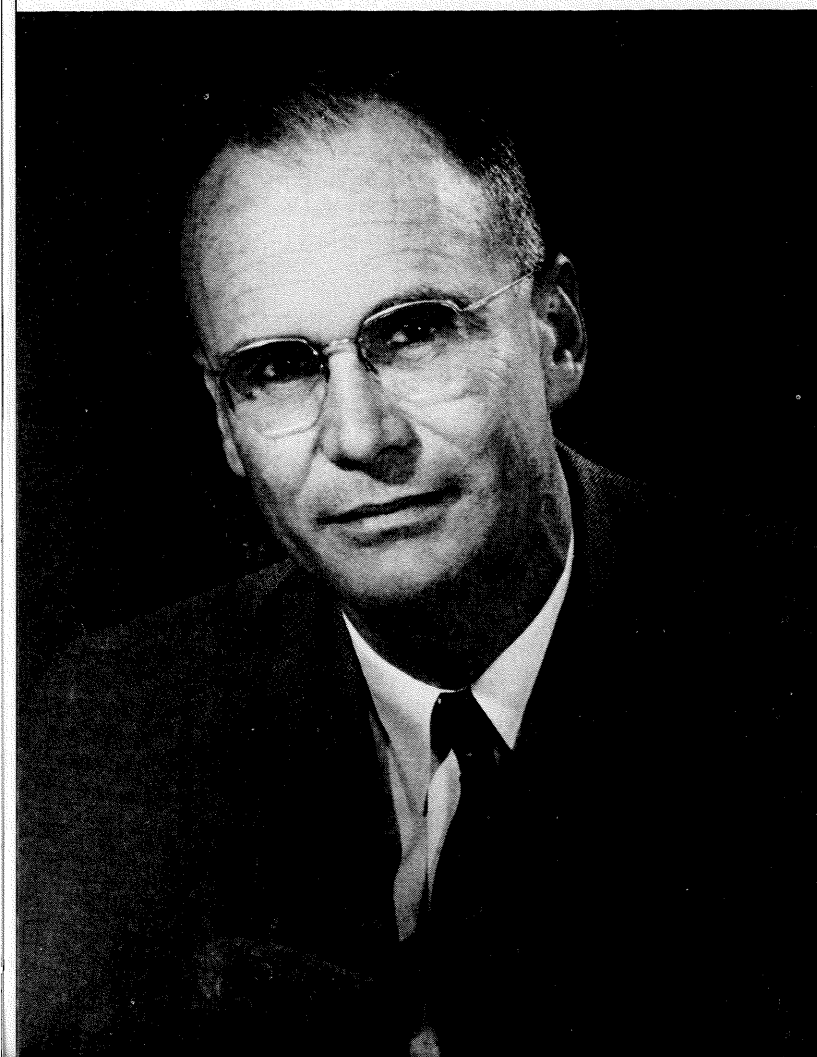




*Gunnar Bergman,  
assistant professor of chemistry  
and mechanical engineering*

*Robert B. King,  
professor of physics*

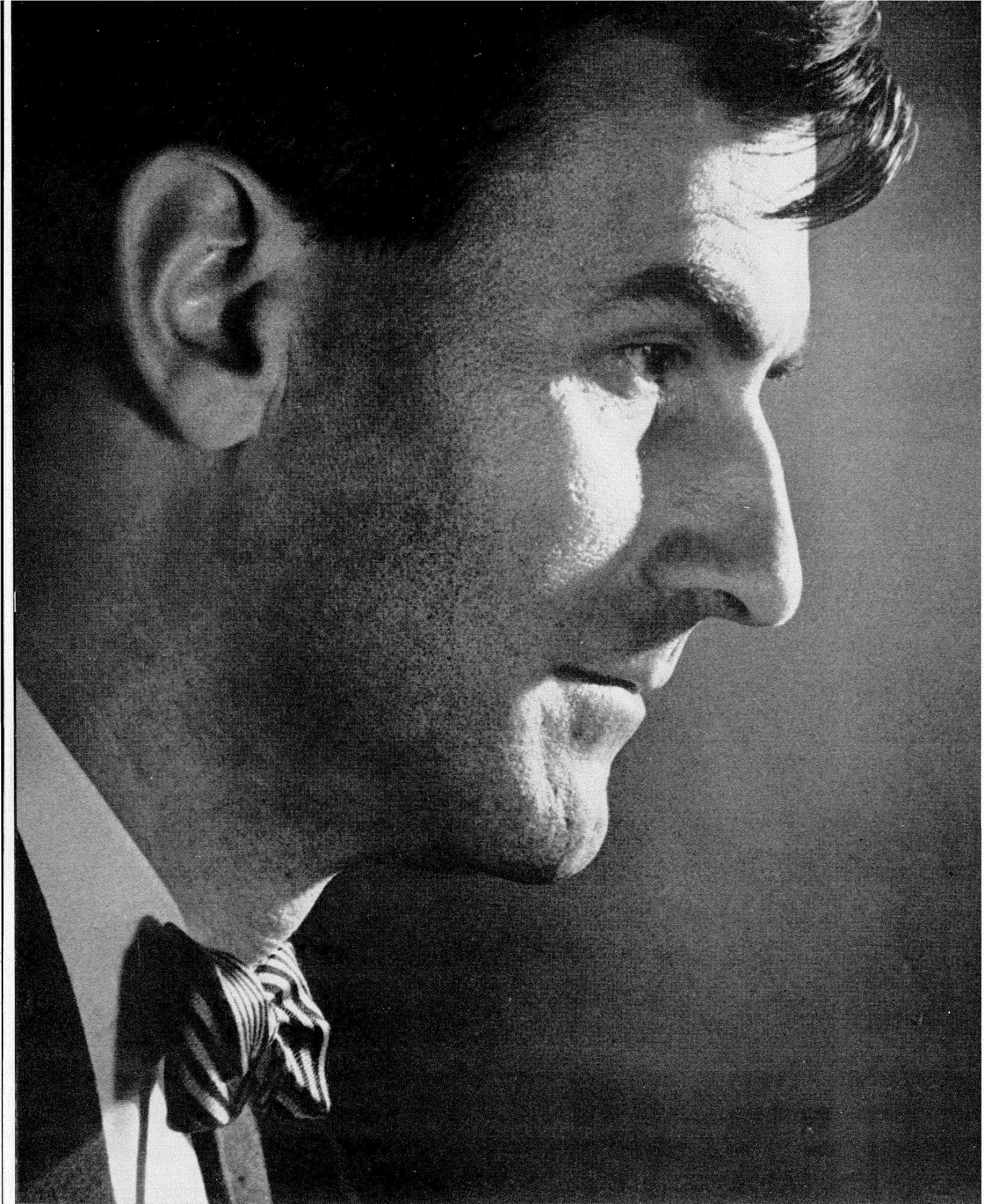
*Eric T. Bell,  
professor of mathematics, emeritus*





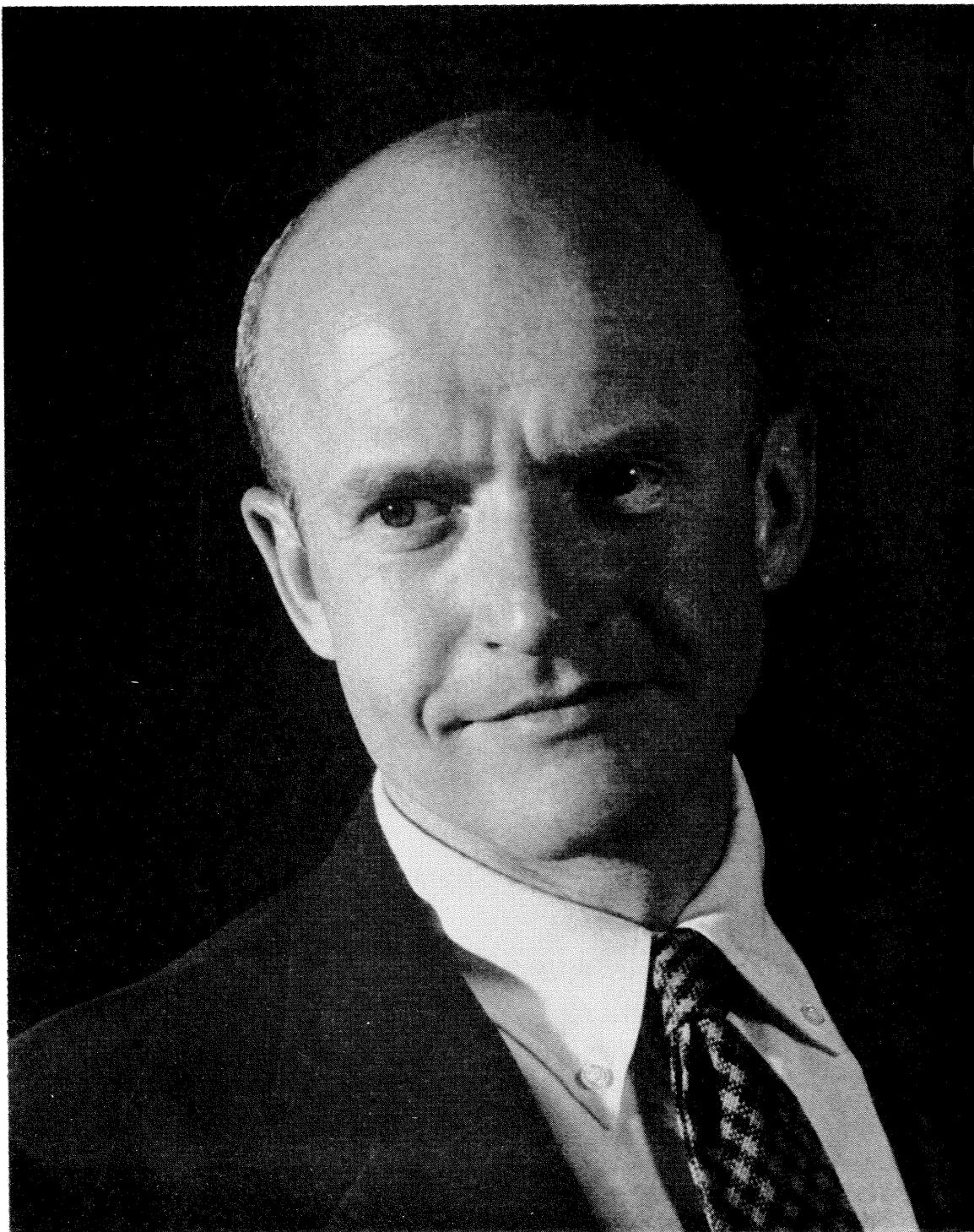
*Harvey A. Eagleson, professor of English*





*Peter Kyropoulos, associate professor of mechanical engineering*

*James C. Davies, associate professor of political science*







*Richard H. Jahns, professor of geology*





*Richard P. Feynman, professor of theoretical physics*