

A CALTECH QUIZ

by GEORGE W. BEADLE



1.

2.



You think you know the Caltech campus? Then try to identify these pictures, taken by George W. Beadle, chairman of the Division of the Biological Sciences.

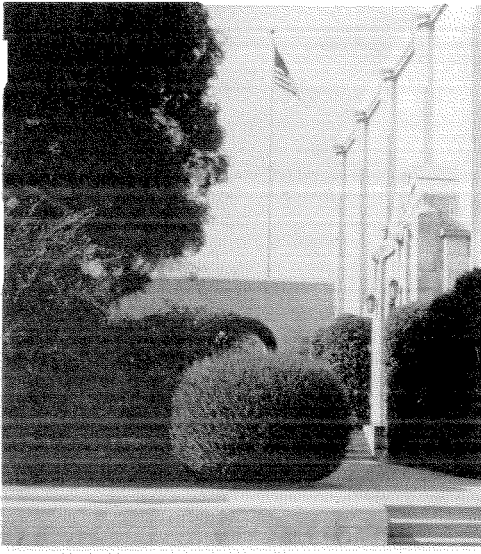
You should be able to answer three questions about each picture: (1) What is it? (2) Where is it on the campus? (3) Which way was the camera pointing?

Give yourself 1 point for each picture. If you get 7, you are highly observant. If you get 13, you are cheating.

Answers on page 38.

3.

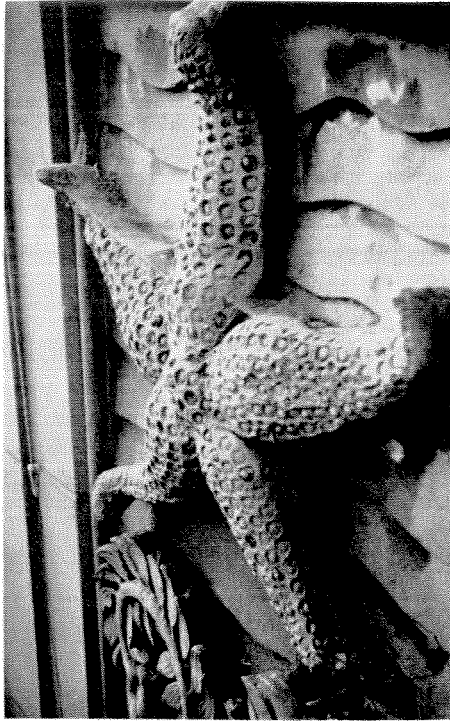




4.

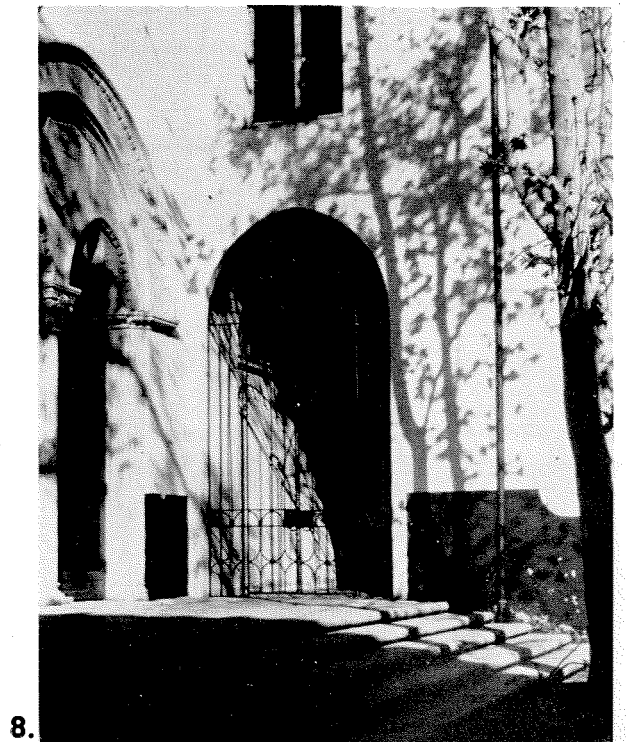


5.

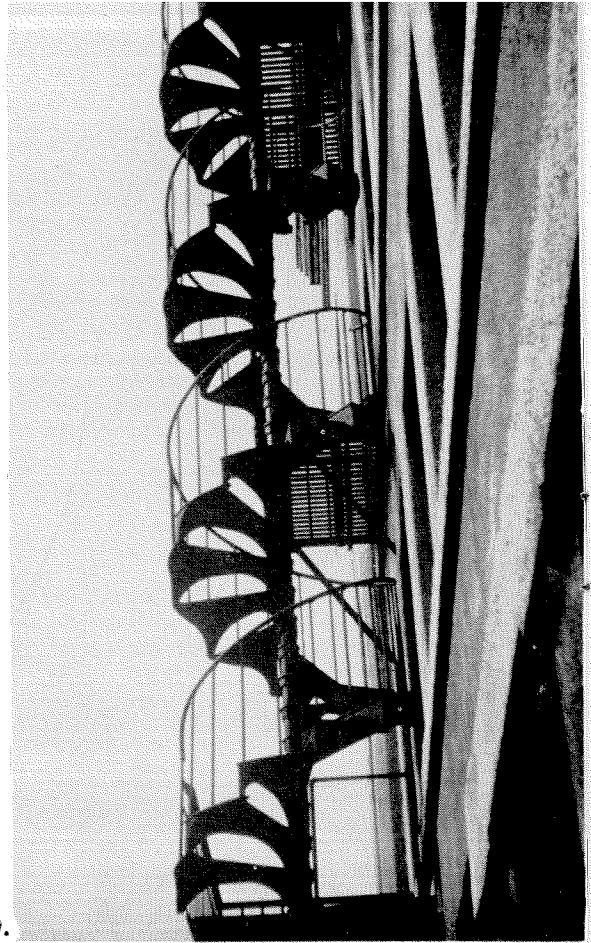


6.

7.

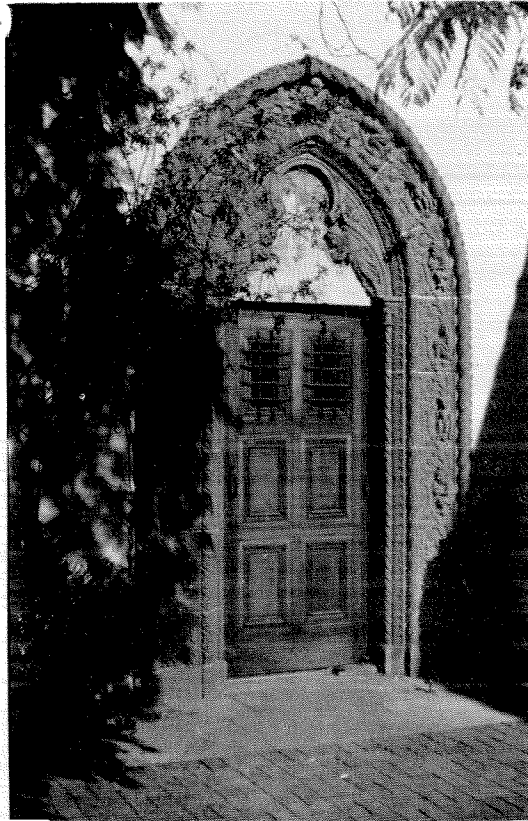


8.

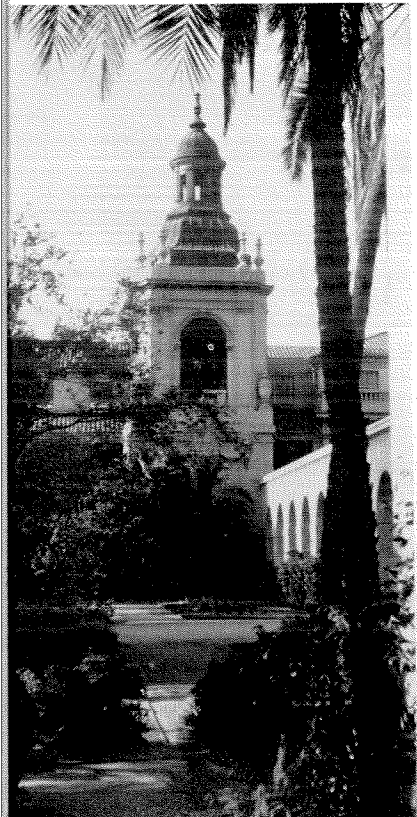


10.

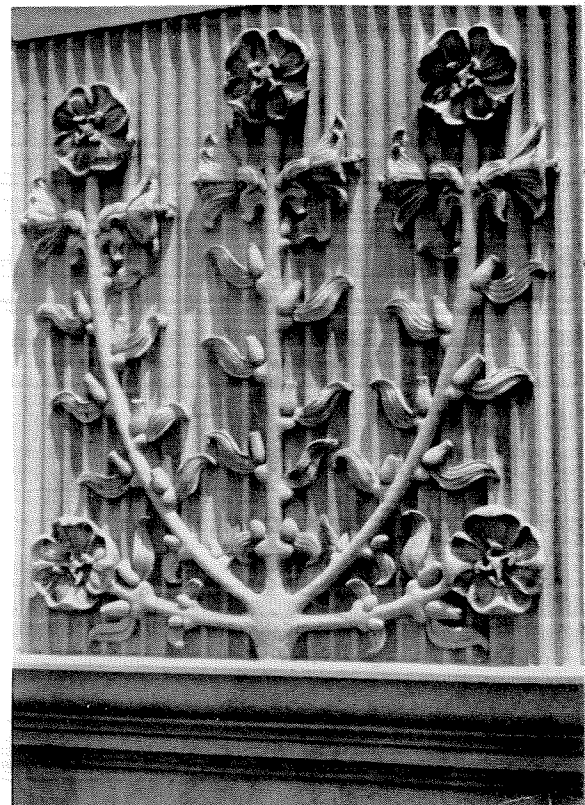
11.



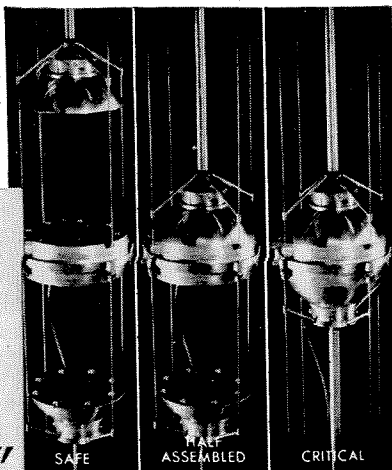
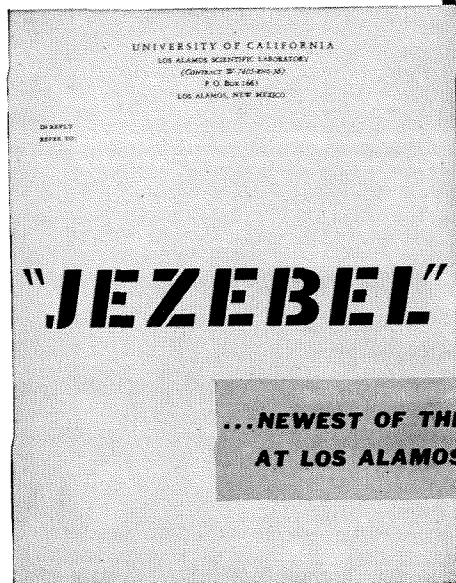
12.



13.



BARE PLUTONIUM SPHERE...



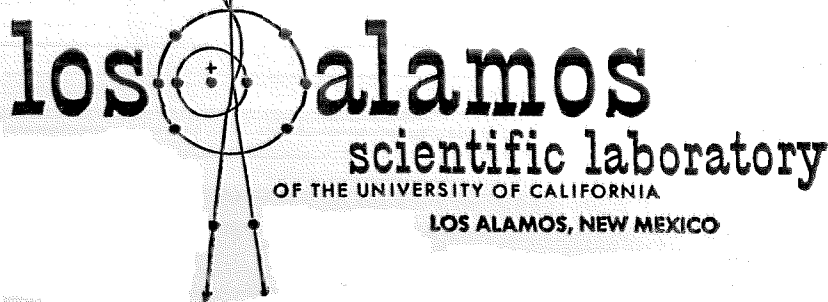
--where scientists and engineers, working with some of the Western World's finest equipment and facilities probe the unknown and seek answers to tomorrow's problems.

The Laboratory's program for pioneering in nuclear and thermonuclear power and nuclear propulsion, ranks in importance with the Laboratory's continuing and ever expanding achievements in atomic weapons research and development.

The delightful small city of Los Alamos is situated among the pines on the lower eastern slope of the towering Jemez Mountains—an ideal community and climate in which to live and raise a family.

For employment information contact your Placement Office or write

DEPARTMENT
OF
SCIENTIFIC PERSONNEL
Division 572



Answers to

A CALTECH QUIZ

(page 24)

1. This character decorates one of the pillars at the front entrance to Throop Hall; camera pointing east.
2. You are in Dabney Garden, behind the Humanities building, facing west.
3. This decoration (it's a plane) is beside the main (north) entrance of the Guggenheim Aeronautical Laboratory.
4. You are looking north, coming on to the campus from California Street. The High Voltage Lab is on the right.
5. You are looking northeast from the arch between the Synchrotron and the Central Shop. That's the side wall of the Synchrotron building in the background.
6. This decoration is on the north wall of the library annex of Kerckhoff (so close to the top of the building that Dr. Beadle had to photograph it by hanging from the roof on a rappel rope).
7. You are looking north, between East Bridge and the High Voltage Laboratory.
8. This is the Blacker House courtyard; camera pointing northwest.
9. The courtyard in front of the Astrophysics building. You are facing southwest, and the doorway is the east entrance to Mudd.
10. You are in the alley on the east side of Throop, facing south.
11. Ricketts House courtyard, looking north and a little to the east.
12. Just testing. This is the Pasadena City Hall. Off-campus.
13. This decoration is on the south side of Kerckhoff; it's a conventionalized evening primrose (*Oenothera* to geneticists, who have used it to study mutations).

ENGINEERING AND SCIENCE