

ALUMNI NEWS

Board Nominations

THE BOARD OF DIRECTORS of the Alumni Association met as a nominating committee on February 26, 1957, in accordance with Section 5.01 of the By-Laws. Five vacancies will occur on the Board at the end of the fiscal year, one vacancy to be filled from the present Board and four members to be elected by the Association. Present members of the Board and the years in which their terms of office expire are:

Robert H. Bungay '30	1957	Richard H. Jahns '35	1957
W. R. Donahue, Jr. '34	1957	Chester Lindsay '35	1958
John R. Fee '51	1958	W. F. Nash, Jr. '38	1957
E. P. Fleischer '43	1958	John E. Osborn '39	1958
Richard W. Stenzel '21	1957		

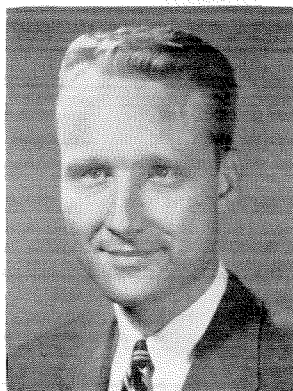
The following nominations have been made by the committee:

President—Willis R. Donahue, Jr. '34	(1 year)
Vice President—Edward P. Fleischer '43	(1 year)
Secretary—Donald S. Clark '29	(1 year)
Treasurer—George B. Holmes '38	(1 year)
Director—Frank C. Bumb '51	(2 years)
Director—L. Fort Etter '34	(2 years)
Director—John E. Fleming '46	(2 years)
Director—Nick T. Ugrin '34	(2 years)

Section 5.01 of the By-Laws provides that the membership may make additional nominations for the four (4) Directors by petition, signed by at least twenty-five (25) members in good standing provided that the petition is received by the Secretary not later than April 15. In accordance with Section 5.02 of the By-Laws, if further nominations are not received by April 15, the Secretary casts a unanimous ballot for the members nominated by the Board. Otherwise a letter ballot is required.

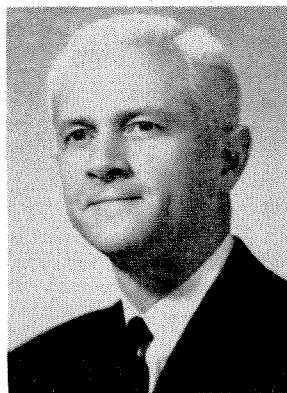
Statements about the four Directors who have been nominated are presented below.

—Donald S. Clark, Secretary

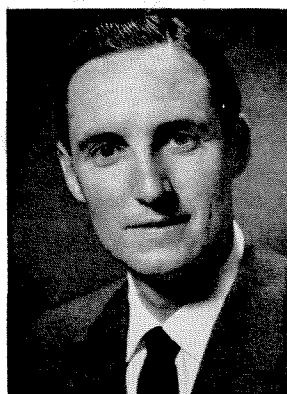


FRANK C. BUMB received his BS in mechanical engineering in 1951 and returned to Caltech for his MS in 1952. He then joined the Consolidated Electrodynamics Corporation in Pasadena as an assistant engineer. Just recently he was named supervisor of the company's electromechanical group. His professional activities include active participation in

the American Society of Mechanical Engineering, Sigma Xi, and Tau Beta Pi. He has served the alumni by working on the Seminar Day Committee in 1955, and, this year, as Alumni Program Chairman.



L. FORT ETTER received his BS in mechanical engineering in 1934 and his MS in 1935. He went to work for the Santa Fe Railway as an engineer in the engineering test department and, after four years, joined Preco Incorporated in Los Angeles. He is currently vice president of operations for this company, which produces specialty products in the road machinery, rail equipment and electronic fields. This year he is serving as chairman of Alumni Seminar Day.



JOHN EATON FLEMING received his BS in mechanical engineering in 1946 and followed this degree with an MBA in production management at Stanford in 1948. He then became administrative assistant for the General Tire and Rubber Company of California. In 1950 he joined the Clary Corporation in San Gabriel as production control supervisor, and last year he was appointed supervisor of financial planning. He has served the alumni as permanent secretary of the class of 1946, as a member of the 1954 Seminar Day Committee, and as chairman of the Picnic Committee in 1956.



NICK T. UGRIN received his BS in mechanical engineering in 1934 and went to work in the control laboratory of the Los Angeles Refinery of the Union Oil Company. He spent one year in the manufacturing department in various job categories and then transferred to the pipeline department. During World War II, he spent three years in the Navy, most of the time at staff headquarters in San Francisco, coordinating shipments of petroleum products for advance base movements and other military requirements in the Pacific. In 1953 he became assistant manager of the transportation and distribution department of Union Oil and he is now manager of the department.

CONTINUED ON PAGE 42

ENGINEERING AND SCIENCE

Disneyland Picnic

THE ANNUAL ALUMNI PICNIC will be held on Saturday, June 29, at Disneyland. A special area for the use of alumni will be set apart, with separate parking and entrance to the park. Caltech alumni will be one of the first groups to use the new picnic and play area now under construction, which will include tables, a baseball diamond, sand play area for the smaller children, and refreshment stands. Normal group prices will be charged—adults, \$3.00; children from 12 to 17, \$2.50; from 3 to 12, \$2.00; and children under 3, free. Get a group together! Plan now to attend!

—William Freed, chairman

General Hans Kramer

GENERAL HANS KRAMER, professor of military science and tactics at Caltech from 1920 to 1924, died at Letterman General Hospital in San Francisco on February 15. Born in Madgeburg, Germany, in 1894, General Kramer attended the University of Michigan and in 1918 graduated from West Point. In 1932 he received his PhD in engineering from the University of Dresden in Germany. After his retirement from the U. S. Army in 1945, he

entered business as a consulting engineer in San Francisco and was very active in Caltech's alumni chapter in that city. He had just been appointed consultant on the Feather River Project when he died.

1957 Directory


A NEW Caltech Alumni Directory has just come off the press and copies should reach all paid-up alumni by the end of this month. The new directory lists all names alphabetically, with home and business addresses, degrees and options—and contains a geographical listing as well. Richard Stenzel, '21, MS '30, was in charge of preparing the directory.

Among the Missing

THE ALUMNI ASSOCIATION is attempting to complete its file of Caltech publications and is still missing many early issues of the school's annuals. Has anyone got copies of the following publications which they would be willing to send to the Association?

- 1896 through 1912—THE POLYTECHNIC
- 1913 through 1920—THE THROOP TECH
- 1926 and 1927—THE BIG T

SIT BACK AND RELAX



Let Calmec Manufacturing Company Worry About Your Metal Parts and Products

We have the most modern facilities and most complete plant to give you the maximum of service, whether it is a small part, a large part, or a product from your ideas to the shipped article direct to your customers, under your name, from our plant.

CALMEC MANUFACTURING CO.
 Robert A. McIntyre, M.S. '38 Kimball 6204
 5825 District Blvd. Los Angeles 22, Calif.

see the man from Smoot-Holman first!...

TOMORROW'S LIGHTING TODAY



for the best in school, commercial and industrial lighting

No matter how difficult the illumination problem—the Smoot-Holman lighting expert is the man to see! Here is trained "know how" backed by Smoot-Holman's modern plant facilities and quality lighting equipment.

Call your local Smoot-Holman office or write direct. Ask to see the man from Smoot-Holman.









SMOOT-HOLMAN
 INGLEWOOD, CALIFORNIA
 We support the National Lighting Bureau

service in the west and southwest for all school, commercial and industrial lighting