



THE CAMPUS

Some samples from
a new collection of photographs

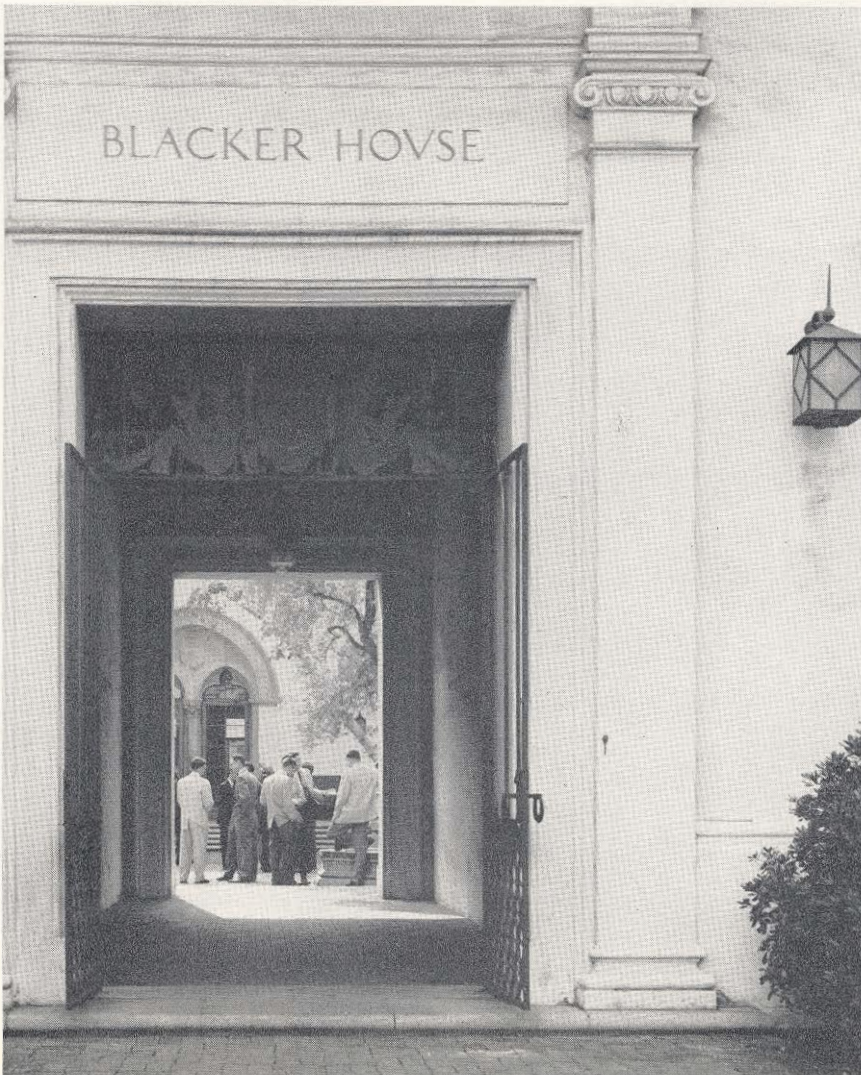
by THOMAS W. HARVEY

*Left: Throop Hall, oldest
building on the campus.*

*Below: Kerckhoff biology
laboratories.*

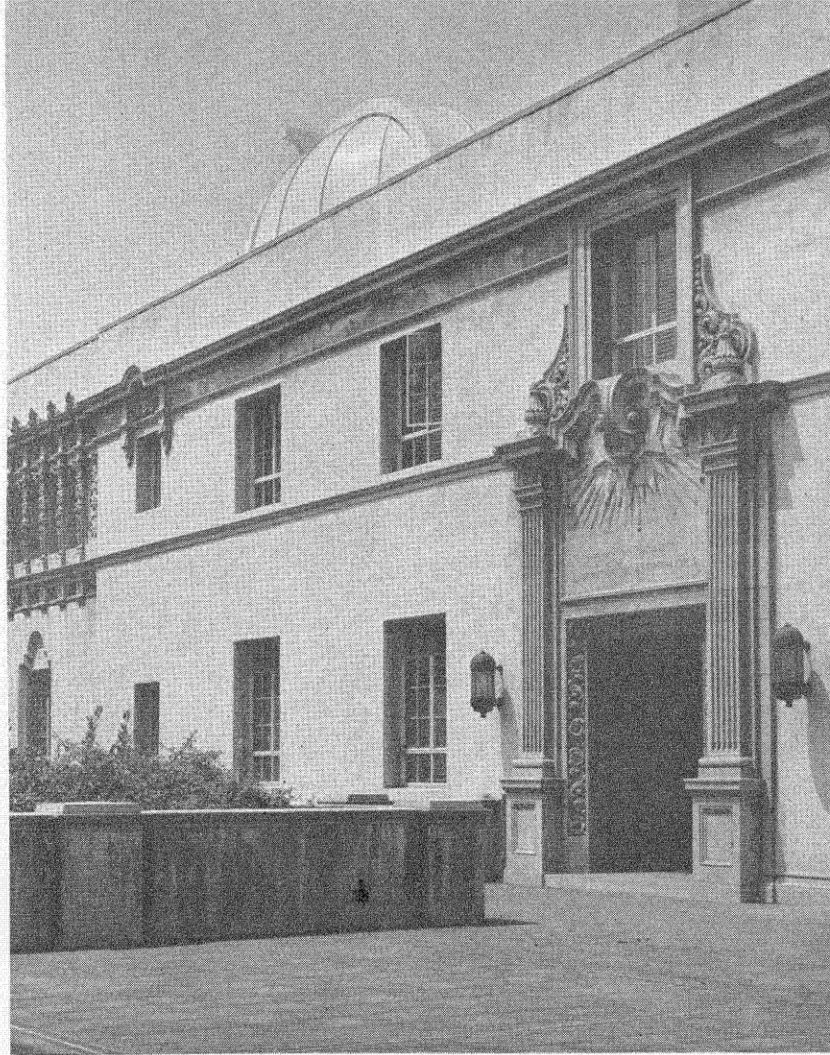


*Engineering building,
completed in 1950.*

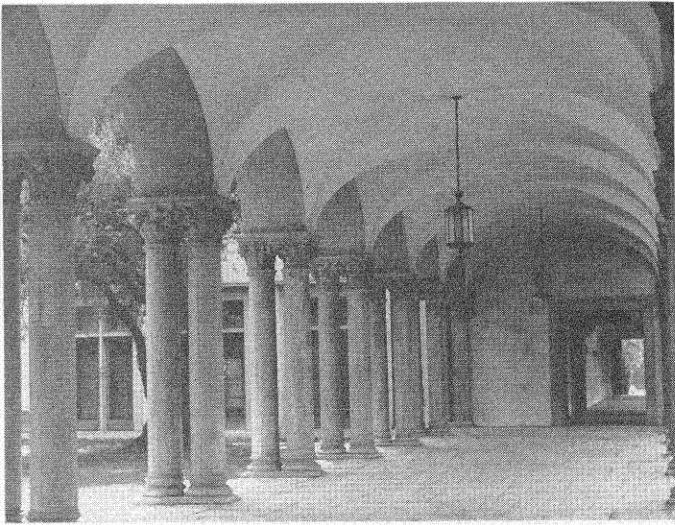


*Blacker, one of the four stu-
dent houses.*

*Robinson Laboratory
of Astrophysics.*



*Colonnade between Fleming
and Ricketts Houses.*



*Church Laboratory of
Chemical Biology,
dedicated in 1956.*