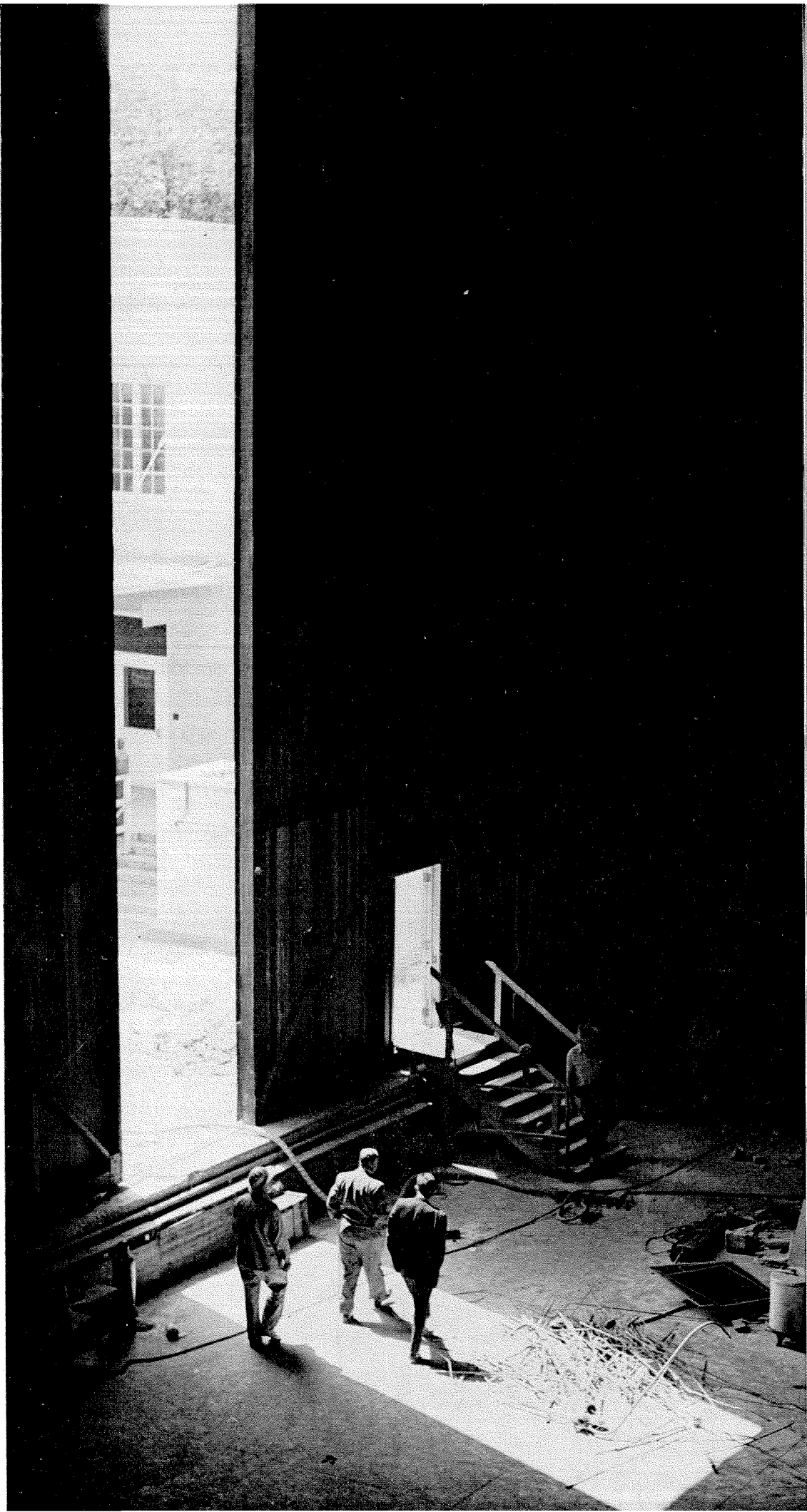
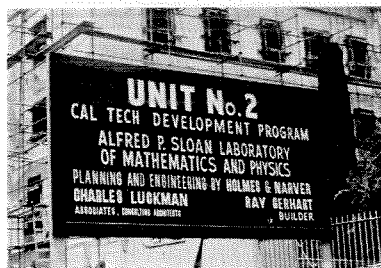


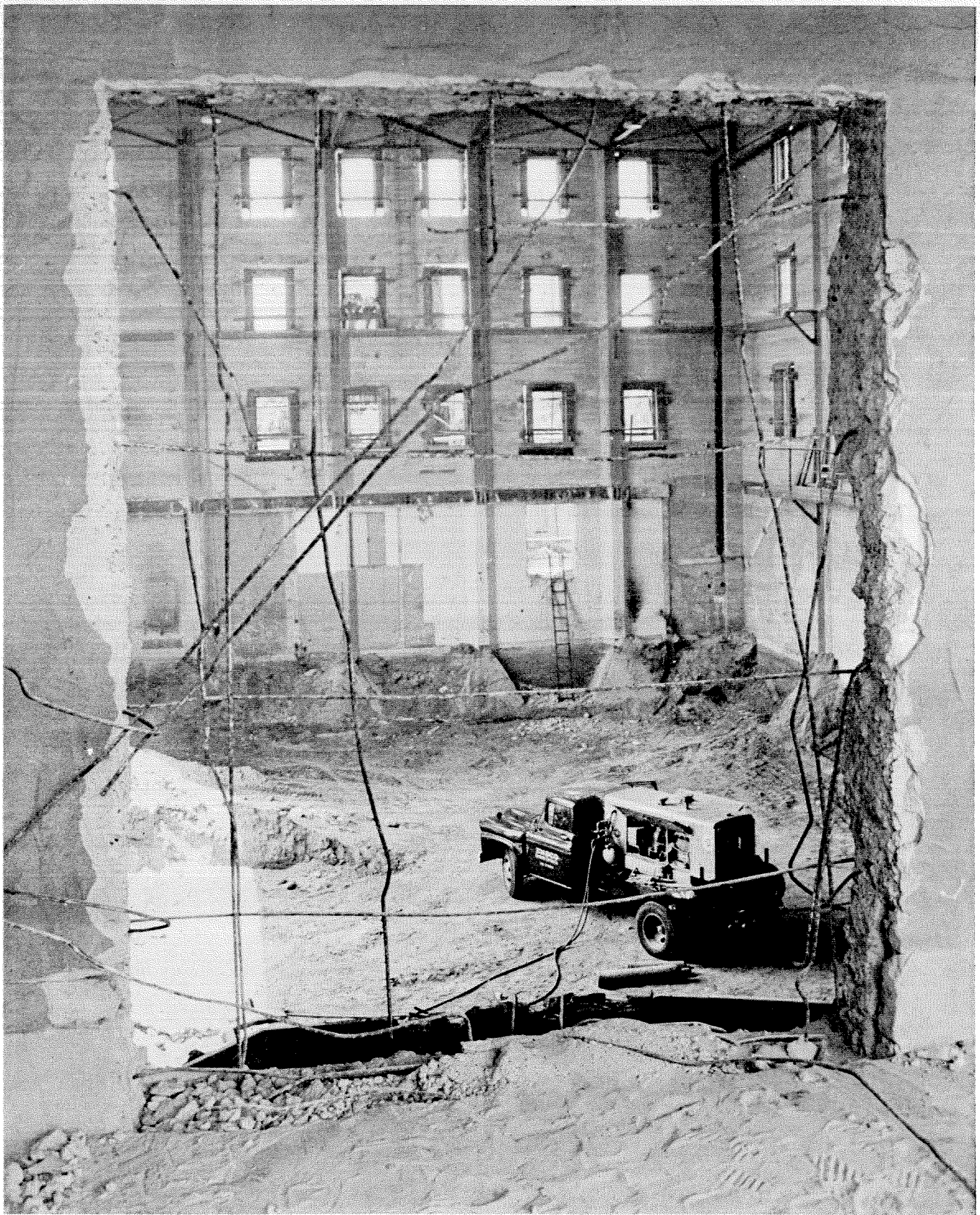
THE CHANGING CAMPUS

*The old High Voltage
Laboratory makes way
for a new mathematics and
physics building.*

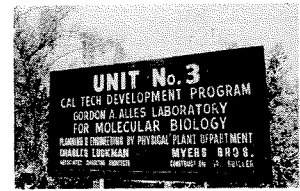
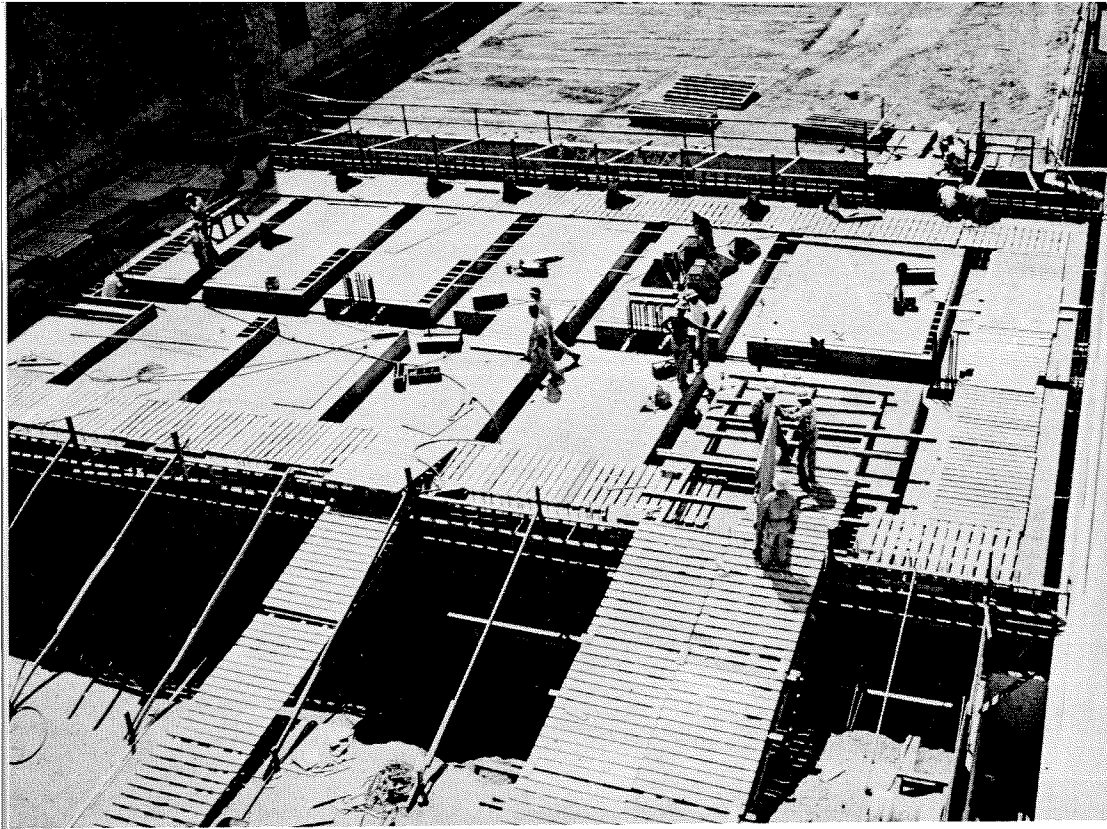




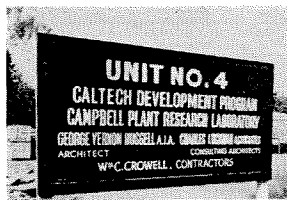
Caltech's Development Program calls for construction of 18 new buildings on the campus. Unit No. 1, the Physical Plant Building, on the north side of San Pasqual Street between Holliston and Chester Avenues, was dedicated in June. By then, the bulldozers, power shovels and cranes had moved onto the central campus to break ground for Unit No. 2.



Unit No. 2, the Alfred P. Sloan Laboratory of Mathematics and Physics, retains the shell of the old High Voltage Laboratory, but will become a five story (two floors below ground) structure with offices for faculty members and graduate students in mathematics, facilities for research in low temperature physics, and a new 10-million-volt Van de Graff accelerator to be used in research on the nuclear reactions of light elements.



Unit No. 3, the Gordon A. Alles Laboratory for Molecular Biology, unites the present Kerckhoff and Church Laboratories, providing space for research in virology, biochemistry, biophysics, immunology and psychobiology.



Unit No. 4, the Campbell Plant Research Laboratory, is an addition to the Dolk and Earhart Laboratories. It will provide 3,000 square feet of de-smogged, air-conditioned plant-growing space for studies of plant viruses and plant development problems.





Ground was broken in September for three new Student Houses and a Campus Coffee Shop, on the site of the "temporary" barrack buildings of World Wars I and II. The new Houses will be ready by the fall of 1960.



Unit No. 9, the W. M. Keck Engineering Laboratories, is located at Chester Avenue and San Pasqual Street, across from the present Spalding Engineering Laboratory. The new engineering building will provide facilities for teaching and research in sanitary engineering, hydraulics and water resources.

