

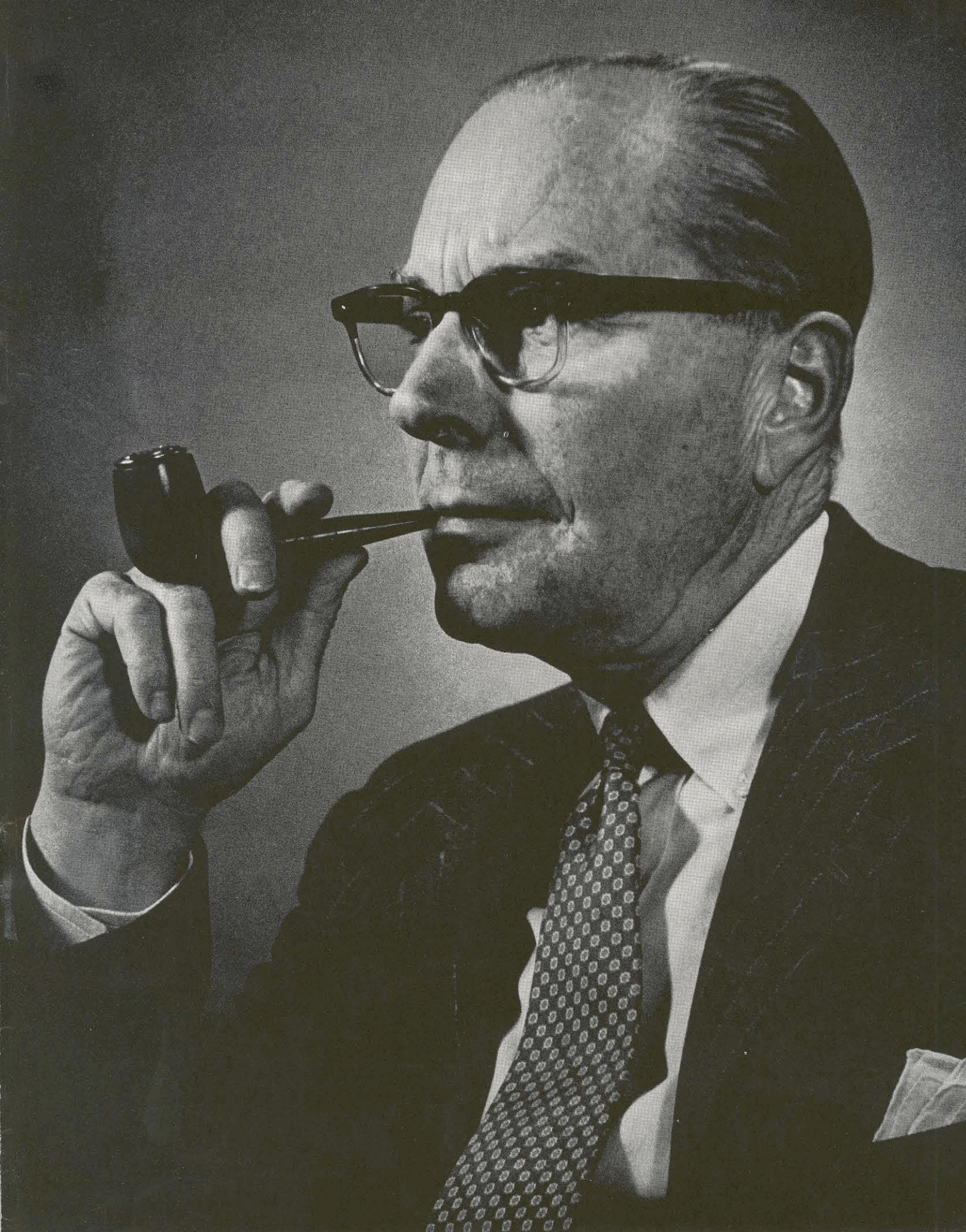
THE DEANS

A Portfolio of Portraits by Harvey

Caltech's five deans sit for their portraits on the following pages. The newest dean is George W. Beadle, who became acting dean of the faculty on January 1. He succeeds Earnest C. Watson, who has left the Institute to become scientific attaché to the United States Embassy in India. Like his fellow deans, Dr. Beadle adds administrative duties to an already full schedule. He is professor of biology and chairman of the division of biology at Caltech. L. Winchester Jones, Caltech's dean of admissions, is also director of undergraduate scholarships and associate professor of English. Paul C. Eaton, dean of students, is associate professor of English. Foster Strong, dean of freshmen, is assistant professor of physics. H. F. Bohnenblust, dean of graduate studies, is professor of mathematics.



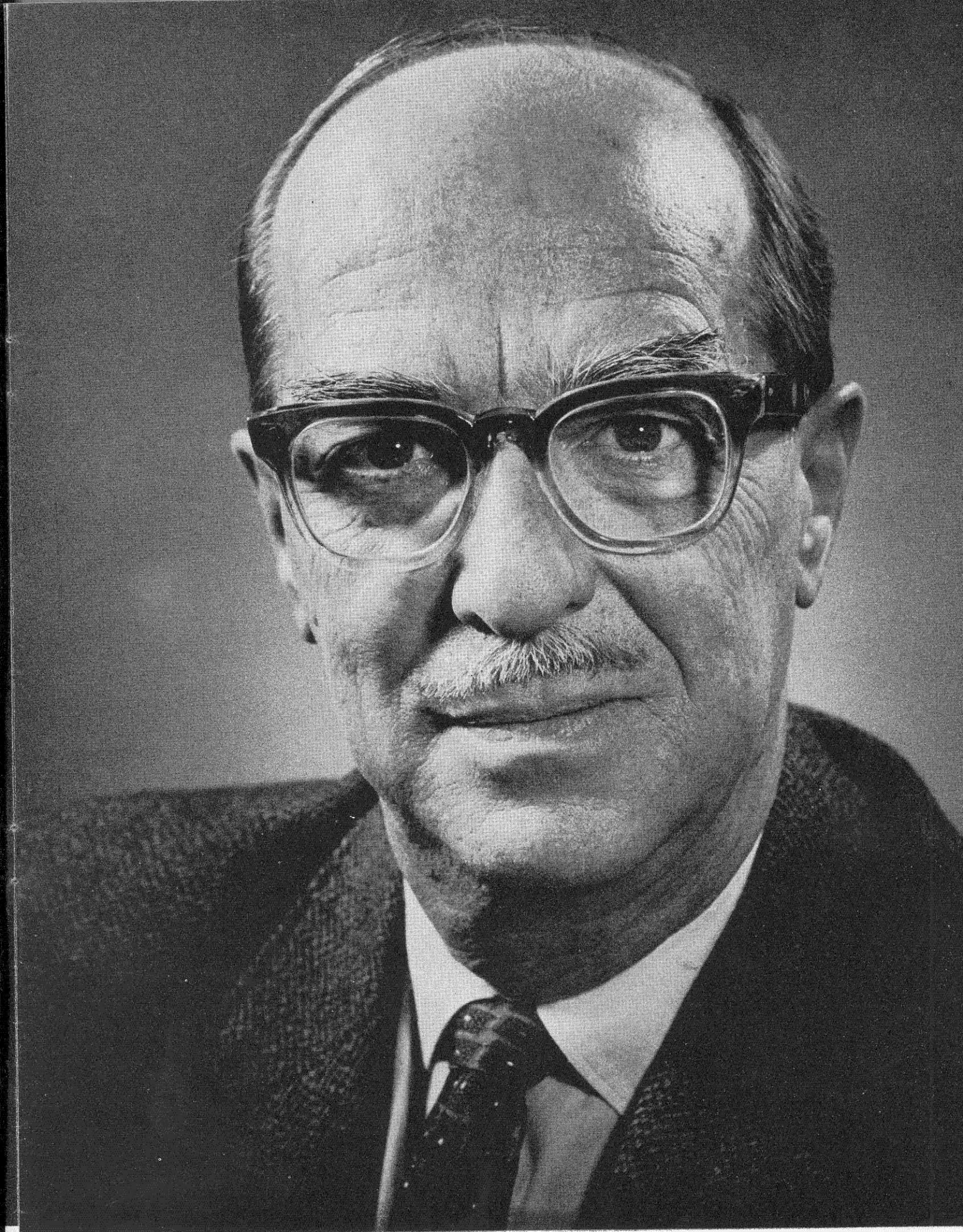
George W. Beadle, acting dean of the faculty



L. Winchester Jones, dean of admissions



Paul C. Eaton, dean of students



Foster Strong, dean of freshmen



Frederic Bohnenblust, dean of graduate studies