

FIRESTONE FLIGHT SCIENCES LABORATORY



Dedicating the new Firestone Laboratory — Leonard K. Firestone, president of the Firestone Tire & Rubber Company of California; President DuBridge; J. E. Trainer, executive vice president of Firestone; and Clark Millikan, director of Caltech's Graduate Aeronautical Laboratories.

The Month at Caltech

Firestone Laboratory

The Firestone Flight Sciences Laboratory, which provides the Institute with new facilities for studying problems in space technology, was dedicated on February 5.

The five-story structure, the latest addition to the building complex of Caltech's Graduate Aeronautical Laboratories, was made possible by a gift of \$1,050,000 from the Firestone Tire & Rubber Company.

"It is particularly fitting that this building be dedicated for use in flight sciences," said Leonard

K. Firestone, president of the Firestone Tire & Rubber Company of California, "because Caltech produces some 20 to 25 percent of all the PhD's in aeronautics in this country . . . Caltech graduates hold key positions in the research and manufacturing centers that have made southern California preeminent in aeronautics and space technology."

The new 30,000-square-foot laboratory will be used chiefly for studies of missiles and high speed aircraft structures, solid propellants for rockets, fatigue and cracking of metals, flutter and vibration of thin-walled structures, gas flows at very high speeds and temper-

continued on page 30

atures, and advanced mathematical investigations in fluid and solid mechanics.

Leaders of America

The Rt. Rev. James Pike, J.S.D., S.T.D., Bishop of the Diocese of California of the Protestant Episcopal Church visits the Caltech campus from February 13-15 as the first guest in this year's Leaders of America program, sponsored by the Caltech YMCA.

The Leaders of America series is designed to bring outstanding individuals to visit with Caltech students on an informal basis. During his stay on campus, the guest meets with students in classes, group discussions, and public meetings. He lives on campus and eats in the student houses.

Bishop Pike is a graduate of the University of Southern California, where he received his LLB in 1936. He was admitted to the bar of the State of California in 1936 and practiced law until 1942, when he made the decision to become a student of theology at the Virginia Theological Seminary. In 1944 he was ordained deacon of the Protestant Episcopal Church, and served as curate of St. John's Church in Washington, D.C. He was Episcopal Chaplain at Vassar College from 1947 to 1949, and from 1949 to 1952 was head of the department and professor of religion at Columbia University. From 1952 to 1958 Bishop Pike was Dean of the Cathedral of St. John the Divine in New York City, and in 1958 he became Bishop of the Diocese of California.

Bishop Pike is the author of *A Roman Catholic in the White House*, *If You Marry Outside of Your Faith*, and *The Church, Politics and Society*.

The second visitor in the Leaders of America program will be Sydney Hook, chairman of the graduate division of philosophy at New York University, who will be on campus from April 11-13.

Faculty Changes

Robert C. Jahn, assistant professor of jet propulsion, has resigned from Caltech to be assistant professor of aeronautical engineering at the Forrestal Research Center at Princeton University.

Maurice Levy, professor of theoretical physics at the University of Paris, and director of the Laboratory of Theoretical and High Energy Physics at Orsay, France, is at Caltech for a year as visiting professor of theoretical physics.

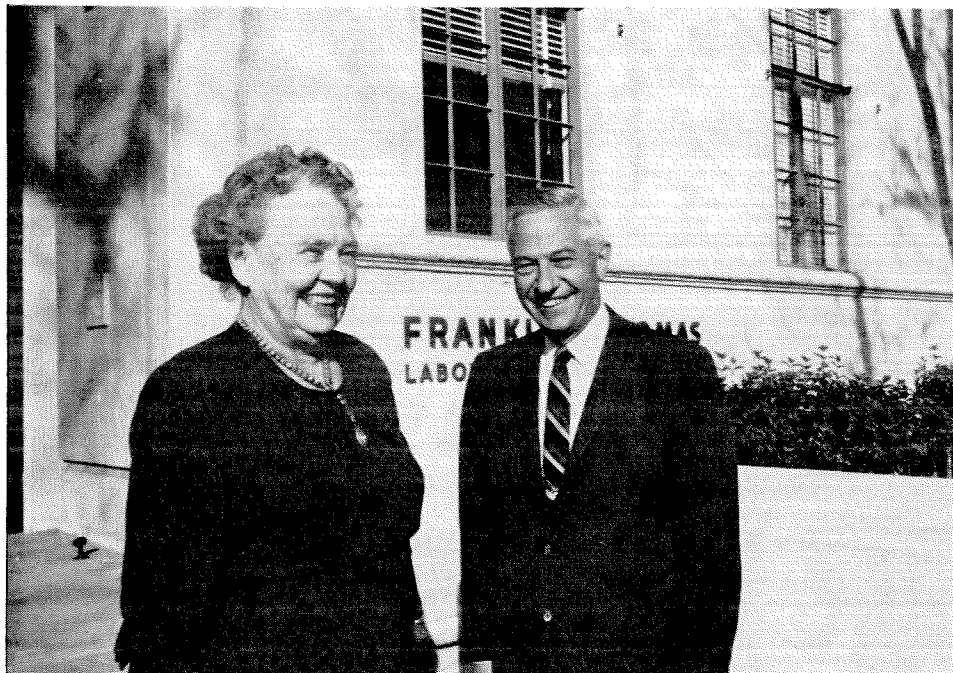
Charles R. McKinney, senior research fellow in geology, has left the Institute to become a senior engineer at the Consolidated Electrodynamics Corporation in Pasadena.

Ray C. Owen, who has been serving as acting chairman, has been appointed chairman of the biology division of the Institute.

Honors and Awards

Ian Campbell, chief of the California Division of Mines and Geology, and research associate of the division of geological sciences at Caltech, will receive the Hal Williams Hardinge Award of the American Institute of Mining, Metallurgical, and Petroleum Engineers on February 20 at the Institute's 91st an-

continued on page 32



THOMAS LABORATORY

Mrs. Franklin Thomas and President DuBridge give official recognition to the newly-designated Franklin Thomas Laboratory of Engineering. The five-story engineering building, constructed during and just after World War II, has been renamed in honor of the late Dean Thomas, authority on water supply, Pasadena civic leader, and professor of civil engineering at Caltech for 39 years.

nual meeting in New York. The award goes to Dr. Campbell as: "Eminent scientist, author, educator, and administrator; for his personal warmth, outstanding leadership, and devoted service to the profession." Dr. Campbell was a member of the Caltech faculty from 1931 to 1959.

Cushing Strout, associate professor of history, has been appointed Whiton Visiting Professor for 1962-3 at Cornell University in Ithaca, N.Y.

Fritz Zwicky, professor of astrophysics, has been elected a member of the new International Academy of Astronautics. Theodore von Karman, Caltech professor of aeronautics, emeritus, is director of the academy.

Michael T. Wermel

Michael T. Wermel, research associate in economics and insurance in Caltech's Industrial Relations Center since 1955, died of a heart attack on February 6 in Hawaii. He had been on a leave of absence from the Institute since 1960 to serve as professor of economics and dean of the school of business of the University of Hawaii in Honolulu.

A graduate of New York University in 1931, Dr. Wermel received his PhD from Columbia University in 1939. He was with the Inter-Allied Control Council of the military government in Germany in 1946-7, and had taught at Brooklyn College, American University in Washington, D.C., Tufts University in Medford, Mass., and the University of California at Berkeley. Dr. Wermel is survived by his wife and two daughters.

Lecture Series

Two Caltech scientists will be featured speakers in the Los Angeles County Museum's Second Annual Science Lecture Series: Richard P. Feynman, Richard Chace Tolman Professor of Theoretical Physics, who will speak on "The Law of Gravitation" on March 28; and Allan R. Sandage, staff member of the Mount Wilson and Palomar Observatories, on "Age and Evolution of the Universe" on April 18. The series gets under way on February 21 when Harold Urey of the University of California at La Jolla speaks on "The Origin of the Solar System," and concludes with a talk by Gordon Macdonald of UCLA on "Tides, Time, and Ptolemy" on May 16.

**YOUR
FIRST
JOB
COULD
BE
YOUR
LAST**

If you liked it enough to stay. But studies show us that the average engineer or scientist switches jobs four times in his career. This usually means four moving vans, four houses, four new schools, four times your subscriptions get lost and four new sets of friends to break in. ○ At Jet Propulsion Laboratory, chances are you'll keep your friends and subscriptions intact. JPL, you know, is operated by Cal Tech for the National Aeronautics and Space Administration. It's kind of a super graduate school where a lot of talented people are designing the instrument-packed spacecraft that will explore our Moon and the planets. ○ It's fascinating work. With boundaries as wide as space itself. And for many of the people that work here now, it was their first job. And their last. ○ If you're interested in basic and applied research, send a resume with full qualifications and experience to JPL, Pasadena, Calif. ○ "An equal opportunity employer."

JET PROPULSION LABORATORY 
4800 OAK GROVE DRIVE, PASADENA, CALIFORNIA
Operated by California Institute of Technology for the National Aeronautics & Space Administration