

PERSONALS

1919

EDWARD T. VAN DEUSEN died September 9 in San Diego, following a long illness. He was 69. In 1947 he retired from the insurance business in Los Angeles to live on his mountain ranch near Julian. Van Deusen was one of the 100 qualified Marine flyers in World War I, and became a flight instructor during World War II. He is survived by his wife, Paulina, a daughter, and four grandchildren.

1920

MARK A. SAWYER died in June after a long illness. He lived in Laguna Beach, where he retired in 1961 after a 40-year career with the Pacific Telephone and Telegraph Company. Sawyer, who was protection engineer at the time of his retirement, had for many years been active in the American Institute of Electrical Engineers. He leaves his wife, Ruth, and one son.

1926

JEN-CHIEH HUANG writes that he had "the great fortune" to be back on the Caltech campus last August after 40 years. Huang is president of the China Merchants Steam Navigation Corp. in Taipei, Formosa, and has a daughter majoring in physics at Tunghai University in Taiwan.

1927

MARSHALL A. BALDWIN sends word that he will retire this month from the Standard Oil Company of California, after 38 years with the organization. He began as cost analyst at the Richmond, Calif., refinery and retires from his position as benefits advisor in the personnel department. Baldwin and his wife plan to travel and, he reports, to attend the 40th class reunion at Caltech next June.

1928

CHARLES F. LEWIS, who has been chief metallurgist for the Cook Heat Treating Co. in Houston since 1936, has been installed as a trustee of the American Society for Metals. In 1964 he was cited by the society as "Texas Metals Man-of-the-Year" in recognition of his leadership in the city's metalworking community, his outstanding contributions to education, and his participation in ASM since 1929.

1929

JAMES C. SCULLIN died on September 12 in Glendale at the age of 59. He was president and owner of the Cardinal Machine Company, which he started 30 years ago. Scullin began his career as a design engineer with the Hughes Tool Co. and

became head of the New Departure Bearing Company's southern California division before forming his own company. He leaves his wife, Beatrice, two sons, a daughter, and three grandchildren.

1932

J. WILFRED PATTERSON, PhD, died on September 25 at the Palo Alto-Stanford Hospital. A self-employed consulting engineer, he had lived on the peninsula for the past 16 years. He is survived by his wife, Helene, a son, two daughters, and five grandchildren.

JOSHUA L. SOSKE, MS, PhD, '35, executive head of the department of geophysics at Stanford, died on October 18 after a brief illness. An internationally known consulting geophysicist, Soske had been at Stanford since 1951. From 1935 to 1951 he was president and chief geophysicist for the Geophysical Engineering Corp. in Pasadena and had been on the Caltech faculty before that time. He had also served as a professional advisor to the Philippine government, oil companies, research laboratories, and engineering firms. Soske is survived by his wife, Helga, three daughters, and two sons.

JAMES C. MOUZON, PhD, professor and director of the college of engineering Brazilian program at the University of Michigan, recently received an honorary doctor of science degree from Southern Methodist University—one of 14 alumni to be so honored at the school's 50th anniversary celebration. Mouzon has been at Michigan since 1957, served as associate dean of engineering from 1960 to 1966, and was director of the Ford Foundation-sponsored engineering faculty development program.

1933

DONALD F. POULSON, PhD '36, is on sabbatical leave from Yale University and will be in Canberra, Australia, conducting research on physiological genetics of *Drosophila* at the Institute of Entomology, CSIRO. He plans to return to New Haven in September 1967.

WILLIAM W. MOORE, MS '34, senior consulting partner in the San Francisco office of Dames & Moore, has been elected to the board of direction of the American Society of Civil Engineers representing southwestern United States and Hawaii.

1935

NORWOOD L. SIMMONS JR., MS, has been appointed manager of product planning for the Eastman Kodak Company's motion picture and education markets di-

vision in Rochester. He has been with Kodak since 1937, most recently as marketing director of the New York City region. Simmons, his wife, Helen, and their five children have moved to Rochester.

1938

MUNSON W. DODD, MS '46, who has been an engineer with the Metropolitan Water District of southern California since 1946, has been named principal engineer for the civil and structural sections.

1942

EVERETT P. TOMLINSON, PhD, a member of the research staff of the Forrestal Research Center in Princeton, N.J., represented Caltech in the academic procession of the 200th anniversary convocation of Rutgers University in New Brunswick on September 22.

1943

NORMAN NEWSOME JR., MS, has been named advisor to the operations manager of Esso Exploration, Inc., in New York City. He and his wife and five children have moved from New Orleans, where he has been production engineer for the Humble Oil & Refining Company. Both organizations are affiliates of the Standard Oil Company of New Jersey, for which Newsome has worked since 1946.

1944

ALFRED G. KNUDSON JR., MD, PhD '56, has been selected as a professor of medicine and a member of the planning team for the new \$161 million Stony Brook Medical Center on Long Island, N.Y. He will be involved in the basic academic planning that will determine the direction of the program and character of the facilities of the center, and will teach the basic life sciences to graduate students when the center begins its programs in the early 1970's. Knudson was formerly chairman of the department of biology at the City of Hope Medical Center in Duarte, Calif.

ROBERT NAHAS, president of the Peralta Land Company in Castro Valley, Calif., has been praised for his part in the new \$30 million Coliseum project in Oakland by *The Sporting News*, October 1, 1966, "If you had to limit credit for the . . . Coliseum to one man you doubtless would settle on Coliseum, Inc.'s president, Robert T. Nahas."

TEDDY F. WALKOWICZ, MS, an associate of the Rockefeller Family & Associates of New York City, has been elected

a director of the Cerro Corporation in New York City.

1945

MARK M. MACOMBER, a commander in the U.S. Navy, writes that he received his PhD in June from Ohio State University in Columbus. He was assigned to the surveys and basic data office of the Defense Intelligence Agency, Mapping, Charting, and Geodesy Directorate in Washington, D.C. The Macomers have two sons and a daughter.

1947

FRANK R. BOWERMAN, MS '48, has joined the Aerojet-General Corporation as assistant to the vice president—development. He was formerly assistant chief engineer for the Los Angeles County Sanitation districts and 1965 winner of the American Public Works Association award for noteworthy achievements in sanitation.

JERRY DONAHUE, PhD, has been appointed professor of chemistry at the University of Pennsylvania. He goes to Philadelphia from the University of Southern California, where he has been chairman of the department of chemistry since 1963 and on the faculty since 1953.

1948

MAX GARBER has been elected vice president, marketing, at Huggins Laboratories, Inc. in Sunnyvale, Calif. He has been director of marketing for the company. Garber and his wife, Lorraine, and their two daughters live in Sunnyvale.

1949

DANIEL T. FINKBEINER II, PhD, chairman of the department of mathematics at Kenyon College in Ohio, was recently guest speaker for a mathematics colloquium at Miami University in Oxford, Ohio. Finkbeiner has been on the Kenyon faculty since 1951 and before that taught at Yale. He is vice chairman of the Ohio section of the Mathematical Association of America.

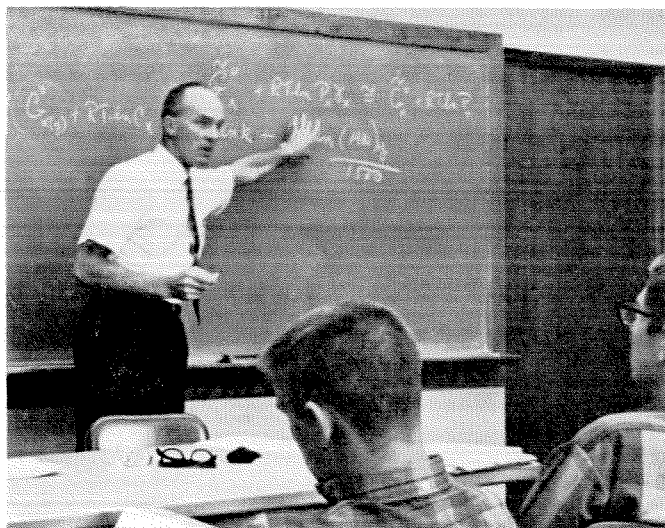
HARRY GRUENBERG, PhD, is in Denmark at the Laboratory of Electromagnetics Theory (associated with the Technical University of Denmark) on a Fulbright research grant. He and his wife plan to return to Syracuse, N.Y., next June.

1951

RAYMOND A. SJODIN, MD, a member of the faculty of the University of Maryland's School of Medicine, has recently been promoted to professor of biophysics. Sjodin is responsible for the discovery of basic mechanisms underlying the electrical activity of nerve and muscle cells.

continued on page 43

CALTECH IS TEACHING



“ . . . the best educational experience

remains

the stimulation of new ideas in

the student's mind

by the words of a teacher.

The idea may be a new concept,

or a new system for association of concepts,

or a feeling of empathy for

a professor's own involvement in his work.

This coupling of minds in action

can never be mediated by

machines, visual aids,

or digests of knowledge.”

—GEORGE S. HAMMOND

Arthur Amos Noyes Professor of Chemistry

Support Your 1966-67 Caltech Alumni Fund

Personals . . . continued

1956

G. LOUIS FLETCHER, MS '57, has been named district engineer for the San Bernardino Valley Municipal Water District. He will be involved in an accelerated program of ground water basin study and in all phases of engineering work for the district. Fletcher was formerly with the Hydro Conduit Corporation in Azusa.

1959

ROLF ENGLEMAN JR., PhD, has a year's leave of absence to study molecular spectroscopy at the National Research Council of Canada in Ottawa. He is with the Los Alamos Scientific Laboratory.

1961

HENRY ARCHER THIESSEN, MS '62, has joined the staff of the Los Alamos Scientific Laboratory in New Mexico as an experimental physicist in the medium energy physics division. He recently completed the requirements for a PhD at Caltech which he will receive in June.

1962

JOHN GOLDEN and his wife announce the birth of their first child, James Harris, on August 2. John is a member of the applied mathematics research group at the RCA Laboratories in Princeton, N.J. He writes that JOHN WILKINSON '61, PhD '65, visited him recently and is now at the University of Waterloo in Ontario, Canada, for his second year as assistant professor of mathematics.

1964

RONALD G. FINDLAY and his wife, Lynda, recently completed 10 weeks' training at Lincoln University in Pennsylvania for the Peace Corp Volunteers and have been assigned to British Honduras.

1965

VERNON L. BLISS has been commissioned a second lieutenant in the U.S. Air Force and has been assigned to the University of Oklahoma in Norman for training as a weather officer.

1966

SUSAN KAYSER, PhD, the first woman to receive a PhD in astrophysics from Caltech, has joined a research team at the Belfer Graduate School of Science at Yeshiva University in New York, where she will be working with A.G.W. Cameron, professor of space physics.

ROBERT A. SCHAAR, who died in a drowning accident in Pasadena in July, has had a book collection established in his memory by his classmates. His own books will form the nucleus of the collection and will be augmented by gifts from his family and friends.

November 1966



THE
'SCOPE
WITH THE
HIGH
IQ*

RCA WO-91B...
* INEXPENSIVE QUALITY

Why pay for Oscilloscope capabilities you don't really need?

There are many situations—production line work, product quality checks, basic laboratory measurements—that require a large number of scopes or employ standard measurements... and where simplicity of operation is essential.

That's where you need the RCA WO-91B!

Of course the so-called "industrial/laboratory" type scopes will make certain measurements that ours won't. They may feature triggered sweep, horizontal deflection in microseconds, and other costly refinements. Whenever you need these extras... capability for those extremely precise measurements... spend the money and buy an expensive scope.

Actually, for many very precise research, experimental and lab measurements, we don't even recommend ours (we use theirs).

But if your requirements call for scopes with characteristics such as the following, the RCA WO-91B is probably your best buy:

- Built-in voltage calibration—large 5-inch screen with VTVM-type voltage scales for fast, simultaneous peak-to-peak measurements and waveshape display
- Flat response (± 1 dB) from 10 cps to 4.5 Mc
- 0.018 rms volt per inch maximum sensitivity for use at low signal levels
- Continuously adjustable (to 100 kc) sweep oscillator with excellent linearity
- Z-axis input for direct modulation of CRT permitting use of timing and calibration markers on trace
- Provision for connecting signals directly to the vertical deflection plates of the CRT.

The Optional User Price of the RCA WO-91B is \$249.50. It is available locally from your Authorized RCA Test Equipment Distributor. Ask to see it or write for complete specifications to RCA Commercial Engineering, Section K163W, Harrison, N.J.

RCA ELECTRONIC COMPONENTS AND DEVICES



The Most Trusted Name in Electronics