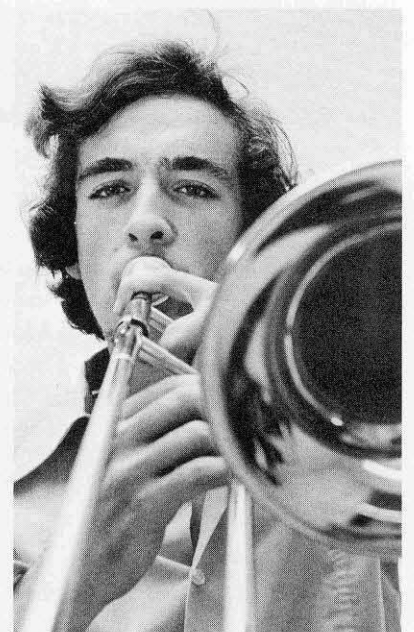
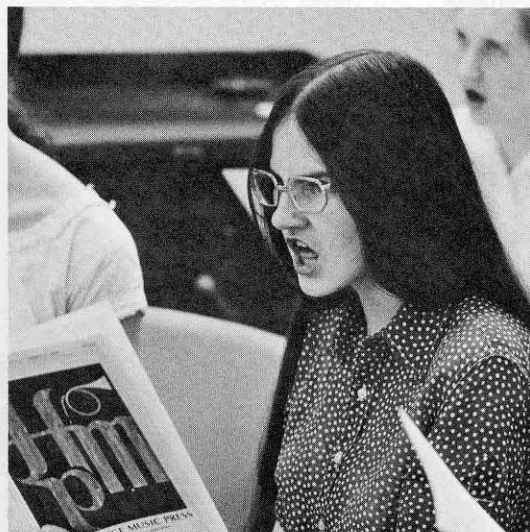


# An Outburst of Music



Caltech students have always had a special affinity for music, and the Institute has always encouraged this interest by sponsoring a smorgasbord of musical activities. This year, though, it's more like a ten-course dinner. A musical explosion seems to have occurred on the campus. More students are making more music in more different groups than ever before. For instance—



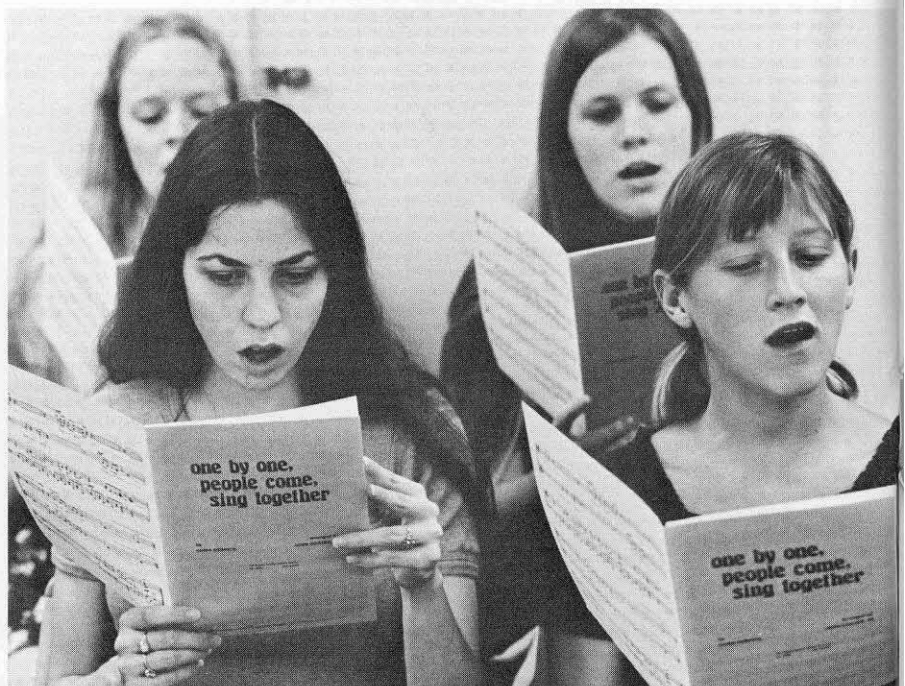
### Piano Man

James Boyk, a young Los Angeles concert pianist, is spending a day a week on campus this term, as Artist-in-Residence, giving private lessons and conducting a master class in piano.



### Women's Glee Club

Caltech's Men's Glee Club (*E&S*—October 1973) is still one of the best in the business, but a Women's Glee Club and the Chamber Singers, under the direction of Monica Roegler, are moving in on it. The Women's Glee Club has 20 members; the Chamber Singers is a mixed chorus, with 16 singers from the larger glee clubs.





### **Chamber Music**

Violinist Alice (left) and cellist Eleonore (above) Schoenfeld started chamber music classes at Caltech last fall. They chose almost 40 students through auditions, divided them into eight ensembles of varying size, and worked with them in weekly sessions throughout the year. The performers—who include undergraduate and grad students, faculty, staff, and their families—gave their first concert early this month.



## An Outburst of Music... continued

### Kiss Me Kate

After daily rehearsals for almost a month, the ASCIT musical, *Kiss Me Kate*, played to sold-out houses for two nights in April. Probably the most ambitious, and certainly the most sophisticated, musical yet attempted by the undergraduates, the show employed the talents of 40 undergraduates—including a few ringers from the Caltech staff and from nearby Occidental College.



### Wind Ensemble

Under the direction of James Rotter, a concert saxophonist, the old Caltech Band has grown into a Wind Ensemble (shown here in full dress for the annual concert on May 4). On occasion, the group splinters into a clarinet quintet, a flute ensemble, a trombone quartet, a brass ensemble, or a jazz band. About 40 students, faculty, staff, and family members play in the Ensemble.