

## PERSONALS

**I**T WILL be helpful if readers will send personal items concerning themselves and others to the Alumni Office. Great interest has been shown in these columns, but more information is required. Do not hesitate to send in facts about yourself, such as change of position or location, present job, technical accomplishments, etc. Please help.

—Editor.

1918

NOEL PIKE, employed in Mexico for several years, has returned to the United States to accept a position with the Imperial Irrigation District at Imperial, Calif.

JOSEPH HARTLEY passed away on Wednesday, July 18, after a prolonged illness. Death was due to heart trouble.

Ex. '18

CAPTAIN FREDERIC A. MILLERD was recently made commanding officer of the 34th Bombardment Group and is stationed in East Anglia, England.

1922

HAROLD R. HARRIS (A.A.F.) recently received the rank of brigadier general. Prior to the war, General Harris was head of Pan-American Grace Airlines in South America and came back during the war to be commissioned in the Air Transport Command.

LINNE C. LARSON is a captain in the corps of engineers stationed in Los Angeles

with the district engineers, U. S. Engineer Department.

1925

LAWRENCE P. HENDERSON is sales engineer for Lincoln Electric Co., which supplied welding equipment and materials for use in the war. Lawrence lives in Berkeley, Calif., and is the father of six children.

ALBERT FERKEL is in charge of operation of a plant of the Atlantic Refining Co. producing 100 octane gasoline. Albert is unmarried and lives in Port Arthur, Tex.

CARYL KROUSER is a newspaper publisher—publishing the "Barstow Printer Review." In 1941, he was a major in the Army, stationed at Ford Ord.

ALLYN W. BLUNT who is on leave of absence from his position with the Los Angeles County Flood Control District, is a Lieutenant-Commander in the Navy now serving in the Pacific area.

NEAL D. SMITH is city manager of the City of Ontario, Calif.

JAMES E. MOORE is manager of the economic research department of the United Air Lines, Inc., at Flossmoor, Ill. In 1942, Mr. Moore served as expert consultant on air transportation services and supply, U. S. Army, Washington, D. C.

GEORGE C. SPELMAN is general superintendent, New Orleans division, of the Standard Dredging Corp., New Orleans, La.

PAUL C. RIVINIUS is a public accountant for Price, Waterhouse & Co., of Los Angeles, Calif.

1927

LIEUTENANT-COLONEL ARTHUR H. WARNER, head of the technical section of the air defense S.H.A.E.F., received the Legion of Merit. Lieutenant-Colonel Warner, an associate professor of physics, is on leave from the Los Angeles campus of the University of California.

1930

J. R. LESTER BOYLE, city engineer of Laguna Beach, Calif., for the last six years, has resigned. Mr. Boyle intends to open an office in Santa Ana as consulting engineer.

RALPH L. LUPHER is professor of geology at Washington State College, Pullman, Wash. He has added some courses in military work to his regular curriculum and has been spending his summers on strategic mineral work in the State of Washington.

1932

THOMAS CLEMENTS is professor of geology and head of the department at the University of Southern California, Los Angeles.

ALEX CLARK is division geologist for the Shell Oil Co. at Ventura, Calif.

E. N. HARSHMAN and Mrs. Harshman were liberated internees from Los Banos

★

**SYNCHRONOUS MOTORS**  
• 3600 R.P.M. . . . down to  
1 revolution every 30 days.

**ELECTRIC SWITCHES**  
• Operated by Cold, Heat,  
Vacuum . . . Humidity,  
Pressure as well as Man-  
ually Controlled.

**INTERVAL TIMERS**  
• Electrically Operated.

**ELECTRIC FURNACES**  
• Electrically operated for  
Scientific Heat Treating  
purposes.

**VALVES—FLUID—VAPORS**  
• Electrically operated for  
Water, Oil, Gas, etc.

You can get it at ANDREWS

## A "MECCA" OF ODD ITEMS AND SIZES

. . . Whether Hypodermic tubing (down to .002)  
. . . or Bi-metal (Thermostat metal) . . . an odd-  
size screw . . . a delicate timing device . . . the  
immediate need, perhaps, of a gear from our stock  
of some 3,000 sizes and styles . . . or, any one of a  
hundred "hard-to-find" items that could build itself  
into a "bottleneck" of supply . . .

Andrews attention and facilities have been directed  
to supplying the odd . . . the "hard-to-find item"  
. . . since 1903.

**A N D R E W S**  
**H A R D W A R E & M E T A L C O .**

334 SO. MAIN STREET

LOS ANGELES 13

★ The hard-to-find Item Is Easy to Find at ANDREWS

camp in the Philippines in late February. They are in good health, considering the meager diet of small portions of daily rice and some few vegetables grown on the internment grounds.

J. W. PATTERSON moved his consulting work from El Paso a year or two ago in order to help develop the black sand deposits on the Oregon coast. At present, he is working for the Joshua Hendy Iron Works at Sunnysvale, Calif.

FRED B. PHLEGER, JR., is continuing as professor of geology at Amherst College, Amherst, Mass., but on a part-time basis and is spending the rest of his time in co-operative work with the Navy through the Woods Hole Oceanographic Institute.

B. HENRY POWNALL, since May first, was promoted to chief industrial application engineer of the York Corporation at York, Pa. Mr. Pownall is also owner of a chain of locker plants.

#### 1937

CAPTAIN LUIS E. KEMNITZER gave up his consulting practice as a petroleum geologist in Los Angeles in order to accept a commission as a Civil Affairs officer in the Army. After completing training in Michigan and graduate work at Stanford, Captain Kemnitzer went overseas about a year ago and at present is reported to be about ready to take over the administration of some portion of Germany.

JOHN P. KLOCKSIEP announces the birth of a daughter, Bonnie Ann, on May 19.

W. C. PUTNAM is on leave from his position as assistant professor of geology at University of California, Los Angeles, to serve with the military geology unit of the U.S.G.S. He acted as consultant for the Mindoro invasion, recommending the placing of air strips and routes for the landing beaches. For the success of this work, Dr. Putnam won special commendation from Major General William Dunckel, commander of the Mindoro task force.

DR. ROBERT W. WEBB, of the geology department of the University of California, Los Angeles, has been in charge of A.S.T.P. courses at that institution.

#### 1938

PHILIP IVES is a research associate in the biology department of Amherst College, Amherst, Mass.

JAMES R. BALSLEY, after dividing his time for several seasons between the Alaskan branch of the U.S.G.S. and the Carnegie Geophysical laboratory, is now on full time with the section of Military Geology of the Geological Survey, Wash.

GARN A. RYNEARSON, whose business address is Grants Pass, Ore., is working on lead-zinc of Oregon and Siskiyou County, Calif., for the U.S.G.S.

#### 1939

JOHN A. BATTLE is forecasting weather for the U.S.A.A.F. and Pan American Airways at Guatemala City, Guatemala, C. A.

DELOS FLINT recently has been commissioned second lieutenant following his graduation from the Field Artillery Officer Candidate School at Fort Sill, Okla. Delos spent part of his academic leave in July visiting friends at the Institute and then returned to Fort Sill to receive an overseas assignment.

#### 1941

LIEUTENANT STANLEY J. MITCHELL, Air Forces, is at present stationed at Scott Field, Ill. Prior to entering service, he was designer-engineer for Westinghouse, then in charge of a laboratory at Wright Field. Lieutenant Mitchell was recently home in Southern California on a 30-day furlough. Late in the fall, he expects to receive an overseas assignment where he will be in charge of communications.

THOMAS HASSARD, R.A.F., is a leading aircraftsman (ground crew) stationed in India, near the border of Iran.

#### 1942

CHIEF RADIO OPERATOR HENRY ROESE, U.S.M.S., took advantage of his 30-day furlough at home to work out a number of times with the Caltech baseball squad.

LIEUTENANT ROBERT ANDERSON, U.S.N.R., after 30 months active duty in the South Pacific, returned to Washington, D.C., for several months before returning to the Pacific.

LIEUTENANT (j.g.) WILLARD P. FULLER, U.S.N.R., resigned from Basic Magnesium, Inc., in the spring of 1944 to enter the Navy and is now in the Pacific theater of operations.

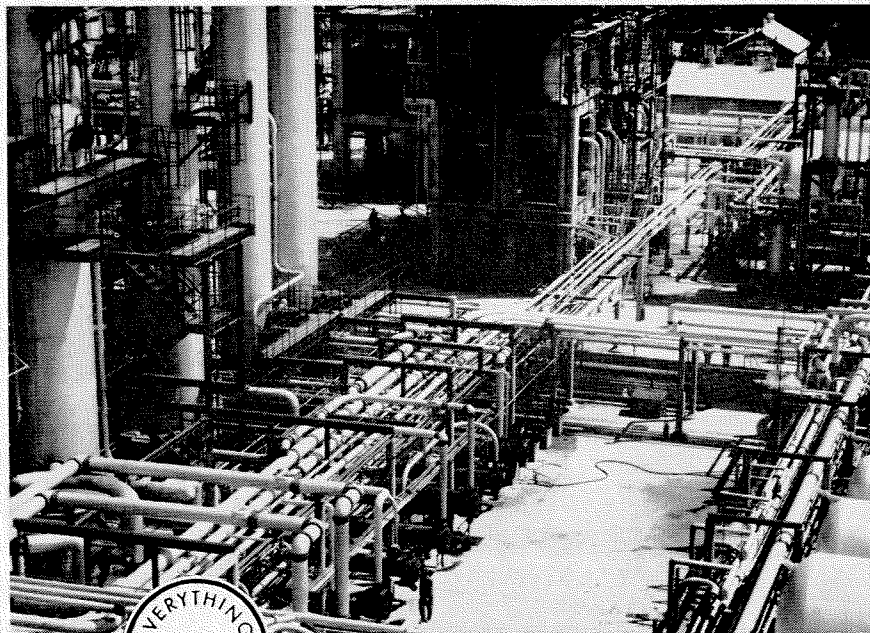
BENJAMIN HOWELL completed his work with the Navy Radio and Sound Laboratory in San Diego in December, 1944, and is now with United Geophysical Corp. in Pasadena. Ben has a daughter, Barbara Carolyn, 15 months of age.

LIEUTENANT H. W. MENARD, U. S. N.R., has seen action on many fronts. In the early stage of the war, he was in the Southwest Pacific area, then assigned to the European theater; recalled to Wash-



## 100+ INSULATION FOR 100+ JOBS

Over \$175,000,000 in Refineries have been insulated by Marine using the best Johns-Manville materials.



# Marine

## ENGINEERING & SUPPLY CO.

941 EAST SECOND ST. • LOS ANGELES • MICHIGAN 8071



# These are our most important trains

**Red Crosses and Medical Corps** insignia mark the most important trains on Southern Pacific today... *the hospital trains.*

These are the trains of mercy that carry the most important passengers any train ever had—sick and wounded service men, overseas veterans home for hospitalization; skilled doctors, and hard-working nurses and medical corpsmen.

Handling these trains is an especially great responsibility—because Southern Pacific is called upon to move many of the Pacific war casualties who are returned here. (We serve Pacific Coast ports from San Diego to Portland.)

The hospital trains come first. They are the most important trains on S.P. or any other railroad... and that's the way we know you want it to be.



# S·P

The friendly Southern Pacific

ington for a few months and then reassigned to the Pacific. The nature of his work is photo interpretation.

WALTER TOVELL is associated with the Standard Oil Company in Alberta, Canada. In October of last year, Mr. and Mrs. Tovell announced the birth of a daughter, Marianne.

GORDON K. WOODS is chief marine engineer for Kaiser Company, Inc., at Richmond, Calif.

1943

LOUIS J. REGAN, JR., is with the Texas Co. and alternates between work in the Northwest in the summer and the Los Angeles area in the winter. He is the proud father of three children and dares anyone in his class to match his record.

RICHARD H. JAHNS has been with the pegmatite section of the U.S.G.S. for the past two years or more, working first in New Mexico and more recently in North Carolina where he is in charge of exploration for mica.

ROBERT GREENWOOD is a geologist with the British Colonial Geological Service, working in Nigeria. In a letter, Bob describes the plateau as comparable to Western Texas. He is hoping, after his 18 months assignment, to be able to return to the States and acquire a Ph.D.

1944

STEPHEN W. DANA accepted a position with Standard Oil Company of California as a combination geologist-geophysicist in February of this year. Mr. Dana's home is in Everett, Wash.

ENSIGNS BOB FREEMAN, PHIL ADAMS, EARL FISCHER AND CARL COULSON attended communications school at Harvard. Freeman, Adams and Fischer were transferred to San Diego prior to duty overseas.

AHMED CEBECI, after receiving his Master's degree from the Institute in June, 1944, has returned to Turkey where he is working for his government.

MARTIN J. STEWART, after completing midshipman school at Columbia University and specialized work at Miami, is now overseas in the Pacific area, serving as an ensign on a destroyer escort. Martin states that the heat of the Mojave Desert is nothing compared to some places he has been.

FERNANDO NIERI expects to return to his home in Lima, Peru, sometime during this summer, taking home his bride, formerly Anita Sievert, whom he married on March 11.

THOMAS E. HUDSON has been given a medical discharge from the Navy. Tom was in midshipman school at Columbia University where he received his commission as ensign. On departure for overseas duty, he became ill and was sent to the U. S. Naval Hospital at Oakland, Calif., for three and one-half months. Tom plans to come back to the Institute to study for his Master's degree.

RICHARD H. LOCKETT is a test engineer for General Electric Co., Schenectady, N. Y.

Ex. '44

JAMES F. DRAKE left the Institute in May, 1943, to enter the Army Air Forces, and is now a first lieutenant, stationed on Tinian in the Marianas. Jim is a squadron flight engineer and has completed 17 missions over Japan.