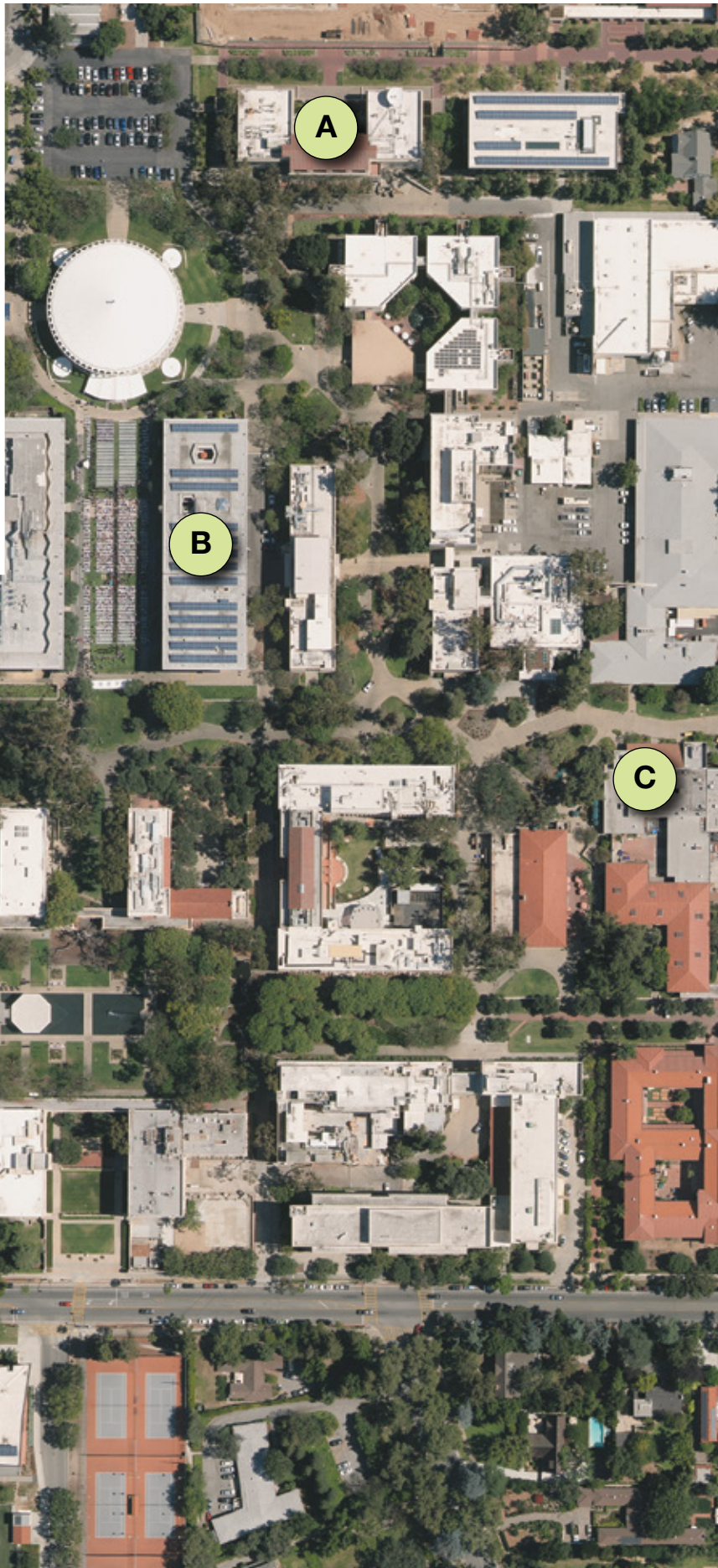


ROOFTOPS of Caltech

Of all the fascinating research, communication, and innovation that take place on campus, some of the most interesting are hidden—often in plain sight—where most members of the community never go: on the rooftops of campus buildings. Here, we catalog a few of Caltech’s notable building superstructures and reveal what they do.



A Moore Laboratory
Radio Telescope

The Caltech Radio Frequency and Microwave Group uses the six-meter telescope atop Moore Laboratory for educational purposes as well as to test amplifiers, feeds, spectrometers, software, and receivers.



B Baxter Hall (and other locations)
Solar Panels

About 5,000 solar panels—located atop Baxter Hall, campus parking structures, and other buildings—provide the campus with 1.9 gigawatt-hours of electricity per year.



C Chandler Café
Rooftop Aeroponics Towers

The aeroponics garden is now providing fresh herbs and vegetables for use at Chandler Café, reducing produce purchase and improving the facility’s carbon footprint by creating a roof-to-table supply chain.



D Millikan Library
Earthquake Shaker

A synchronized vibration generator, or “shaker,” is installed on the roof for forced vibration tests to simulate the effects of earthquakes.



E Cahill Center for Astronomy and Astrophysics
Rooftop Observatory

The Cahill Rooftop Observatory includes permanent 8-, 10-, and 14-inch Celestron telescopes, which can be coupled with a camera.



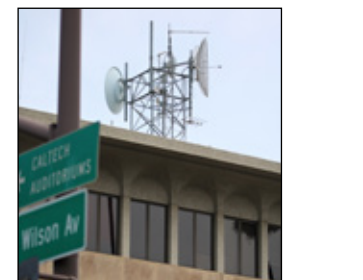
F Linde + Robinson Laboratory
Coelostat

The white dome atop Linde + Robinson houses a coelostat (SEE-luh-stat), a solar observatory that uses mirrors to project an image of the sun down to the main lobby.



G South Mudd
Antennas

The microwave and radio antennas atop South Mudd receive seismic data from scores of Caltech/USGS monitoring stations across Southern California.



Read more about Caltech’s rooftop structures at magazine.caltech.edu/post/rooftops