

# ALUMNI NEWS

## ALUMNI ASSOCIATION OFFICERS

<b>PRESIDENT</b> W. M. Jacobs '28	<b>SECRETARY</b> D. S. Clark '29
<b>VICE-PRESIDENT</b> H. B. Lewis '23	<b>TREASURER</b> H. R. Freeman '25
<b>BOARD OF DIRECTORS</b>	
J. R. Bradburn '32	J. W. Lewis '41
E. R. Hoge '18	W. B. Miller '37
A. L. Laws '26	F. T. Schell '27
W. D. Sellers '25	

## ALUMNI CHAPTER OFFICERS

### New York Chapter:

<b>PRESIDENT</b> Bell Telephone Labs., Murray Hill, N. J.	H. E. Mendenhall '23 Summit 6-6000
<b>VICE-PRESIDENT</b> The Texas Co., 205 E. 42nd St., New York 17, N. Y., MU 9-7700	Clifford C. Burton '40
<b>SECRETARY-TREASURER</b> Otis Elevator Co., 260 Eleventh Ave., New York 1, N. Y., CH 4-8000	Richard T. Brice '37

### San Francisco Chapter:

<b>PRESIDENT</b> 2226 McGee Avenue, Berkeley 3, California University of California Chemistry Department	Ted Vermeulen '36 THornwall 3475 ASHberry 6000 E
<b>VICE-PRESIDENT</b> 1431 Park Blvd., San Mateo, California, Tel. San Mateo 3-7634 Standard of California	Robert P. Jones '35 Tel. SUtter 7700
<b>SECRETARY-TREASURER</b> 5800 Buena Vista Ave., Oakland 11, California, Piedmont 8672-M Standard Oil Refinery, Richmond, California, Tel. RICHmond 7800	John C. Harper '40

The San Francisco Chapter meets weekly for lunch at the Fraternity Club, 345 Bush Street, on Thursdays.

## RAYMOND O. CATLAND

RAYMOND O. Catland '15 died in Boston in November. Prior to his death, Catland was an engineer with the Union Twist Drill Co., Athol, Massachusetts, working on the development of new carbide tools. He also served the Company on several special engineering assignments.

From January 1944 to December 1946, Catland was in charge of the W.P.B. project for the study of carbide milling at M.I.T. Approximately \$350,000 was spent by the project to determine the fundamental factors involved in milling steel and dural with carbide tipped tools. Previous to this work, he was with the Engineering Department of Lockheed and Vega Aircraft Companies, where he was responsible for much of the early development of carbide milling.

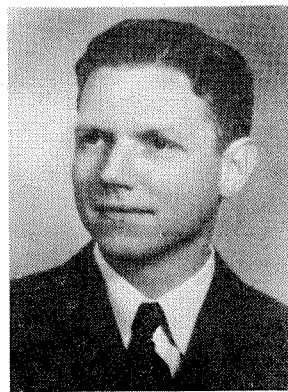
## CHEMISTRY GRADS LISTED IN A.C.S. SECTION POLL

"CHEMICAL Bulletin," of the Chicago Section, American Chemical Society, listed in its November issue six C.I.T. men among the "ten ablest chemists and chemical engineers" now working in the United States in each of 20 specialized fields. Don M. Yost '26, professor of inorganic chemistry at the Institute, was listed in the Inorganic Chemistry classification; Charles

D. Coryell '32, Ph.D. '35, professor of chemistry at M.I.T. was named to the Nucleonic Group; Linus Pauling '25, chairman of the Institute Chemistry Division, and K. S. Pitzer '35 of the University of California, were ranked as top-flight physical chemists; A. R. Kemp '17 of Bell Telephone Laboratories, Rubber Chemistry; and R. E. Rundle '41 of Iowa State College, was included in the Starch Chemistry classification.

Those honored were selected as the result of a reader poll, with each reader voting in his own field of chemical activity. In an editorial, the "Bulletin" stated that: "So far as we know, this is the first time chemists and chemical engineers have received public recognition based entirely on fellow-specialists' appraisal of their scientific work."

## JAMES H. JENNISON '35 WINS WELDING AWARD



JAMES H. JENNISON '35 was announced winner of a \$2000 second place award in the Design-For-Progress Award Program sponsored by the James F. Lincoln Arc Welding Foundation, the first of November. Jennison, the head of the Development Engineering Section of the U. S. Naval Ordnance Test Station in Pasadena, described the design and construction of a movable bridge of 300 ft.

span for Naval Ordnance testing facility. The bridge is supported on a float at one end and on a carriage traveling on a 45° slope at the other end. In a comparison of welded and riveted designs, a saving of \$90,000 was indicated by welding.

Jennison received his B.S. degree in 1935 and the M.S. in 1936, both in civil engineering. For seven years he was a civil engineer in the Bridge Department of the California Division of Highways. As head of the Development Engineering Section, he supervises the designing and development of ordnance devices and testing facilities in the field of underwater ordnance.

## PRECEDENT SET AS ALUMNI MEETING SPEECH BROADCAST

HIGHLIGHTED by the speech of California's Lieutenant Governor, the December 4 meeting of the Alumni Association also inaugurated short talks by faculty members on current Institute activities. Another feature of note was the transcription and subsequent broadcast of Lieut. Gov. Goodwin J. Knight's speech, "American Comes of Age."

Biology Professor George Beadle was introduced to the alumni by President Mort Jacobs. Dr. Beadle, chairman of the Division of Biology since July 1946, is considered one of America's best biochemists.

A short talk on "Current Engineering Interests at the Institute" by Professor Frederick Lindvall '28, chairman of the Division of Civil and Mechanical Engineering and Aeronautics, was a feature of the meeting which, it is anticipated, will be repeated in the future. Dr. Lindvall's discussion is reported in some detail in the C.I.T. News section on page 9.

President Jacobs introduced George Whitworth '20,

who arranged this meeting. Mr. Whitworth presented Lieut. Gov. Knight.

Knight reviewed the growth and character of early political leadership in America and contrasted it with that new leadership which has arisen in our country within the last few decades.

Before 1900 it was the lawyer, he pointed out, who, by reason of his training, knew the "rules" of politics and was the dominant figure in public life. Beginning in the 1890's, however, the growing necessity for specialization on the part of lawyers required that they devote more time than before to their field and less to politics.

A simultaneous renewal of interest by the general public in civic and governmental affairs brought about a new leadership in which all classes, professions, trades, and businesses took a strong and active part.

This alertness of the general population to every new law and decision, to every new political and social movement, has erected one of the greatest bulwarks against the growth of Communism, Fascism, Naziism, or any other totalitarian and anti-American philosophy in our country.

Lieut. Gov. Knight's talk was transcribed and broadcast the next day, Friday, December 5 by Pasadena station KWKW.

#### FRED PETERSON '27 DISCUSSES JOB HUNTING

ARRANGED by the Alumni Placement Service, H. F. Peterson '27 discussed placement opportunities and the technique of applying for a job at an evening meeting December 10. Peterson, manager of the Surveying and Drafting Departments of the Shell Oil Co.'s Los Angeles Office, has had a great deal of experience in hiring engineers.

#### DONALD R. THOMPSON '27 GETS CITRUS EXCHANGE PROMOTION

DONALD R. Thompson '27 has recently been appointed assistant manager of the California Fruit Growers Exchange Products Department. Thompson joined the Exchange's Research Department immediately after his graduation in chemical engineering. In 1929 he transferred to the Sales Division of the Products Department and since that time has held the positions of assistant to the manager and Western Division manager in charge of all citrus product sales in the 11 western states.

Thompson is very well known for his valuable contributions to the food processing industry, and holds many patents in the food technology field.

#### CALTECH-OXY ALUMNI LUNCHEON A SUCCESS

TWO days before the Tech-Oxy football classic on October 24, about 80 sideline quarterbacks representing the two schools met for luncheon at the Pasadena Athletic Club and threw both orchids and bricks at each other. Dr. Lee A. DuBridge of CalTech and Dr. R. E. Fitch, faculty dean of Occidental standing in for President Coons, served as moderators while Coaches Roy Denis of Oxy and Mason Anderson of Tech convinced all present that their respective teams didn't stand a chance. A color picture of last year's U.C.L.A.-Illinois Rose Bowl game brought an end to the verbal gridiron antics.

## With the Board

HOWARD Lewis '23 and Joe Lewis '41 are making considerable progress in organizing the Alumni Fund Campaign. Although active work on solicitation of contributions has not begun, the publicity so far given the plans has resulted in several contributions. But Howard and Joe are doing a lot of organizing, lining up men from all classes to help in seeing all alumni. Many men remember vividly the persistent plea for a gymnasium when they were undergraduates and are glad to become a part of an organization to provide that long-standing need. If you are asked to help solicit or to contribute, pitch in generously and repay part of your debt to Tech by aiding those now there.

\* \* \* \* \*

A couple of months ago it was reported in this column that Earl Burt '15 was completing the Manual of Operations. We regret to report now that Earl has had to give this up for reasons of health. We are glad, however, to announce that another hard worker and dependable alumnus, Carl Friend '38, has taken over and again predict the job will be done soon.

\* \* \* \* \*

Doug Sellers '25, director in charge of membership, announced at a recent meeting of the Board that membership in the Association is now greater than at the same time last year. It appears that some of the recent growth is attributable to the most recent reminder which was sent in October with a copy of the November issue of *Engineering & Science* to non-member alumni. He believes, however, that many potential members are just waiting for a personal reminder from a member and he hopes that you will suggest to your eligible friends that they too sign up.

\* \* \* \* \*

Jim Bradburn '32 told the Board at the November meeting that the Directory would probably be ready for distribution by early spring. In order to reduce expenses it is planned to have only an alphabetical listing. Experience has shown that this is by far the most used listing and it is felt that little will be sacrificed by omitting the geographical and class year listings. Be sure you and your friends have sent in their questionnaires properly filled in. If you've lost the questionnaire, just write your name, class, addresses, occupation, and employer's name on a penny postcard and send it to the Alumni Office marked "For the Directory."

H. K. F.

Silverplating — Electroformed Nickel and Copper

#### BONE ENGINEERING CORP.

SPECIAL WAVE GUIDE COMPONENTS  
ELECTRONICS

Charles M. Brown '42  
701 W. Broadway

CHapman 5-2638  
Glendale 4, Calif.

## UNITED

### GEOPHYSICAL COMPANY

SEISMIC & GRAVITY EXPLORATION SERVICE

595 East Colorado Street

Pasadena 1, Calif.

## ALUMNI FUND PROGRAM DISCUSSED BY CLASS REPRESENTATIVES

In line with the articles by Howard Lewis '23 in the June and November issues of *Engineering & Science* about the Alumni Fund Program, a meeting of class representatives was held at the Athenaeum on November 10. The purpose of this meeting was to familiarize class representatives with the general fund plans. In addition to the class representatives, President Lee A. DuBridge, James R. Page, president of the Board of Trustees, a few members of the faculty, and members of the Board of Directors and Officers of the Alumni Association attended the meeting. Allan Laws '26, past president, outlined the activities of the Alumni Association and discussed the methods of operation.

Joe Lewis '41, a member of the Alumni Fund Study Committee under the chairmanship of Howard Lewis, reviewed the development of the Alumni Fund program. At a meeting of the Board in April 1946, the President of the Association was requested to appoint a Fund Study Committee. A committee, consisting of Howard Lewis '23, chairman, Harold M. Huston '29, J. R. Joujon-Roche '28, J. W. Lewis '41, Earl Mendenhall '18, H. B. Holt '15 met several times and made extensive studies of Alumni Fund programs. This committee recommended to the Board of Directors that the Association establish a program for the purpose of raising funds for the benefit of the Institute. Joe outlined a program of organization, which included the establishment of a

directing committee consisting of one man from each of a group of classes to coordinate the activities of the class representatives. The program calls for the organization of class committees.

Herbert Holt '15 spoke briefly on the obligation of the Alumni to the Institute in view of the cost of education in relation to tuition paid. He referred to the work of the Institute Associates in contributing to the financial support of the Institute and expressed the belief that more alumni should contribute.

Harold Musselman commented briefly on the increasing need and urgency for gymnasium facilities. He pointed out that it is now practically impossible to secure a place for basketball. Professor R. W. Sorensen amplified Hal Musselman's comments on the needs of the Institute, and offered his full support.

President DuBridge expressed the great pleasure of the Institute in the program of the Alumni and particularly in the spontaneity of the Alumni in developing this program and offering it to the Institute rather than the Institute asking the Alumni to help. He stated that he had high hopes for a profitable cooperation between the Institute and the Alumni.

James R. Page spoke on the importance of assistance by the Alumni and firmly recommended that a definite goal be established and the program be set in motion without delay.

The classes were represented by the following men:

R. D. Andrews	1896-1915	R. C. Armstrong	1928	H. M. Worcester Jr.	1940
B. E. Chamberlain	1916	P. Cravitz	1929	S. E. Sohler	1941
J. P. Youtz	1917	C. E. Giebler	1930	R. M. Head	1942
E. R. Hoge	1918-1919	E. F. Green	1931	E. J. McCartney	1943
R. E. Woodbury	1920	H. W. Finney	1932	J. R. Borden	June 1944
R. J. Hare	1921	J. E. Meskell	1933	R. F. Mettler	October 1944
G. A. Alles	1922	L. F. Etter	1934	D. C. Tillman	1945
L. E. Blakeley	1923	A. A. Ray	1935	H. M. Comlossy Jr.	Feb. 1946
E. H. Gandy	1924	H. B. Dickinson	1936	H. R. Woods	June 1946
W. Hertenstein	1925	P. C. Schaffner	1937	M. Eimer	1947
J. E. Kinsey	1926	C. W. Clarke	1938	L. Mittenthal	1948
K. A. Belknap	1927	W. G. Lawson	1939		

The class representatives elected the following men to serve as a directing committee:

J. W. Lewis '41	Chairman	A. A. Ray '35	Classes of 1933 - 1940 Inclusive
G. A. Alles '22	Classes of 1896 - 1923 Inclusive	S. E. Sohler '41	Classes of 1941 - 1948 Inclusive
J. E. Kinsey '26	Classes of 1924 - 1932 Inclusive		

### PERSONALS

1918

NOEL A. PIKE is now with the Arizona Electric Coordinating Committee in Phoenix.

1922

KENNETH A. LEARNED, effective December 1, 1947, became the exchange outside plant engineer for the Southern California Area of the Pacific Telephone and Telegraph Company. For the past three years, Ken has been district engineer for the Alhambra Engineering District, which includes the Pasadena, Alhambra, Arcadia and El Monte Telephone Exchanges.

1925

THOMAS P. SIMPSON was among more than 40 members of the staff of the Research and Development Department of the Socony-Vacuum Oil Company, Inc., at Paulsboro, N. J., who participated November 17 in installation of a new Socony-Vacuum unit of the

Society of Sigma Xi, national organization for the encouragement of scientific research.

1927

THEODORE C. COMBS has been transferred to serve as resident manager for Timber Structures, Inc., in charge of the company's activities in the Southwest and Mexico. His office will be in San Francisco. Combs was formerly in the firm's home office in Portland, Oregon.

1931

AUBREY HORN has recently moved from South Pasadena to the vicinity of Cottage Grove, Oregon where Aubrey is chief engineer for the construction of the Dorena Dam.

1932

PATRICK B. LYONS, New Jersey, is now with Western Electric Co., Inc. as assistant superintendent in charge of sales, Hearing Aid Dept.

1933

ALBERT A. KOCH, engineering con-

sultant, is a faculty member at the New Mexico School of Mines.

1933

WILLIAM W. MOORE, president of Structural Engineers Association of Northern California, presided at the meeting of the annual convention of the Structural Engineers Association of California, which was held at Yosemite National Park in October.

1935

GALE M. SMITH, employee of American Telephone & Telegraph Co., New York assisted in a recent project of considerable interest which involved furnishing telephone service to passengers on the "Congressional Limited" and other crack trains of the Pennsylvania Railroad, and to passengers on the B & O Railroad's "Royal Blue". Speeding between New York and Washington at 90 miles per hour, passengers can place calls to any telephone in this country or abroad.

HARRY WILSON is with the A. C. Nielsen Co., which for the past 15 years