

PERSONALS

1914

VIRGIL F. MORSE is with the Aero Crafts Corporation in Los Angeles making tools for aircraft fabrication. He has one son, Robert, who is with the Navy at Pearl Harbor.

1920

DONALD D. SMITH and GEORGE O. SUMAN, who were close friends during their years at Tech, attended the wedding on April 22 of Mr. Smith's daughter, Aileen, to Mr. Suman's nephew, John Sparling. The bride is a sophomore at Pomona College and the groom is a cadet with the Army Air Corps at Santa Ana. The wedding was at the North Hollywood home of Mr. Smith.

1922

JOHN E. SHIELD is a major and has returned to the United States from overseas duty.

1924

MAX W. MOODY is a commander in the supply section of the Navy.

W. LAWRENCE HALL is a lieutenant colonel in the Coast Artillery Corps, now commanding a searchlight battalion recently stationed in the Los Angeles defense area.

1925

MICHAEL BRUNNER is a lieutenant colonel stationed at Fort Belvoir.

1926

ORRIN H. BARNES is now a major. LIEUTENANT COLONEL JOE MATSON, Jr., of the Engineer Corps, visited

the campus recently while on leave. Prior to the war he was engineer for a sugar plantation in Hawaii. He is married and has three children.

WILLIAM S. KINGSBURY, Jr., has been in England with the Army Engineer Corps since July, 1943. He took his basic training at Camp Claiborne, La., and is now a staff officer and plans and operations officer for his regiment.

1927

JAMES BOYD is now a colonel and is in Washington, D.C.

V. WAYNE RODGERS is a major in the Corps of Engineers, Washington, D.C.

BORICE Z. BORIS has been transferred from the position of chief electrical engineer of the San Diego Division of Consolidated Vultee Aircraft to the post of plant engineer of the new Consolidated Vultee Aircraft manufacturing plant at New Orleans. This plant is one of the largest in the deep south and is engaged in the manufacture of "Catalina" patrol planes, which have made a name for themselves in all theaters of operation. Mr. and Mrs. Boris live in one of the new housing projects and find the houses quite satisfactory.

1928

JULIEN PHILLIPS, ex-'28, is still employed as chemical engineer in the research department of the American Potash and Chemical Corporation at Trona. He has one daughter one and one-half years old.

KENNETH M. FENWICK is a lieutenant commander in the Navy.

1929

LIEUTENANT COLONEL BILL MOHR is now at Camp Van Dorn, Miss.

DR. DUANE E. ROLLER is now in charge of the physics department at Wabash College, Crawfordsville, Ind.

ALBERT E. MYERS is living in Berkeley and is employed at the San Francisco office of Shell Oil Company. On January 18 his second daughter, Caroline, was born, weighing nine pounds 10 ounces.

H. M. O'HAVER is the division sales supervisor, eastern division, of the Southern California Gas Company, and is living at San Bernardino. He has a daughter, Sharon, seven, and a son, Michael, four.

1930

MAJOR ROBERT H. BUNGAY has been transferred from the Signal Corps to the Engineer Corps and has been assigned to a project in British Columbia.

ROSCOE P. DOWNS has been at the Muroc Air Base while employed by the firm building a concrete runway at the Base.

1931

CAPTAIN CHARLES K. LEWIS has been active in the Italian invasion.

MYER S. STEIN has been a tooling engineer for Douglas Aircraft Co., Inc., since April, 1943. He is married and has one child two years old.

LAVERNE D. LEEPER has graduated from Officers Candidate School at Fort Belvoir, Va., and is now a second lieutenant assigned to Camp Claiborne, La. He was recently married.

WINTON C. HOCH is a lieutenant in the Navy, located at Washington, D.C. He recently visited the Muroc Air Base.

LUCAS A. ALDEN was married on March 8 to Rita Coté of Bethesda, Md. They are living in Washington, D.C.

1932

WORRELL F. PRUDEN is now assistant manager of the naval ordnance division at the Maywood plant of Consolidated Steel, where five-inch Twin Mounts for the Navy Department are being built. It is a strictly mechanical job, somewhat out of his original line, but work that he finds very interesting.

LIEUTENANT WILLIAM J. THOMAS is an engineering officer in the Navy.

JOHN H. A. BRAHTZ is a lieutenant commander.

MAJOR STUART L. SEYMOUR is at the Muroc Air Base.

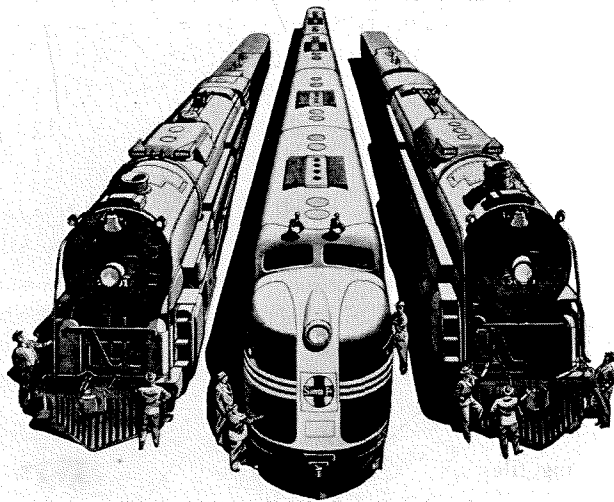
1933

ART MATHEWSON, formerly a staff engineer at Lockheed, is now a lieutenant (j.g.) stationed at San Diego.

LIEUTENANT PHILLIP H. CRAIG, former football captain at Tech and a three letter man, is now a flier for the Navy in the South Pacific. His wife lives in Alhambra.

GROVER SECORD recently returned from the South Pacific rubber survey for the Naval Bureau of Aeronautics.

JOHNNY SHARP, ex-'33, is now back in the United States after having spent a year in London with Douglas Aircraft Co., Inc.



NEW STEEL BEAUTIES ON THE SANTA FE

★ There isn't yet the ceremony in taking delivery of a new locomotive that there is in christening a ship.
★ But, just the same, it's a great occasion on the Santa Fe when we receive those high-speed, super-powered locomotives so badly needed these days.
★ For every new one means "rolling" more and longer



freight trains loaded with material of war and more trains operated for the increasing troop movements.
★ The three locomotives, Diesel and steam, illustrated above, are among the very first to be delivered of the big fleet of powerful locomotives lately ordered by the Santa Fe Railway.
— AND MORE ARE COMING

Santa Fe System Lines

ONE OF AMERICA'S RAILROADS — ALL UNITED FOR VICTORY

1934

LIEUTENANT COLONEL JOHN D. HARSHBERGER, U.S.M.C., is a flier in the South Pacific. His wife and baby daughter are living at Laguna Beach, Calif.

LEE P. MORRIS, a lieutenant in the Navy, has seen considerable action.

ED DOLL has done some work on the Muroc Air Base. Since the start of the war he has traveled about 50,000 miles.

1935

J. H. WAYLAND spent a year in Washington on war research work at the Naval Ordnance Laboratory, was attached to the Navy Degaussing Station at San Pedro as District Degaussing Consultant until January, 1944, and is now engaged in war work at the Institute.

EUGENE C. MILLER was a victim of the American Air Lines crash on February 10 near Memphis, Tenn. At the time of his death he was chief estimator for Consolidated Steel Corporation, Ltd., Wilmington, Calif., and was on his way to Washington, D.C., on business.

ARTHUR ENGELDER is a captain in the Medical Corps of the 354th Infantry at Camp Roberts, Calif. He entered the service in June, 1942.

ROBERT P. JONES is a lieutenant (j.g.) in the Navy and has been stationed in Washington, D.C.

JOHN R. ROSSUM is the sanitary engineer of the California Water Service, San Jose, Calif.

1936

WILSON H. BUCKNELL is an engineer with O'Keefe and Merritt Company.

HAROLD J. ALWART is with Clayton-Mark and Company, Evanston, Ill. He has an eight-months-old daughter, Sharon Jo.

LIEUTENANT (j.g.) RAYMOND H. F. BOOTHE is with the Seabees Maintenance Unit, New Guinea, as the executive officer of the unit.

SAMUEL C. EASTMAN, executive partner of Dozier-Graham-Eastman, recently completed an extended survey trip throughout the central and eastern United States compiling information for use in certain production processes of the war program. Manufacturing centers visited on the six-week survey included Chicago, Detroit, Cleveland, and New York. A considerable period of time was also spent working with various government agencies in Washington, D.C. While making the trip, considerable data were also gathered on post-war industrial trends which will be of value in guiding merchandising programs of western industries through the reconversion period to peacetime activities.

LUTHER P. SPALDING is employed by North American Aviation, Inc., and recently went to the east on a business trip.

VICTOR V. VEYSEY is the father of a son, John Charles, born March 26.

1937

JOE MAUK SMITH received his Ph.D. degree in chemical engineering from the Massachusetts Institute of Technology in May, 1943. He is now an assistant professor of chemical engineering at the University of Maryland, and is also doing government research work at the Bureau of Mines located at the university. He was married on December 23, 1943, to Miss Essie McCutcheon of Frederick, Md.

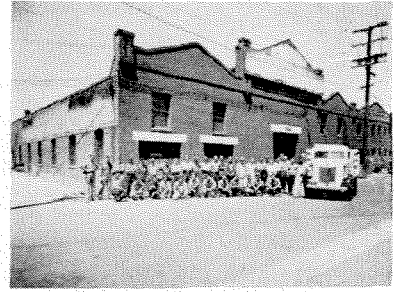
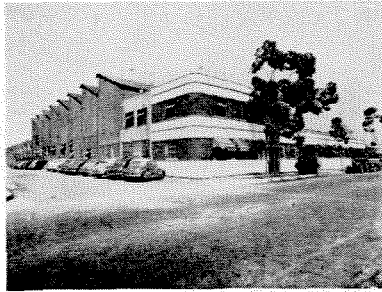
V. TULAGIN is employed by General Aniline and Film, Easton, Pa.

1938

JOHN L. MERRIAM is in charge of the soil conservation service office cooperating

The KINNEY GROUP

1800 Men serving their old customers -- welcoming new



KINNEY IRON WORKS

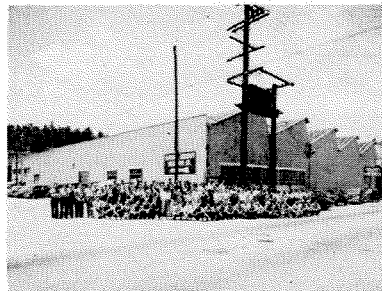
Meehanite Metal and Grey Iron Castings—1 ounce to 30 tons. One of the largest and most modern foundries on the Pacific Coast. Meehanite castings are made in the following processes — General Engineering Meehanite (including pressure resisting), Chemical Resisting Meehanite, Wear Resisting Meehanite, and Heat Resisting Meehanite

2525 EAST 49TH STREET
LOS ANGELES

KINNEY ALUMINUM CO.

"A superbly equipped foundry," says one of our customers. Aluminum Alloy, Magnesium and Permanent Mold castings; quality controlled in our own X-Ray, Chemical and Physical Laboratories; heat treated by the most modern furnaces. Our own shop for manufacturing permanent molds assures deliveries according to schedule.

5950 SOUTH BOYLE AVE.
LOS ANGELES



NATIONAL AIRCRAFT EQUIPMENT CO.

Over 400 employees specializing in production machine work, dies, jigs and fixtures; adequately housed in a plant covering an entire block. An organization capable of undertaking many types of manufacturing problems. Hydraulic presses, large planers and large milling machines permit work of all sizes.

275 NORTH AVENUE 19
LOS ANGELES

VERNON PATTERN WORKS

A plant devoted exclusively to wood and metal patterns. The first step in a service of "From blueprint to final product." A jobbing pattern shop which assures the pattern being entirely acceptable to the foundry and delivered when promised. You are invited to inspect the work and equipment of this plant at any time.

2323 EAST 27TH STREET
LOS ANGELES



SOUTH OF THE BORDER, TOO our war trains roll

Important factors in the wartime teamwork of Mexico and the United States are the railroads linking our two countries . . . Southern Pacific in the United States, Sud Pacifico de Mexico, and the National Railways of Mexico . . .

Sud Pacifico de Mexico, as you may know, is S.P.'s scenic and interesting West Coast of Mexico route. Ours is the only United States railroad with a line in Mexico.

Crossing the border at Nogales, Arizona, this 1100-mile route runs south through the cactus forests of Sonora and rich agricultural regions . . . touches at the tropic seaports of Guaymas and Mazatlan . . . climbs into the wild *Barrancas* (gorges) where breath-taking vistas are revealed at every turn.

The People of Mexico, like ourselves, are very busy now . . .

Lovely Michoacan is furnishing resin and turpentine. Gulf waters off Guaymas, Topolobampo and Mazatlan, famed for marlin and sailfish, yield vitamin-rich shark oil.

Mercury, silver and tungsten come from Taxco. Manganese from Jalisco, Durango and Chihuahua. Mahogany and balsa woods from Tehuantepec. Henequin fiber for rope from Yucatan peninsula.

Acapulco sends us bananas, limes and coconuts. We receive coffee from Orizaba and Cordoba, and cattle, tomatoes, garbanzos from Mexico's fertile west coast.

From Guadalajara, southern terminus of *Sud Pacifico de Mexico*, Mexico City is an overnight trip via the National Railways of Mexico. The National Railways are also linked with our lines at El Paso, and at other border points served by S.P.'s Sunset and Golden State routes.

We cannot ask you to travel now, because of our great war load. But when peace comes again we hope you'll come with us to visit or re-visit Mexico.

S·P

The friendly Southern Pacific

with the Yucaipa Valley Soil Conservation District. He and MARTIN J. POGGI, '37, have bought an 11 acre farm and a cow. Last fall John fell from a ladder while working on the house and fractured two vertebrae, but is now recovered. He has been reclassified in Civil Service from assistant civil engineer to assistant soil conservationist but still does some engineering.

SAMUEL H. KELLER is a lieutenant (j.g.) and on duty in the South Pacific area. He enlisted two years ago.

1939

PAUL O. ENGELDER was promoted from captain to major in the U.S. Marine Corps. He is attached to the headquarters staff at Washington, D.C.

FREDERICK C. HOFF has been assigned to the production staff of the Naval Ammunition Depot, Hastings, Nebr.

ALEX M. SHIELDS, ex-'39, is with the Merchant Marine.

LIEUTENANT CHARLES CARSTARPHEN, U.S.N.R., has been at the Puget Sound Navy Yard but is now in Hawaii.

ROBERT W. WINCHELL is a major at Bradley Beach, N.J.

1940

ROBERT B. MEYER is in charge of process engineering at Bendix Aviation, Pacific division. He has a son, Billy, two and a half years old, and a daughter, Irene, one year old.

CAPTAIN GILBERT VAN DYKE is now with the regional weather control in Great Falls, Mont. He was sent to Alaska in September, 1942, returning in February of this year, when he saw for the first time his 13-months-old son.

DWIGHT H. BENNETT is the father of a baby girl born in February. He is employed by the Consolidated-Vultee Aircraft Corporation in San Diego.

DONALD E. LOEFFLER is photographic officer at the Palm Springs Army Air Field.

1941

PAUL R. FREEHAFFER died suddenly on March 25 while visiting his sister in Payette, Idaho. He was employed as a research chemist with an engineering corporation in Los Angeles.

CHARLES T. HIGHT has been overseas for the past two years. Until March he had been in meteorology work in North Africa.

LIEUTENANT GLYN FRANK-JONES is with the Royal Navy Volunteer Reserve Special Branch.

1942

E. J. GENTLE was recently promoted from senior design engineer to special projects production engineer at Lockheed "B."

ENSIGN WARREN GILLETTE recently qualified as a full fledged Submariner and was awarded his Dolphins. He is in the Atlantic theater.

THOMAS D. ELLIOTT is now an ensign in the Navy, stationed in the Pacific, and would enjoy hearing from his friends. He has a five-months-old son, Thomas, Jr.

1943

LIEUTENANT CLAUDE CARTER received his commission in January after completing his training program at Yale, and he has been assigned as an engineering officer to an Army bombing squadron now training in Kansas.

ENSIGN GEORGE GRIFFITH and **ENSIGN BILL HALPENNY** reported for engineering instruction at the University of Arizona after their graduation from Caltech, and they are now inspectors with the supervisor of shipbuilding at the Brown Shipbuilding Yard at Houston, Texas.

RONALD RAU and Miss Maryjane Uhrlaub, niece of Stuart Mackeown, recently announced their engagement. He is engaged in war work at the Institute.